

● Evolution Towards True Value ●



Safety Compact Functional



■ General Specifications

Model		IC75-5	IC100-5
Payload		7,500kg	10,000kg
Operating weight		9,760kg	11,570kg
Travel Speed	Low	0~ 8.0km/h	0~ 8.0km/h
	High	0~12.0km/h	0~12.0km/h
Engine	Model	KUBOTA V5009	CUMMINS QSB6.7
	Emissions Cert.	EU: Stage V EPA: Teir4 final	EU: Stage V EPA: Teir4 final
	Rated Output	140kw/2,200min <sup>-1</sup> (190.3ps/2,200rpm)	191kw/2,000min <sup>-1</sup> (260ps/2,000rpm)
	Total Displacement	5.0L	6.7L
Type		Direct-Injection Turbo	Direct-Injection Turbo
Fuel Tank		312L	312L
DEF Tank		40L	46.3L
Minimum Ground Clearance		560mm	580mm
Ground Pressure	Unloaded	21.9kPa(0.22kgf/cm <sup>2</sup> )	28.1kPa(0.28kgf/cm <sup>2</sup> )
	Loaded	38.5kPa(0.39kgf/cm <sup>2</sup> )	52.3kPa(0.53kgf/cm <sup>2</sup> )
Vessel Capacity	Heaped	4.3m <sup>3</sup>	5.6m <sup>3</sup>
	Struck	2.68m <sup>3</sup>	4.0m <sup>3</sup>
Standard Vessel		Ship bottom with rear gate	Ship bottom with rear gate
Transmission		HST	HST
Speed Change System		2-Speed Travel Motor	2-Speed Travel Motor
Control System		Electric type	Electric type
HST Set Pressure		40.0MPa(408kgf/cm <sup>2</sup> )	40.0MPa(408kgf/cm <sup>2</sup> )

Web site  
kato-works.co.jp



YouTube / KATO WORKS OFFICIAL  
youtube.com/user/katowork



Instagram  
instagram.com/kato\_works\_official/



- Before you operate the machine, study the instruction manual thoroughly and follow the instructions it contains.
- Some differences may arise between the machine delivered and the photographs in the catalog due to any added improvements.
- Note: The specification may be changed without notice.
- The actual colors of the body and interior may appear slightly different from those shown in this catalog due to the limitation of photography and printing.

● Contact for enquiry:

**KATO** **KATO WORKS CO.,LTD.**  
 9-37, Higashi-ohi 1-chome, Shinagawa-ku, Tokyo, 140-0011, Japan  
 Tel.: Head Office: Tokyo +81 (0)3 3458-1111  
 Overseas Marketing Department: Tokyo +81 (0)3 3458-1115 / FAX: Tokyo +81 (0)3 3458-1163  
 http://www.kato-works.co.jp

QUALITY & EXPERIENCE  
SINCE 1895

IC SERIES CRAWLER CARRIER

ic75-5  
ic100-5



**KATO**

# Satisfy customers

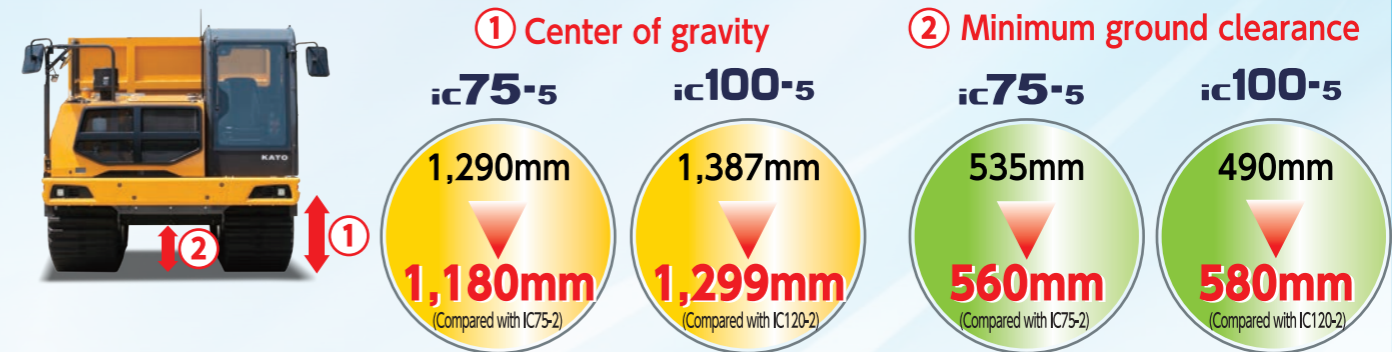


## Safe and High Performance New Generation KATO Crawler Carrier



### Excellent Stability

The low center gravity design reduces the roll-over risk and perform the safe traveling on a slope.



**NEW**

### New ROPS compliant cabin

The new ROPS cabin is compliant with ISO3471. It protects operator from roll-over accident.



### Rear and Side Camera

Operator is able to confirm the rear and the side view through cameras. Rear light is also available as option.

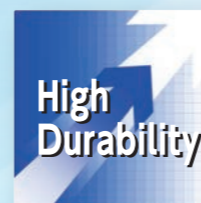


### EU StageV/Teir4 final compliant environment friendly engine

■ IC75-5  
Model...Kubota V5009  
Total Displacement...5.0L  
Rated Output...140kW/2,200min<sup>-1</sup>  
Maximum Torque...811N.m/1,500min<sup>-1</sup>



■ IC100-5  
Model...Cummins QSB6.7  
Total Displacement...6.7L  
Rated Output...191kW/2,000min<sup>-1</sup>  
Maximum Torque...1,288N.m/1,500min<sup>-1</sup>



### Traveling speed limit function at vessel dumping

This function limits the traveling speed to 50% when the vessel has not been completely retracted. When the vessel has sensed the impact, it provides additional speed limit. This speed limit reduces the damage and enhance the lifetime.

### Wear resistant steel vessel

It applies lightweight high wear resistance vessel and reduces damage against vessel.



**Best Comfort**

**Wider view and ergonomic new cab**



▲ Switches have on overhead



▲ USB port



▲ Color display for cameras



**Openable left window**

In addition to the right side window, left side has become openable.



**New operator seat**

The new 2-step slide and low height seat is available. The joystick lever unit is also adjustable and operator is able to select optimum operating position.



**Air Conditioner**

It has been relocated to the optimum position.



**Assist grip and Footrest**

It supports comfortable traveling on off road.



**NEW**

**Overload prevention alert**

Operator is able to set maximum load limit in advance and the horn alerts when the overload is caused. It helps to prevent the overload accident.



▲ Display at weighing

**operability**

**Electronic control joystick lever for comfortable operation**

**Smooth traveling and operator friendly**

The new electronic hydraulic control system controls discharge amount of the hydraulic oil according to the operation load. It shifts the gear automatically therefore no need to consider engine stroll and additional operation.

**Low fuel consumption**

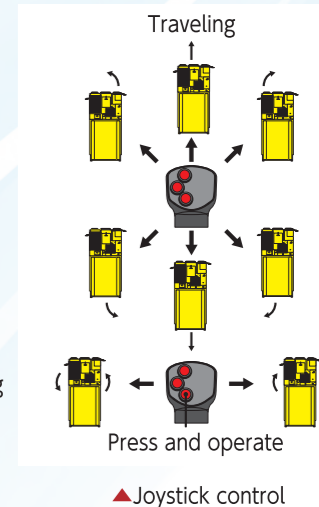
When the lever is at the neutral position, it turns to idling mode and saves the fuel consumption.

**Easy operation**

All controls, traveling, engine on/off, horn and vessel dumping are completed on joystick lever. It enable operator to do all traveling operation without further motion.



▲ Switches have been gathered



**Maintenance**

**Large size openable engine cover**

It provides easy and smooth access to the engine.

**Air pre filter is standard**



**DEF tank**

(IC75-5: gauge/IC100-5 white tank)

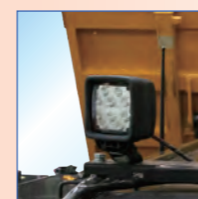


The amount of DEF could be confirm visually.

**Openable front cover**

Easy to clean and easy to maintain.

**Features**



▲ LED working light (option)



▲ Vessel safety locking bar

*Progressive Parts*



▼ Handrail



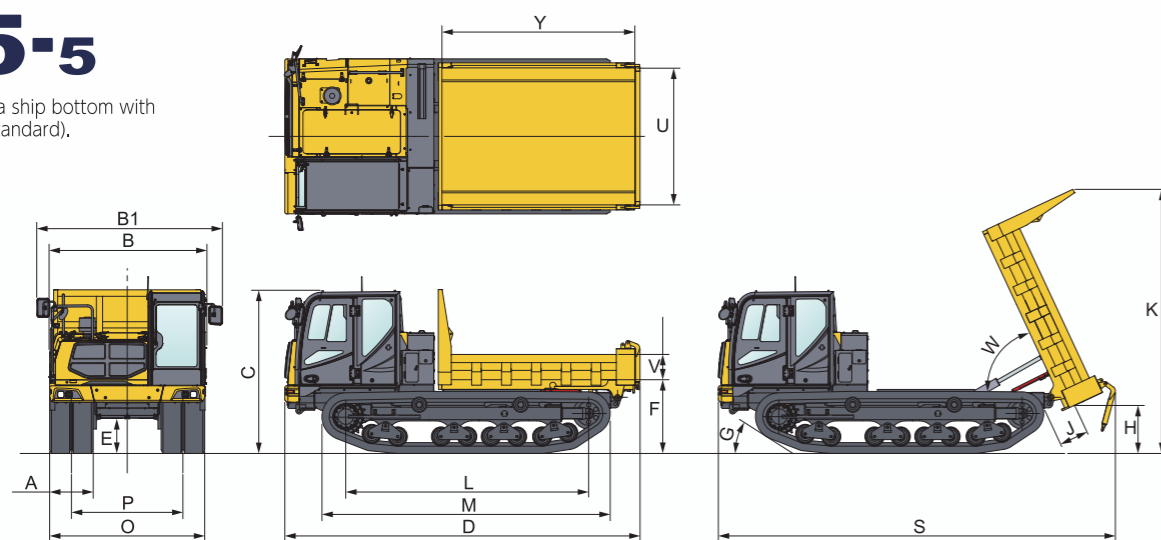
▲ LED head light



▲ Vessel clearance detect sensor

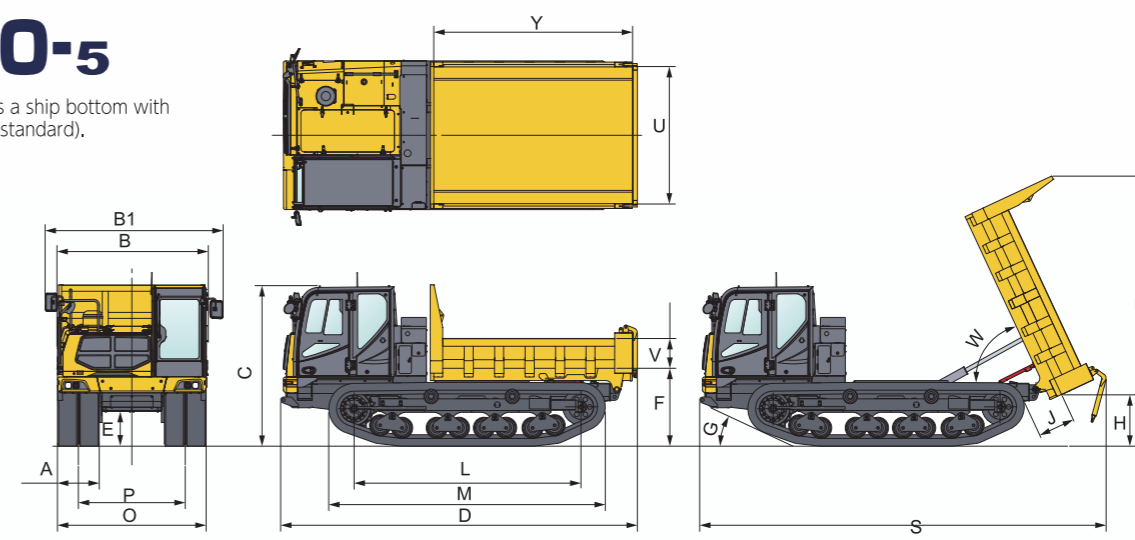
## ic75-5

※The drawing is a ship bottom with rear opening (standard).



## ic100-5

※The drawing is a ship bottom with rear opening (standard).



### Dimensions

Vessel Specifications		Ship bottom with rear gate	Scoop end	Flat floor with 3gate
B	Width of upper machine	without side view mirror	2,540mm	2,540mm
B1		with side view mirror	2,980mm	2,980mm
C	Overall Height		2,620mm	2,620mm
D	Overall Length		5,700mm	5,640mm
E	Minimum ground clearance		560mm	560mm
F	Body height		1,180mm	1,180mm
Y	Body inside dimension	Length	3,100mm	3,100mm
U		Width	2,200mm	2,200mm
V		Height	410mm	460mm
G	Approach Angle		32.5°	32.5°

### Crawler

L	Tumbler Center Distance	3,900mm
M	Crawler Overall Length	4,630mm
O	Crawler Overall Width	2,490mm
P	Distance of Crawler Centers	1,790mm
A	Shoe Width	700mm

Crawler Shoe Pitch	100mm
Crawler Shoe Number	98×2

### Dumping

S	Overall Length	6,380mm	6,090mm	6,380mm
K	Overall Height	4,240mm	4,240mm	4,240mm
H	Body floor height from ground at body raised	770mm	840mm	770mm
J	Clearance between Vessel and Crawler Shoe	470mm	650mm	470mm
W	Dumping angle	65°	65°	65°

Payload		7,500kg	7,500kg	7,000kg
Vessel Capacity (m³)JIS	Heaped	4.3m³	4.2m³	4.0m³
	Struck	2.68m³	2.8m³	2.39m³

### Standard equipment

- 700mm width rubber crawler shoe
- Room light
- Color display
- Joystick lever
- LED Front light
- Side/rear view monitor
- Ship bottom with rear gate
- Cab(ROPS)
- Air conditioner
- Body: grip switch
- Floor mat
- Load weighing function
- USB(5V power supply)socket
- Heater
- Horn,Back buzzer
- Suspension seat with seat belt
- Dump count function

### Optional

- Scoop end
- Flat floor with 3gate
- Radio
- Pedal
- LED Working light
- LED Rear light

### Dimensions

Vessel Specifications		Ship bottom with rear gate	Scoop end
B	Width of upper machine	without side view mirror	2,540mm
B1		with side view mirror	2,980mm
C	Overall Height		2,690mm
D	Overall Length		5,980mm
E	Minimum ground clearance		580mm
F	Body height		1,310mm
Y	Body inside dimension	Length	3,330mm
U		Width	2,290mm
V		Height	500mm
G	Approach Angle		25°

### Crawler

L	Tumbler Center Distance	3,800mm
M	Crawler Overall Length	4,630mm
O	Crawler Overall Width	2,490mm
P	Distance of Crawler Centers	1,790mm
A	Shoe Width	700mm

Crawler Shoe Pitch	150mm
Crawler Shoe Number	66×2

### Dumping

S	Overall Length	6,810mm	6,550mm
K	Overall Height	4,520mm	4,520mm
H	Body floor height from ground at body raised	860mm	930mm
J	Clearance between Vessel and Crawler Shoe	620mm	800mm
W	Dumping angle	65°	65°

Payload		10,000kg	10,000kg
Vessel Capacity (m³)JIS	Heaped	5.6m³	5.6m³
	Struck	3.7m³	4.1m³

### Standard equipment

- 700mm width rubber crawler shoe
- Room light
- Color display
- Joystick lever
- LED Front light
- Side/rear view monitor
- Ship bottom with rear gate
- Cab(ROPS)
- Air conditioner
- Body: grip switch
- Floor mat
- Load weighing function
- USB(5V power supply)socket
- Heater
- Horn,Back buzzer
- Suspension seat with seat belt
- Dump count function

### Optional

- Scoop end
- Radio
- Pedal
- LED Working light
- LED Rear light