

CCH2500

Lifting Capacity : 250t

FULLY HYDRAULIC CRAWLER CRANE

CONTENTS

CRANE

●Dimensions / Specifications	1
●Working Ranges Diagram	2
●Boom And Jib Combination	3
●Attachment Arrangement	3·4·5
●Standard Boom Rated Lifting Loads	6
●Aux. Jib Rated Lifting Loads	7
●Light Boom Rated Lifting Loads	8
●Aux. Jib Rated Lifting Loads	8
●Crane Jib Rated Lifting Loads	
Boom Length 45~54m	9
Boom Length 57~66m	10
Boom Length 69~72m	11

LUFFING TOWER CRANE

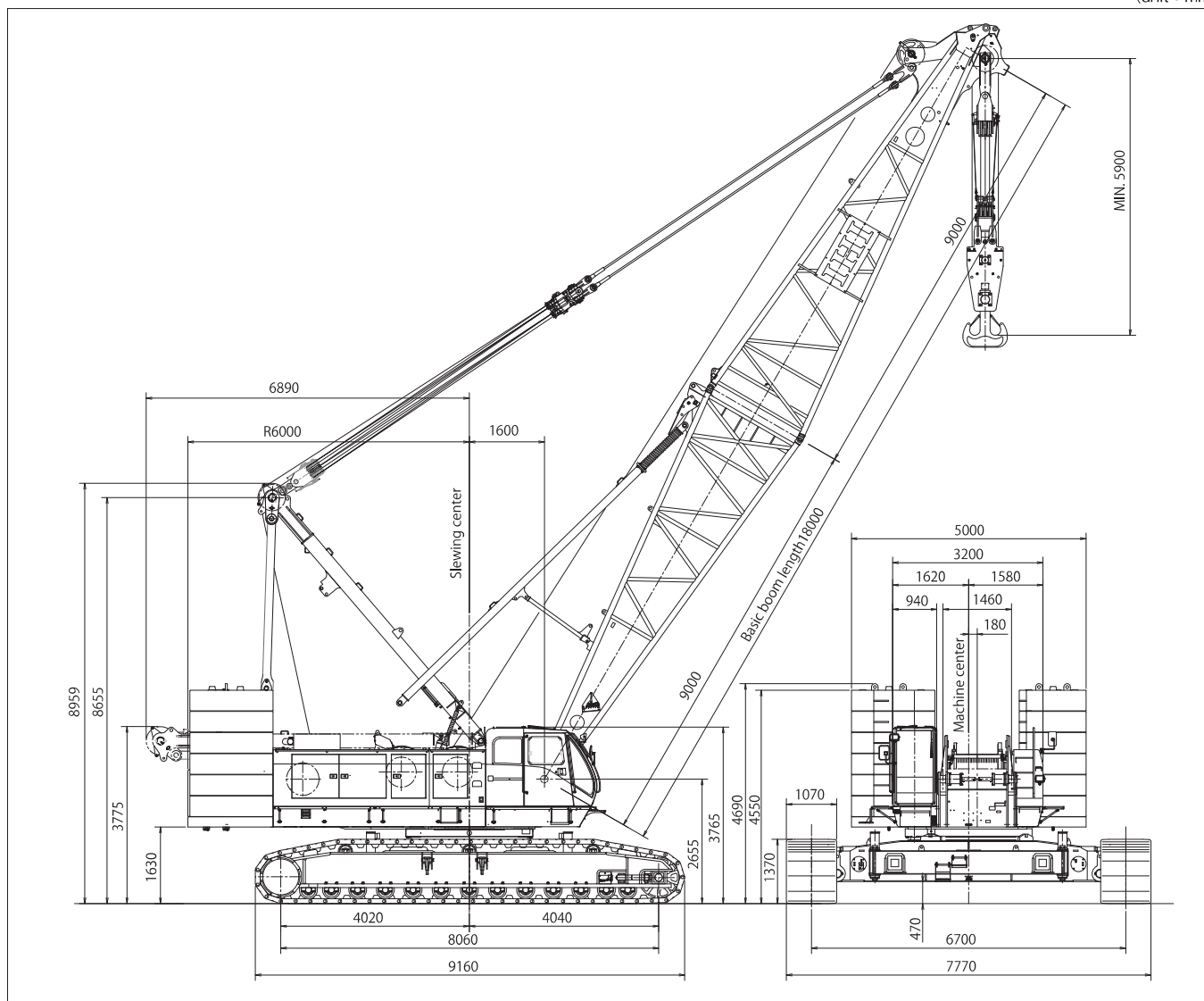
●Dimensions / Specifications	12
●Working Ranges Diagram	13
●Tower Boom and Jib Combination	14
●Attachment Arrangement	15
●Tower Crane Rated Lifting Loads	
Tower Boom Length 38.0m, 41.0m	16
Tower Boom Length 44.0m, 47.0m	17
Tower Boom Length 50.0m, 53.0m	18
Tower Boom Length 56.0m	19
Tower Boom Length 59.0m	20
Tower Boom Length 62.0m	21

CLAMSHELL SPECIFICATION

●Dimensions / Specifications	22
●Working Ranges Diagram	23
●Clamshell Bucket Specification	24
◆Standard Equipment / Optional Specifications	25
◆Transport Dimensions and Weight	26·27·28·29
◆Lubricating Oil List	29
◆Painting / Remarks	29

Dimensions / Specifications

(unit : mm)



CCH2500 Main Specifications

PERFORMANCE		
Slewing speed	1.5min ⁻¹ (constant speed 0.6min ⁻¹)	
Travel speed	※ 0.9/0.6 km/h	
Gradeability	30% (16.7°)	
Engine	Manufacturer	Cummins Inc.
	Model	QSL9-3A
	Emission Certification	U.S.EPA Tier3,CARB Tier3,EU Stare III A
	Type	4-cycle, water-cooled, turbocharged and air cooled
	Rated output	242kW/2000min ⁻¹
	Total displacement	8.9 L
	Fuel tank capacity	510 L
	Battery	12V × 120AH 2pcs.

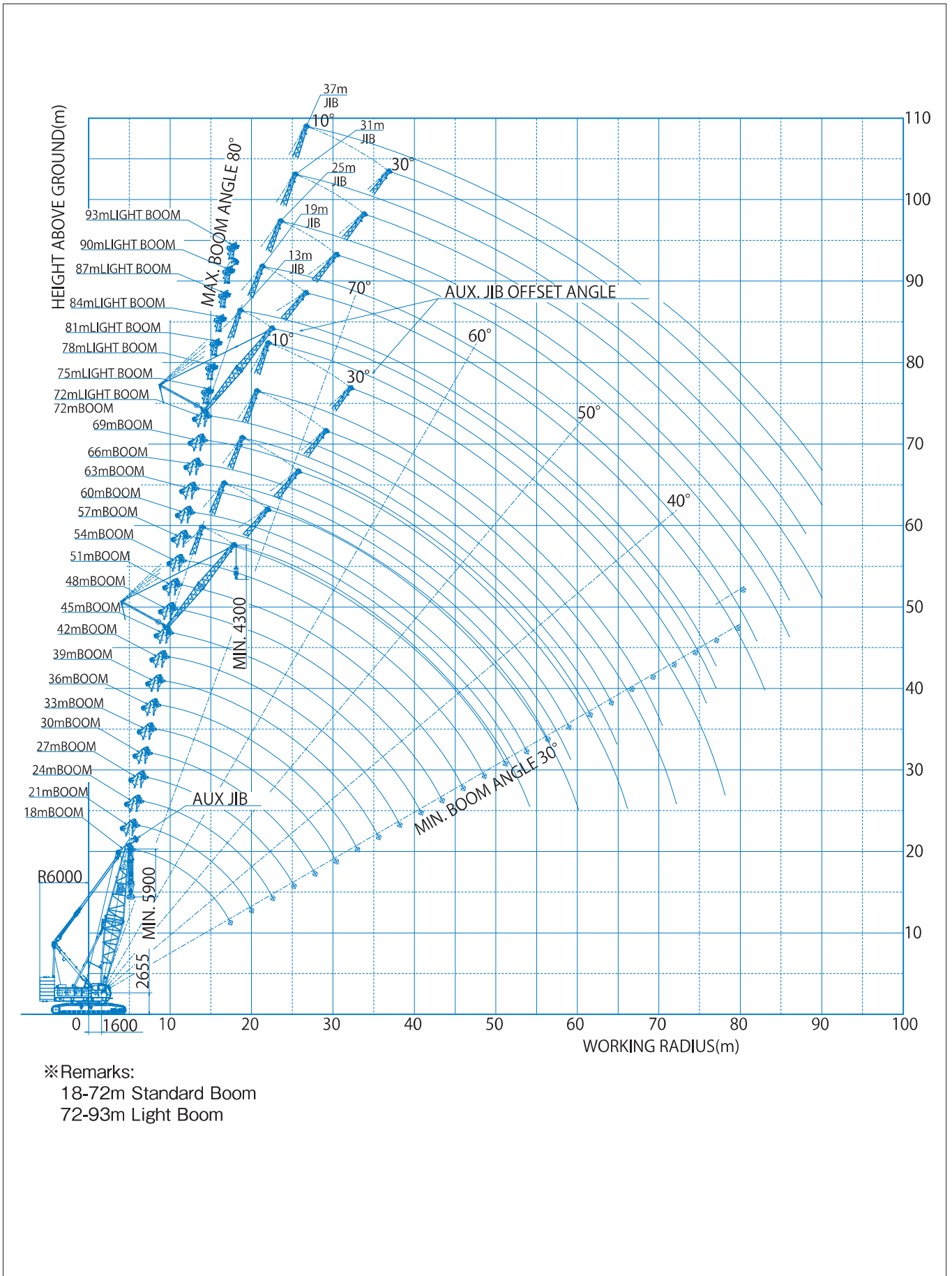
Crane Specifications

PERFORMANCE		
Maximum lifting capacity × working radius	250ton × 5.2m	
Standard boom length	18~72m	
Light boom length	72~93m	
Maximum boom length with Jib boom	109m (72m standard boom + 37m jib boom)	
Rope speed	hoisting/lowering	※ 120m/min
	Boom hoisting/lowering	※ 34m/min × 2
Rope part lines	250t/135t combination hook	16 part lines / 10 part line <small>(Additional boom point sheave-block is necessary to use over 11 part lines)</small>
	13.5t hook	1 part line
	Boom hoist	20 part lines
Standard counterweight	92.0 ton	
Carbody weight	19.0 ton	
Crane total weight	Approx. 210 ton (with 18 m boom) & 200t hook	
Average ground bearing pressure	113 kPa (1.15 kgf/cm ²)	
Line pull	Max. line pull	242kN
	Rated line pull	132kN

※ The value marked with “※” will be changed according to the loads given

CRANE

Working Ranges Diagram



Boom And Jib Combination

Boom And Jib Combination

Jib Length (m)	Boom And Jib Combination (m)																		
	18	21	24	27	30	33	36	39	42	45	48	51	54	57	60	63	66	69	72
Aux.	○	○	○	○	○	○	○	○	○	○	○	○	○	○	○	○	○	○	○
13										○	○	○	○	○	○	○	○	○	○
19										○	○	○	○	○	○	○	○	○	○
25										○	○	○	○	○	○	○	○	○	○
31										○	○	○	○	○	○	○	○	○	○
37										○	○	○	○	○	○	○	○	○	○

Jib Length (m)	Light boom length (m)							
	72	75	78	81	84	87	90	93
Aux.	○	○	○	○	○	○	○	○

Wire Rope

Purpose	Rope dia (mm)	Breaking Strength (kN)	Rope Type
Load hoisting *1	φ 28	688	P·S (19) +39×P·7
Load hoisting *2	φ 28	755	P·S (19) +39×P·7
Load hoisting *3	φ 28	674	IWRC 6×P·WS (36)
Boom hoisting	φ 22.4	356	IWRC 6×WS (31)
Boom suspension	φ 36	1150	IWRC 6×P·WS (36)
Jib load hoisting	φ 28	688	P·S (19) +39×P·7
Jib boom suspension	φ 28	585	IWRC 6×Fi (29)
Jib strut suspension	φ 34	1020	IWRC 6×P·WS (36)

Note: Designed and rated to comply with EN13000 Option Wire Ropes

*1: Use wire rope for max 200t loads or below.

*2: Use wire rope for max 235t loads or below.

*3: Use wire rope for over 235t loads

Max. lifting capacity by reeving

(unit: ton)

Part line	1	2	3	4	5	6	7	8	9	10	11	12	13	14	15	16
250t	-	-	-	-	-	-	-	-	-	-	148.5	162.0	175.5	189.0	202.5	250.0
200t	-	-	-	-	-	-	-	-	-	-	148.5	162.0	175.5	189.0	200.0	200.0
135t	13.5	27.0	40.5	54.0	67.5	81.0	94.5	108.0	121.5	135.0	-	-	-	-	-	-
125t	13.5	27.0	40.5	54.0	67.5	81.0	94.5	108.0	121.5	125.0	-	-	-	-	-	-
90t	13.5	27.0	40.5	54.0	67.5	81.0	90	-	-	-	-	-	-	-	-	-
60t	13.5	27.0	40.5	54.0	60	60	-	-	-	-	-	-	-	-	-	-
35t	13.5	27.0	35.0	-	-	-	-	-	-	-	-	-	-	-	-	-
13.5t	13.5	-	-	-	-	-	-	-	-	-	-	-	-	-	-	-

Attachment Arrangement

As for the case with two kinds of methods, the combination of the upper section is recommended boom constitution.

Crane boom arrangement

Boom length (m)	Standard boom arrangement
18	
21	
24	
27	
30	

※○mark : Normal guide-roller position

☆mark : Additional guide-roller position

CRANE

Attachment Arrangement

As for the case with two kinds of methods, the combination of the upper section is recommended boom constitution.

Crane boom arrangement

Boom length (m)	Standard boom arrangement
33	
36	
39	
42	
45	
48	
51	
54	
57	
60	
63	
66	
69	
72	

※○mark : Normal guide-roller position ☆mark : Additional guide-roller position

Attachment Arrangement

As for the case with two kinds of methods, the combination of the upper section is recommended boom constitution.

Crane boom arrangement

Boom length (m)	Light boom arrangement
72	
75	
78	
81	
84	
87	
90	
93	

※○mark : Normal guide-roller position ☆mark : Additional guide-roller position

Crane jib arrangement (with standard boom combination only)

Jib Length (m)	Jib arrangement
13	
19	
25	
31	
37	

CRANE

STANDARD BOOM RATED LIFTING LOADS (92.0t Counterweight + 19.0t Carbody weight)

(unit : ton)

Boomlength(m)	18.0		21.0		24.0		27.0		30.0		33.0		36.0		39.0		42.0		
	Load	Angle	Load	Angle	Load	Angle	Load	Angle	Load	Angle	Load	Angle	Load	Angle	Load	Angle	Load	Angle	
5.0	5.2m×25.9	80.0	5.7m×20.5	80.0															
6.0	192.0	77.3	192.0	79.2	6.2m×183.0	80.0	5.7m×175.0	80.0											
7.0	166.2	74.0	166.0	76.4	166.0	78.1	165.5	79.4	7.3m×155.5	80.0	7.8m×144.2	80.0							
8.0	146.2	70.6	146.0	73.5	145.8	75.6	145.6	77.3	145.5	78.6	142.1	79.6	8.3m×135.0	80.0	8.8m×125.0	80.0			
9.0	130.8	67.2	130.4	70.6	130.2	73.1	129.9	75.1	127.5	76.6	128.0	77.8	126.0	78.9	122.6	79.7	9.3m×112.5	80.0	
10.0	119.6	63.7	118.2	67.7	117.8	70.6	117.2	72.9	115.5	74.6	115.0	76.1	114.5	77.2	112.6	78.2	107.2	79.1	
12.0	93.9	56.2	93.8	61.6	92.6	65.4	92.3	68.3	92.0	70.6	91.7	72.4	91.6	73.9	91.3	75.2	91.1	76.3	
14.0	75.7	47.9	75.4	55.1	75.2	60.0	75.1	63.6	74.3	66.5	74.1	68.7	74.0	70.6	73.9	72.1	73.8	73.5	
16.0	63.2	38.4	62.9	48.0	62.7	54.2	62.5	58.8	61.7	62.2	61.6	64.9	61.5	67.2	61.3	69.0	61.2	70.6	
18.0	17.4m×55.2	30.0	54.1	39.9	53.8	48.0	53.4	53.6	52.6	57.7	52.4	61.0	52.4	63.6	52.1	65.8	52.0	67.6	
20.0			47.2	30.0	46.9	41.1	46.7	48.0	45.7	53.1	45.5	56.9	45.5	60.0	45.2	62.5	45.1	64.6	
22.0					41.4	32.9	41.2	41.9	40.4	48.0	40.1	52.6	40.0	56.2	39.7	59.1	39.6	61.6	
24.0					22.6m×39.5	30.0	36.2	34.9	36.0	42.6	35.9	48.1	35.6	52.3	35.4	55.6	35.2	58.4	
26.0							25.2m×33.9	30.0	32.4	36.5	32.2	43.1	32.2	48.1	31.8	51.9	31.6	55.1	
28.0									27.8m×29.6	30.0	29.2	37.7	29.2	43.6	29.0	48.1	28.6	51.7	
30.0											26.6	31.4	26.6	38.7	26.4	43.9	26.2	48.1	
32.0											30.4m×25.1	30.0	24.3	33.1	24.2	39.5	24.0	44.3	
34.0													33.0m×23.1	30.0	22.2	34.5	22.1	40.1	
36.0															35.6m×20.6	30.0	20.3	35.6	
38.0																	18.8	30.6	
40.0																	38.2m×18.7	30.0	
No. of Part line	16		16		14		14		12		12		10		10		9		

(unit : ton)

Boomlength(m)	45.0		48.0		51.0		54.0		57.0		60.0		63.0		66.0		69.0		72.0	
	Load	Angle	Load	Angle	Load	Angle	Load	Angle	Load	Angle	Load	Angle	Load	Angle	Load	Angle	Load	Angle	Load	Angle
5.0																				
6.0																				
7.0																				
8.0																				
9.0	9.9m×108.0	80.0																		
10.0	105.7	79.8	10.4m×93.1	80.0	11.7m×87.5	80.0	11.4m×81.0	80.0												
12.0	87.8	77.2	86.3	78.0	86.0	78.8	78.0	79.4	76.9	80.0	12.5m×75.0	80.0	13.0m×75.0	80.0	13.5m×69.0	80.0				
14.0	73.8	74.6	71.6	75.6	71.3	76.4	70.1	77.2	70.0	77.9	70.0	78.5	69.8	79.1	62.9	79.6	62.9	80.0	14.6m×55.0	80.0
16.0	61.2	71.9	60.9	73.1	60.8	74.1	60.5	75.0	60.3	75.8	58.2	76.6	58.1	77.2	57.9	77.8	57.7	78.3	52.1	78.8
18.0	52.0	69.2	51.8	70.6	51.6	71.8	51.3	72.8	51.2	73.7	51.0	74.6	49.3	75.3	49.0	76.0	48.9	76.6	48.4	77.2
20.0	45.0	66.5	44.8	68.0	44.6	69.4	44.4	70.6	44.2	71.6	44.1	72.6	43.9	73.4	43.7	74.2	42.2	74.9	42.3	75.6
22.0	39.5	63.6	39.3	65.4	39.1	66.9	38.9	68.3	38.7	69.5	38.6	70.6	38.4	71.5	38.2	72.4	38.0	73.2	37.1	73.9
24.0	35.2	60.7	34.9	62.7	34.7	64.5	34.5	66.0	34.3	67.3	34.2	68.5	34.0	69.6	33.7	70.6	33.5	71.4	33.4	72.2
26.0	31.5	57.8	31.3	60.0	31.1	61.9	30.8	63.6	30.7	65.1	30.5	66.4	30.3	67.6	30.1	68.7	29.9	69.7	29.9	70.6
28.0	28.5	54.7	28.3	57.2	28.0	59.3	27.8	61.2	27.6	62.9	27.5	64.3	27.3	65.6	27.1	66.8	26.8	67.9	26.9	68.9
30.0	26.1	51.5	25.7	54.3	25.5	56.7	25.3	58.8	25.0	60.6	24.9	62.2	24.7	63.6	24.4	64.9	24.2	66.1	24.6	67.1
32.0	23.9	48.1	23.7	51.3	23.3	53.9	23.0	56.2	22.8	58.2	22.7	60.0	22.5	61.6	22.2	63.0	22.0	64.2	22.4	65.4
34.0	22.0	44.5	21.7	48.1	21.5	51.1	21.1	53.6	20.8	55.8	20.7	57.8	20.6	59.5	20.3	61.0	20.0	62.4	20.5	63.6
36.0	20.2	40.7	20.0	44.8	19.8	48.1	19.6	50.9	19.2	53.3	19.0	55.5	18.8	57.3	18.6	59.0	18.4	60.5	18.8	61.8
38.0	18.7	36.6	18.5	41.2	18.3	45.0	18.1	48.1	18.0	50.8	17.5	53.1	17.4	55.1	17.1	56.9	16.8	58.5	17.3	60.0
40.0	17.4	32.0	17.2	37.4	17.1	41.7	16.7	45.2	16.6	48.1	16.4	50.6	16.0	52.9	15.8	54.8	15.5	56.6	16.0	58.1
42.0	40.8m×16.9	30.0	16.0	33.2	15.8	38.1	15.6	42.1	15.4	45.3	15.2	48.1	15.1	50.5	14.5	52.7	14.3	54.5	14.7	56.2
44.0			43.4m×13.2	30.0	14.7	34.3	14.5	38.8	14.3	42.4	14.1	45.5	14.0	48.1	13.7	50.4	13.2	52.5	13.6	54.3
46.0					13.8	30.0	13.5	35.2	13.3	39.3	13.1	42.7	13.0	45.6	12.7	48.1	12.4	50.3	12.6	52.3
48.0							12.7	31.3	12.4	36.0	12.2	39.8	12.1	43.0	11.8	45.7	11.5	48.1	11.7	50.2
50.0							48.6m×12.4	30.0	11.6	32.3	11.4	36.7	11.2	40.2	11.0	43.2	10.7	45.8	10.9	48.1
52.0									51.2m×11.1	30.0	10.7	33.3	10.5	37.3						

AUX. JIB RATED LIFTING LOADS

WITH STANDARD BOOM (92.0t Counterweight + 19.0t Carbody weight)

(unit : ton)

Boom length(m) Working radius(m)	18.0	21.0	24.0	27.0	30.0	33.0	36.0	39.0	42.0	45.0	48.0	51.0	54.0	57.0	60.0	63.0	66.0	69.0	72.0	
5.0																				
6.0	6.0m× 13.5	6.5m× 13.5																		
7.0	13.5	13.5	7.1m× 13.5	7.6m× 13.5																
8.0	13.5	13.5	13.5	13.5	8.1m× 13.5	8.6m× 13.5														
9.0	13.5	13.5	13.5	13.5	13.5	13.5	9.1m× 13.5	9.7m× 13.5												
10.0	13.5	13.5	13.5	13.5	13.5	13.5	13.5	13.5	10.2m× 13.5	10.7m× 13.5	11.2m× 13.5	11.7m× 13.5								
12.0	13.5	13.5	13.5	13.5	13.5	13.5	13.5	13.5	13.5	13.5	13.5	13.5	12.3m× 13.5	12.8m× 13.5	13.3m× 13.5	13.8m× 13.5				
14.0	13.5	13.5	13.5	13.5	13.5	13.5	13.5	13.5	13.5	13.5	13.5	13.5	13.5	13.5	13.5	13.5	13.5	14.3m× 13.5	14.9m× 13.5	15.4m× 13.5
16.0	13.5	13.5	13.5	13.5	13.5	13.5	13.5	13.5	13.5	13.5	13.5	13.5	13.5	13.5	13.5	13.5	13.5	13.5	13.5	13.5
18.0	13.5	13.5	13.5	13.5	13.5	13.5	13.5	13.5	13.5	13.5	13.5	13.5	13.5	13.5	13.5	13.5	13.5	13.5	13.5	13.5
20.0	19.0m× 13.5	13.5	13.5	13.5	13.5	13.5	13.5	13.5	13.5	13.5	13.5	13.5	13.5	13.5	13.5	13.5	13.5	13.5	13.5	13.5
22.0		21.5m× 13.5	13.5	13.5	13.5	13.5	13.5	13.5	13.5	13.5	13.5	13.5	13.5	13.5	13.5	13.5	13.5	13.5	13.5	13.5
24.0			13.5	13.5	13.5	13.5	13.5	13.5	13.5	13.5	13.5	13.5	13.5	13.5	13.5	13.5	13.5	13.5	13.5	13.5
26.0			24.1m× 13.5	13.5	13.5	13.5	13.5	13.5	13.5	13.5	13.5	13.5	13.5	13.5	13.5	13.5	13.5	13.5	13.5	13.5
28.0				26.7m× 13.5	13.5	13.5	13.5	13.5	13.5	13.5	13.5	13.5	13.5	13.5	13.5	13.5	13.5	13.5	13.5	13.5
30.0					29.3m× 13.5	13.5	13.5	13.5	13.5	13.5	13.5	13.5	13.5	13.5	13.5	13.5	13.5	13.5	13.5	13.5
32.0						31.9m× 13.5	13.5	13.5	13.5	13.5	13.5	13.5	13.5	13.5	13.5	13.5	13.5	13.5	13.5	13.5
34.0							13.5	13.5	13.5	13.5	13.5	13.5	13.5	13.5	13.5	13.5	13.5	13.5	13.5	13.5
36.0							34.5m× 13.5	13.5	13.5	13.5	13.5	13.5	13.5	13.5	13.5	13.5	13.5	13.5	13.5	13.5
38.0								37.1m× 13.5	13.5	13.5	13.5	13.5	13.5	13.5	13.5	13.5	13.5	13.5	13.5	13.5
40.0									39.7m× 13.5	13.5	13.5	13.5	13.5	13.5	13.5	13.5	13.5	13.5	13.5	13.5
42.0										13.5	13.5	13.5	13.5	13.5	13.5	13.5	13.5	13.5	13.5	13.5
44.0											42.3m× 13.5	13.5	13.5	13.5	13.5	13.5	13.5	13.3	12.8	13.2
46.0												44.9m× 13.5	13.4	13.1	12.9	12.7	12.6	12.3	12.0	12.2
48.0													47.5m× 12.7	12.3	12.0	11.8	11.7	11.4	11.1	11.3
50.0														11.3	11.2	11.0	10.8	10.6	10.3	10.5
52.0														50.1m× 11.3	10.3	10.3	10.1	9.9	9.5	9.8
54.0															52.7m× 10.1	9.5	9.4	9.1	8.7	9.1
56.0																55.3m× 9.0	8.7	8.4	8.1	8.3
58.0																	57.9m× 8.1	7.8	7.4	7.4
60.0																		7.2	6.8	6.7
62.0																		60.5m× 7.1	6.2	6.1
64.0																			63.1m× 5.9	5.6
66.0																				65.7m× 5.0
No. of Part line	1	1	1	1	1	1	1	1	1	1	1	1	1	1	1	1	1	1	1	1

(Note)

- 1.RATED LOADS ARE ACCORDING TO EN13000 , AND FOR FULL SWINGING OF 360° ON A FIRM LEVEL GROUND.
 - 2.THE WORKING RADIUS REFERS TO THE HORIZONTAL DISTANCE FROM THE CENTER OF SWINGING TO THE HOOK AXIS.
 - 3.THE ACTUAL LIFTING LOAD IS OBTAINED BY SUBTRACTING THE MASS OF ALL LIFTING EQUIPMENT SUCH AS THE MAIN HOOK,AUX. HOOK,ETC. FROM THE VALUES GIVEN IN THIS TABLE.
- 250t Hook...3.5t 135t Hook...2.9t 90t Hook...1.6t 35t Hook...1.1t
 200t Hook...3.0t 125t Hook...2.4t 60t Hook...1.4t 13.5t Hook...0.6t

CRANE

LIGHT BOOM RATED LIFTING LOADS (92.0t Counterweight + 19.0t Carbody weight)

(unit : ton)

Boom length(m) Working radius(m)	72.0		75.0		78.0		81.0		84.0		87.0		90.0		93.0	
	Load	Angle	Load	Angle	Load	Angle	Load	Angle	Load	Angle	Load	Angle	Load	Angle	Load	Angle
14.0	14.4m× 37.5	80.0	14.9m× 39.5	80.0	15.4m× 39.9	80.0	16.0m× 31.5	80.0								
16.0	37.5	78.7	35.0	79.2	33.5	79.6	16.5m× 31.5	79.6	16.5m× 27.0	80.0	17.0m× 25.0	80.0	17.5m× 22.6	80.0	18.0m× 21.0	80.0
18.0	36.1	77.1	34.0	77.6	31.8	78.1	30.3	78.5	27.0	78.2	25.0	78.3	22.6	79.0	18.2m× 21.0	79.9
20.0	34.2	75.4	32.6	76.0	30.3	76.6	29.3	77.1	27.0	77.6	25.0	77.9	22.6	78.3	20.2	78.7
22.0	32.5	73.8	31.2	74.4	29.0	75.1	27.9	75.6	26.6	76.1	24.2	76.6	21.5	77.0	19.4	77.5
24.0	31.0	72.1	29.8	72.9	27.7	73.5	26.7	74.2	25.6	74.7	23.0	75.2	20.4	75.7	18.3	76.2
26.0	29.4	70.4	28.3	71.2	26.6	72.0	25.6	72.7	24.5	73.3	21.9	73.8	19.4	74.4	17.4	74.9
28.0	27.2	68.7	26.5	69.6	25.4	70.4	24.5	71.2	23.5	71.9	20.8	72.5	18.5	73.1	16.5	73.6
30.0	24.6	67.0	24.4	68.0	24.1	68.9	23.5	69.7	22.5	70.4	19.7	71.1	17.6	71.7	15.8	72.3
32.0	22.6	65.3	22.5	66.3	22.4	67.3	22.2	68.2	21.1	69.0	18.7	69.6	16.8	70.4	15.0	71.0
34.0	21.0	63.5	20.8	64.6	20.6	65.7	20.4	66.6	19.8	67.5	17.8	68.2	15.9	69.0	14.3	69.7
36.0	19.5	61.7	19.2	62.9	19.1	64.1	18.9	65.1	18.6	66.0	16.9	66.8	15.1	67.6	13.6	68.4
38.0	18.0	59.9	17.8	61.2	17.7	62.4	17.6	63.5	17.5	64.5	15.9	65.3	14.3	66.2	13.0	67.0
40.0	16.7	58.0	16.5	59.4	16.4	60.7	16.3	61.9	16.4	63.0	15.0	63.9	13.5	64.8	12.3	65.7
42.0	15.5	56.1	15.4	57.6	15.3	59.0	15.2	60.3	15.1	61.5	14.1	62.4	12.8	63.4	11.7	64.3
44.0	14.4	54.2	14.3	55.8	14.2	57.3	14.1	58.6	14.0	59.9	13.2	60.9	12.1	61.9	11.2	62.9
46.0	13.4	52.2	13.3	53.9	13.2	55.5	13.1	57.0	13.0	58.3	12.4	59.4	11.5	60.5	10.7	61.5
48.0	12.7	50.1	12.6	52.0	12.4	53.7	12.3	55.3	12.2	56.7	11.8	57.8	10.9	59.0	10.3	60.1
50.0	11.9	48.0	11.8	50.0	11.6	51.9	11.5	53.5	11.5	55.0	11.1	56.2	10.4	57.5	9.9	58.7
52.0	11.2	45.8	11.1	48.0	11.0	50.0	10.9	51.7	10.8	53.3	10.4	54.6	9.9	56.0	9.4	57.2
54.0	10.4	43.5	10.4	45.9	10.3	48.0	10.2	49.9	10.1	51.6	9.8	53.0	9.3	54.4	9.0	55.7
56.0	9.8	41.2	9.7	43.7	9.6	46.0	9.5	48.0	9.4	49.8	9.2	51.3	8.7	52.8	8.3	54.2
58.0	9.1	38.7	9.1	41.5	8.9	43.9	8.8	46.1	8.8	48.0	8.5	49.6	8.2	51.2	7.7	52.7
60.0	8.5	36.0	8.5	39.1	8.4	41.7	8.2	44.1	8.2	46.2	7.9	47.8	7.6	49.5	7.2	51.1
62.0	7.9	33.2	7.9	36.6	7.8	39.5	7.8	42.0	7.6	44.2	7.4	46.0	7.0	47.8	6.6	49.5
64.0	7.4	30.2	7.3	33.9	7.3	37.1	7.3	39.8	7.1	42.2	7.0	44.1	6.5	46.0	6.1	47.8
66.0	64.1m× 7.3	30.0	6.8	31.1	6.8	34.6	6.8	37.6	6.6	40.1	6.5	42.1	6.1	44.2	5.6	46.1
68.0			66.7m× 6.7	30.0	6.3	31.9	6.4	35.2	6.1	38.0	6.0	40.1	5.7	42.4	5.1	44.4
70.0					69.3m× 6.0	30.0	5.9	32.6	5.6	35.7	5.6	38.0	5.3	40.4	4.6	42.6
72.0							71.9m× 5.8	30.0	5.2	33.3	5.2	35.8	4.8	38.4	4.1	40.7
74.0									4.8	30.7	4.7	33.5	4.4	36.3	3.6	38.7
76.0									74.5m× 4.6	30.0	4.3	31.0	4.0	34.1	3.1	36.7
78.0											76.7m× 3.7	30.0	3.6	31.7	2.7	34.6
80.0													79.3m× 2.4	30.0	2.3	32.3
No. of Part line	3		3		3		3		3		2		2		2	

(Note)

- RATED LOADS ARE ACCORDING TO EN13000 , AND FOR FULL SWINGING OF 360° ON A FIRM LEVEL GROUND.
- THE FIGURE ENCLOSED WITHIN BOLD LINES IN THIS TABLE ARE THE VALUES DETERMINED BASED ON THE STRENGTH OF THE BOOM,ETC.
- THE WORKING RADIUS REFERS TO THE HORIZONTAL DISTANCE FROM THE CENTER OF SWINGING TO THE HOOK AXIS.
- FOR THE OPERATION, BE SURE TO RAISE THE A-FRAME.
- THE LENGTH OF THE BOOM WHICH CAN BE MOUNTED WITH THE AUX. JIB IS 72.0m~90.0m.
- THE ACTUAL LIFTING LOAD IS OBTAINED BY SUBTRACTING THE MASS OF ALL LIFTING EQUIPMENT SUCH AS THE MAIN HOOK,AUX. HOOK,ETC. FROM THE VALUES GIVEN IN THIS TABLE.
60t Hook...1.4t 35t Hook...1.1t 13.5t Hook...0.6t
- WHEN THE AUX.JIB IS MOUNTED, RATED LOAD WITH THE MAIN HOOK IS OBTAINED BY SUBTRACTING 0.8ton (INCLUDING THE MASS OF THE AUX. HOOK) FROM THE VALUES GIVEN IN THIS TABLE.
- THE RATED LOAD OF THE AUX. JIB IS OBTAINED BY SUBTRACTING 0.4t FROM THE VALUES GIVEN IN THIS TABLE CORRESPONDING TO THE LENGTH OF THE MOUNTED BOOM. BUT THE MAX. RATED LOAD IS 13.5ton.
- WHEN THE MAIN HOOK IS MOUNTED THE LOAD WHICH CAN BE LIFTED WITH THE JIB IS GIVEN BY SUBTRACTING THE TOTAL MASS OF MAIN AND AUX. HOOKS FROM THE VALUE IN THIS TABLE.
- THE RATED LOAD ARE LIMITED ACCORDING TO THE WIRE ROPE PART LINE AS SHOWN BELOW:
1 PART OF LINE ... UP TO 13.5 ton 2 PART OF LINE ... UP TO 25.0ton 3 PART OF LINE ... UP TO 37.5ton

AUX. JIB RATED LIFTING LOADS

WITH LIGHT BOOM (92.0t Counterweight + 19.0t Carbody weight)

(unit : ton)

Working radius(m)	Boom length (m)							
	72.0	75.0	78.0	81.0	84.0	87.0	90.0	
14.0	15.2m× 13.5	15.7m× 13.5						
16.0	13.5	13.5	16.3m× 13.5	16.8m× 13.5	17.3m× 13.5	17.8m× 13.5		
18.0	13.5	13.5	13.5	13.5	13.5	13.5	18.3m× 13.5	
20.0	13.5	13.5	13.5	13.5	13.5	13.5	13.5	
22.0	13.5	13.5	13.5	13.5	13.5	13.5	13.5	
24.0	13.5	13.5	13.5	13.5	13.5	13.5	13.5	
26.0	13.5	13.5	13.5	13.5	13.5	13.5	13.5	
28.0	13.5	13.5	13.5	13.5	13.5	13.5	13.5	
30.0	13.5	13.5	13.5	13.5	13.5	13.5	13.5	
32.0	13.5	13.5	13.5	13.5	13.5	13.5	13.5	
34.0	13.5	13.5	13.5	13.5	13.5	13.5	13.5	
36.0	13.5	13.5	13.5	13.5	13.5	13.5	13.5	
38.0	13.5	13.5	13.5	13.5	13.5	13.5	13.5	
40.0	13.5	13.5	13.5	13.5	13.5	13.5	13.5	
42.0	13.5	13.5	13.5	13.5	13.5	13.5	13.5	
44.0	13.5	13.5	13.5	13.5	13.5	12.8	11.7	
46.0	13.0	12.9	12.8	12.7	12.6	12.0	11.1	
48.0	12.3	12.2	12.0	11.9	11.8	11.4	10.5	
50.0	11.5	11.4	11.2	11.1	11.1	10.7	10.0	
52.0	10.8	10.7	10.6	10.5	10.4	10.0	9.5	
54.0	10.0	10.0	9.9	9.8	9.7	9.4	8.9	
56.0	9.4	9.3	9.2	9.1	9.0	8.8	8.3	
58.0	8.7	8.7	8.5	8.4	8.4	8.1	7.8	
60.0	8.1	8.1	8.0	7.8	7.8	7.5	7.2	
62.0	7.5	7.5	7.4	7.4	7.2	7.0	6.6	
64.0	7.0	6.9	6.9	6.9	6.7	6.6	6.1	
66.0	65.6m× 6.7	6.4	6.4	6.4	6.2	6.1	5.7	
68.0		6.3	5.9	6.0	5.7	5.6	5.3	
70.0		69.2m× 6.0	5.6	5.5	5.2	5.2	4.9	
72.0			70.8m× 5.3	5.1	4.8	4.8	4.4	
74.0				73.4m× 4.8	4.4	4.3	4.0	
76.0					3.9	3.9	3.6	
78.0						3.7	3.2	
80.0						78.6m× 3.4	2.9	
No. of Part line	1	1	1	1	1	1	1	

(Note)

- RATED LOADS ARE ACCORDING TO EN13000 , AND FOR FULL SWINGING OF 360° ON A FIRM LEVEL GROUND.
- THE WORKING RADIUS REFERS TO THE HORIZONTAL DISTANCE FROM THE CENTER OF SWINGING TO THE HOOK AXIS.
- THE ACTUAL LIFTING LOAD IS OBTAINED BY SUBTRACTING THE MASS OF ALL LIFTING EQUIPMENT SUCH AS THE MAIN HOOK,AUX. HOOK,ETC. FROM THE VALUES GIVEN IN THIS TABLE.
60t Hook...1.4t 35t Hook...1.1t 13.5t Hook...0.6t

CRANE JIB RATED LIFTING LOADS

WITH STANDARD BOOM (92.0t Counterweight + 19.0t Carbody weight)

(unit : ton)

Boom length(m)	45.0										48.0									
Jib length(m)	13.0		19.0		25.0		31.0		37.0		13.0		19.0		25.0		31.0		37.0	
Jib offset angle	10°	30°	10°	30°	10°	30°	10°	30°	10°	30°	10°	30°	10°	30°	10°	30°	10°	30°	10°	30°
Working radius (m)																				
14.0	27.0																			
16.0	27.0																			
18.0	27.0	21.7	25.0																	
20.0	27.0	20.6	24.2																	
22.0	27.0	19.7	23.5																	
24.0	27.0	18.8	22.9	13.5	12.7															
26.0	27.0	18.1	21.6	13.5	12.3															
28.0	27.0	17.4	20.3	13.2	11.9	9.3	7.2													
30.0	27.0	16.7	19.1	12.7	11.6	9.1	6.9	5.3	4.4											
32.0	24.9	16.2	18.0	12.3	11.3	8.9	6.7	5.1	4.2											
34.0	22.9	15.6	17.1	11.8	11.0	8.7	6.5	5.0	4.0	2.9										
36.0	21.0	15.2	16.2	11.4	10.7	8.6	6.2	4.9	3.8	2.8										
38.0	19.4	14.7	15.5	11.1	10.4	8.4	6.1	4.7	3.7	2.8										
40.0	18.0	14.4	14.8	10.7	10.1	8.2	5.9	4.6	3.5	2.7										
42.0	16.7	14.0	14.1	10.4	9.9	8.1	5.7	4.5	3.4	2.6										
44.0	15.6	13.7	13.6	10.2	9.7	8.0	5.5	4.4	3.3	2.5										
46.0	14.5	13.4	13.0	9.9	9.5	7.8	5.4	4.3	3.2	2.4										
48.0	13.6	13.2	12.5	9.7	9.3	7.6	5.2	4.2	3.0	2.4										
50.0	12.7	12.9	12.1	9.5	9.1	7.4	5.1	4.1	2.9	2.3										
52.0	11.9	12.0	11.7	9.3	8.9	7.2	4.9	4.1	2.8	2.2										
54.0	53.0m×11.5	53.5m×11.4	11.3	9.2	8.8	7.1	4.8	4.0	2.7	2.2										
56.0			10.9	9.0	8.6	6.9	4.7	3.9	2.7	2.1										
58.0			10.3	8.9	8.5	6.8	4.6	3.9	2.6	2.1										
60.0			58.5m×10.1	8.9	8.3	6.7	4.5	3.8	2.5	2.0										
62.0					8.0	6.6	4.4	3.8	2.4	2.0										
64.0					7.8	6.5	4.3	3.7	2.3	1.9										
66.0					64.5m×7.8	6.5	4.2	3.7	2.3	1.9										
68.0							4.2	3.7	2.2	1.8										
70.0							4.1	3.7	2.1	1.8										
72.0								3.7	2.1	1.8										
74.0									2.0	1.8										
76.0									75.0m×2.0	1.8										
78.0										1.8										
80.0																				
82.0																				
84.0																				
86.0																				
88.0																				
90.0																				
No. of Part line	2	2	2	1	1	1	1	1	1	1	2	2	2	1	1	1	1	1	1	1

(unit : ton)

Boom length(m)	51.0										54.0									
Jib length(m)	13.0		19.0		25.0		31.0		37.0		13.0		19.0		25.0		31.0		37.0	
Jib offset angle	10°	30°	10°	30°	10°	30°	10°	30°	10°	30°	10°	30°	10°	30°	10°	30°	10°	30°	10°	30°
Working radius (m)																				
14.0	15.5m×27.0																			
16.0	27.0																			
18.0	27.0	19.0m×21.7	25.0																	
20.0	27.0	21.2	24.7																	
22.0	27.0	20.3	24.0																	
24.0	27.0	19.5	23.4	13.5	13.0															
26.0	27.0	18.7	22.8	13.5	12.6															
28.0	27.0	18.0	21.6	13.5	12.2	9.4	7.4													
30.0	26.8	17.4	20.4	13.1	11.9	9.2	7.1													
32.0	24.5	16.8	19.3	12.7	11.6	9.0	6.9	5.2	4.3											
34.0	22.4	16.3	18.3	12.3	11.3	8.9	6.7	5.1	4.2											
36.0	20.6	15.8	17.4	11.9	11.0	8.7	6.5	4.9	4.0	2.9										
38.0	18.9	15.4	16.6	11.5	10.7	8.5	6.3	4.8	3.8	2.8										
40.0	17.5	15.0	15.9	11.2	10.5	8.4	6.1	4.7	3.7	2.7										
42.0	16.2	14.6	15.2	10.9	10.2	8.3	5.9	4.6	3.6	2.6										
44.0	15.1	14.3	14.6	10.6	10.0	8.1	5.7	4.5	3.4	2.6										
46.0	14.0	14.0	14.0	10.3	9.8	8.0	5.6	4.4	3.3	2.5										
48.0	13.1	13.4	13.5	10.1	9.6	7.9	5.4	4.3	3.2	2.4										
50.0	12.2	12.5	12.7	9.9	9.4	7.7	5.3	4.3	3.1	2.4										
52.0	11.4	11.6	11.9	9.7	9.2	7.5	5.2	4.2	3.0	2.3										
54.0	10.6	10.8	11.1	9.5	9.1	7.4	5.0	4.1	2.9	2.2										
56.0	9.9	10.1	10.4	9.3	8.9	7.2	4.9	4.0	2.8	2.2										
58.0	9.3	9.4	9.8	9.2	8.8	7.1	4.8	4.0	2.7	2.1										
60.0		59.0m×9.1	9.2	9.1	8.6	6.9	4.7	3.9	2.6	2.1										
62.0			8.6	8.8	8.5	6.8	4.6	3.9	2.6	2.0										
64.0			8.0	8.2	8.4	6.7	4.5	3.8	2.5	2.0										
66.0					65.0m×7.8	7.9	6.6	4.4	3.8	2.4										
68.0						7.4	6.5	4.3	3.8	2.3										
70.0						69.5m×7.0	6.5	4.3	3.7	2.3										
72.0								7.0m×6.5	4.2	3.7	2.2									
74.0									4.1	3.7	2.2									
76.0									75.0m×4.1	3.7	2.1									
78.0										77.0m×3.7	2.1									
80.0											2.0									
82.0																				
84.0																				
86.0																				
88.0																				
90.0																				
No. of Part line	2	2	2	1	1	1	1	1	1	1	2	2	2	1	1	1	1	1	1	1

CRANE

CRANE JIB RATED LIFTING LOADS

WITH STANDARD BOOM (92.0t Counterweight + 19.0t Carbody weight)

(unit : ton)

Boom length(m)		57.0										60.0										
Jib length(m)		13.0		19.0		25.0		31.0		37.0		13.0		19.0		25.0		31.0		37.0		
Jib offset angle		10°		30°		10°		30°		10°		30°		10°		30°		10°		30°		
Working radius (m)		10°		30°		10°		30°		10°		30°		10°		30°		10°		30°		
14.0																						
16.0	16.5m×27.0											17.0m×27.0										
18.0	27.0											27.0		19.5m×25.0								
20.0	27.0	21.8	25.0			20.5m×13.5						27.0	21.0m×21.5	25.0		21.0m×13.5						
22.0	27.0	20.9	24.4			13.5		22.5m×8.3				27.0	21.1	24.6		13.5		23.0m×8.3				
24.0	27.0	20.1	23.9			13.2		8.1				27.0	20.3	24.1		13.3		25.0m×13.5			25.5m×5.1	
26.0	27.0	19.3	23.3			13.5		12.9		7.8		5.0		27.0	19.6	23.5		13.5		13.0	7.9	
28.0	27.0	18.6	22.8			13.5		12.5	9.5	7.6		4.8		27.0	18.9	23.0		13.5		12.6	7.6	
30.0	26.4	18.0	21.6			13.5		12.2	9.3	7.3		4.6		26.1	18.3	22.1		13.5		12.3	7.4	
32.0	24.0	17.5	20.4			13.1		11.9	9.2	7.1	5.3	4.5		23.7	17.7	21.0		13.2		12.0	7.2	
34.0	21.9	16.9	19.4			12.7		11.6	9.0	6.9	5.1	4.3		21.7	17.2	20.0		12.8		11.7	7.0	
36.0	20.1	16.4	18.5			12.3		11.3	8.8	6.7	5.0	4.1	3.0	19.8	16.7	19.0		12.4		11.4	6.8	
38.0	18.4	16.0	17.6			11.9		11.0	8.7	6.5	4.9	4.0	2.9	18.2	16.3	18.2		12.1		11.2	6.6	
40.0	17.0	15.6	16.9			11.6		10.8	8.5	6.3	4.8	3.8	2.8	16.8	15.9	17.4		11.8		10.9	6.4	
42.0	15.7	15.2	16.2			11.3		10.6	8.4	6.1	4.7	3.7	2.7	15.5	15.5	16.1		11.4		10.7	6.2	
44.0	14.6	14.8	15.1			11.0		10.3	8.3	6.0	4.6	3.6	2.6	14.3	14.8	14.9		11.2		10.5	6.1	
46.0	13.5	13.9	14.0			10.7		10.1	8.2	5.8	4.5	3.5	2.6	13.3	13.7	13.8		10.9		10.3	6.0	
48.0	12.5	12.9	13.1			10.5		9.9	8.1	5.7	4.4	3.4	2.5	12.3	12.7	12.8		10.6		10.1	5.8	
50.0	11.7	12.0	12.2			10.2		9.7	8.0	5.5	4.4	3.2	2.4	11.4	11.8	12.0		10.4		9.9	5.6	
52.0	10.9	11.2	11.4			10.0		9.5	7.8	5.4	4.3	3.1	2.4	10.6	11.0	11.1		10.2		9.7	5.5	
54.0	10.1	10.4	10.6			9.8		9.4	7.6	5.2	4.2	3.0	2.3	9.8	10.2	10.4		10.0		9.5	5.3	
56.0	9.4	9.7	9.9			9.6		9.2	7.5	5.1	4.1	3.0	2.3	9.1	9.4	9.7		9.8		9.4	5.2	
58.0	8.7	8.9	9.3			9.5		9.1	7.3	5.0	4.1	2.9	2.2	8.4	8.7	9.0		9.4		9.2	5.1	
60.0	8.0	8.3	8.6			9.0		8.9	7.2	4.9	4.0	2.8	2.2	7.8	8.0	8.3		8.7		8.8	5.0	
62.0	7.4	7.6	8.0			8.3		8.4	7.0	4.8	4.0	2.7	2.1	7.2	7.4	7.7		8.1		8.2	4.9	
64.0	63.5m×7.6	7.0	7.4			7.7		7.9	6.9	4.7	3.9	2.6	2.1	6.6	6.8	7.1		7.5		7.6	4.8	
66.0			6.9			7.1		7.3	6.8	4.6	3.9	2.5	2.0	6.1	6.2	6.6		6.9		7.1	4.7	
68.0			6.4			6.6		6.8	6.7	4.5	3.8	2.5	2.0		6.1	6.4		6.6		6.8	4.6	
70.0			6.0			6.3		6.6	6.4	4.4	3.8	2.4	1.9		5.6	5.8		6.1		6.4	4.5	
72.0			5.9			6.2		6.4	6.2	4.3	3.8	2.3	1.9		5.3	5.6		5.9		6.1	4.4	
74.0			5.5			5.7		6.0	5.8	4.2	3.7	2.3	1.9		5.1	5.2		5.5		5.8	4.3	
76.0			5.2			5.4		5.6	5.4	4.1	3.6	2.2	1.8		4.8	5.0		5.2		5.5	4.2	
78.0			4.2			4.3		4.5	4.3	4.0	3.7	2.2	1.8		4.6	4.6		4.8		5.0	4.1	
80.0			4.1			4.1		4.1	3.7	3.7	3.4	2.1	1.8		4.4	4.4		4.8		5.0	4.0	
82.0								80.5m×4.1		3.7	3.7	2.1	1.8								4.0	3.7
84.0										82.5m×3.7		2.0	1.8								83.0m×3.6	3.7
86.0												85.5m×2.9	1.8									85.0m×3.6
88.0													1.8									2.0
90.0												88.5m×1.8										89.0m×2.0
92.0																						91.0m×1.8
No. of Part line	2	2	2	1	1	1	1	1	1	1	1	2	2	2	1	1	1	1	1	1	1	

(unit : ton)

Boom length(m)		63.0										66.0									
Jib length(m)		13.0		19.0		25.0		31.0		37.0		13.0		19.0		25.0		31.0		37.0	
Jib offset angle		10°		30°		10°		30°		10°		30°		10°		30°		10°		30°	
Working radius (m)		10°		30°		10°		30°		10°		30°		10°		30°		10°		30°	
14.0																					
16.0	17.5m×27.0																				
18.0	27.0											27.0									
20.0	27.0	21.5m×21.5	25.0			21.5m×13.5						27.0		20.5m×25.0							
22.0	27.0	21.4	24.8			13.5						27.0	21.6	25.0		13.5					
24.0	27.0	20.6	24.3			13.5		8.2				27.0	20.8	24.4		13.5		24.5m×8.3			
26.0	27.0	19.9	23.7			13.5		13.1		8.0		5.1		27.0	20.1	23.9		13.5		13.2	8.1
28.0	27.0	19.2	23.2			13.5		12.8		7.7		4.9		27.0	19.4	23.4		13.5		12.9	7.8
30.0	25.9	18.6	22.7			13.5		12.4	9.4	7.5		4.8		25.7	18.8	22.9		13.5		12.6	7.6
32.0	23.5	18.0	21.5			13.4		12.1	9.3	7.3		4.6		23.3	18.3	22.1		13.5		12.3	7.4
34.0	21.4	17.5	20.5			13.0		11.9	9.1	7.1	5.2	4.4		21.2	17.7	21.0		13.2		12.0	7.1
36.0	19.6	17.0	19.5			12.6		11.6	9.0	6.9	5.1	4.3		19.3	17.3	20.0		12.8		11.7	6.9
38.0	18.0	16.5	18.6			12.3		11.3	8.8	6.7	5.0	4.1	2.9	17.7	16.8	18.4		12.4		11.5	6.8
40.0	16.6	16.1	17.2			11.9		11.1	8.7	6.5	4.9	4.0	2.8	16.3	16.4	16.9		12.1		11.2	6.6
42.0	15.3	15.7	15.9			11.6		10.8	8.5	6.3	4.8	3.9	2.8	15.0	15.6	15.6		11.8		11.0	6.4
44.0	14.1	14.6	14.7			11.3		10.6	8.4	6.1	4.7	3.7	2.7	13.8	14.4	14.4		11.5		10.8	6.2
46.0	13.0	13.5	13.6			11.1		10.4	8.3	6.0	4.6	3.6	2.6	12.8	13.3	13.4		11.2		10.5	6.1
48.0	12.1	12.5	12.6			10.8		10.2	8.2	5.8	4.5	3.5	2.6	11.8	12.3	12.4		11.0		10.3	5.9
50.0	11.2	11.6	11.7			10.6		10.0	8.1	5.7	4.4	3.4	2.5	10.9	11.4	11.5		10.7		10.2	5.8
52.0	10.4	10.8	10.9			10.4		9.8	8.0	5.6	4.4	3.3	2.4	10.0	10.5	10.7		10.5		10.0	5.7
54.0	9.6	10.0	10.2			10.2		9.7	7.9	5.4	4.3	3.2	2.4	9.2	9.7	9.9		10.3		9.8	5.5
56.0	8.8	9.2	9.4			9.9		9.5	7.7	5.3	4.2	3.1	2.3	8.5	8.9	9.1		9.7		9.6	5.4
58.0	8.1	8.5	8.7			9.2		9.2	7.6	5.2	4.2	3.0	2.3	7.8	8.2	8.4		9.0		8.9	5.3
60.0	7.5	7.8	8.1			8.5		8.5	7.4	5.1	4.1	2.9	2.2	7.2	7.5	7.7		8.3		8.2	5.2
62.0	6.9	7.2	7.5			7.9		7.9	7.3	5.0	4.0	2.8	2.2	6.6	6.9	7.1		7.6		7.4	5.1
64.0	6.3	6.6	6.9			7.3		7.3	7.2	4.9	4.0	2.8	2.1	6.0	6.3	6.6		7.0		7.0	5.0
66.0	5.8	6.0	6.4			6.7		6.8	7.0	4.8	3.9	2.7	2.1	5.4	5.7	6.0		6.4		6.5	4.9
68.0	5.3	5.5	5.9			6.1		6.3	6.8	4.7	3.9	2.6	2.0	4.9	5.1	5.5		6.0		6.5	4.8
70.0	68.5m×5.2	69.5m×5.1				5.4		5.6	5.8	4.6	3.9	2.5	2.0	4.4	4.6	5.0		5.4		5.5	4.7
72.0			4.9			5.1		5.4	5.7	4.5	3.8	2.5	2.0		4.1	4.5		4.8		5.0	4.6
74.0			4.4			4.6		4.9	5.3	4.4	3.8	2.4	1.9		4.1	4.3		4.			

CRANE JIB RATED LIFTING LOADS

WITH STANDARD BOOM (92.0t Counterweight + 19.0t Carbody weight)

(unit : ton)

Boom length(m) Jib length(m) Jib offset angle Working radius (m)	69.0										72.0									
	13.0		19.0		25.0		31.0		37.0		13.0		19.0		25.0		31.0		37.0	
	10°	30°	10°	30°	10°	30°	10°	30°	10°	30°	10°	30°	10°	30°	10°	30°	10°	30°	10°	30°
14.0																				
16.0																				
18.0	18.5m× 27.0													19.0m× 27.0						
20.0	27.0		21.0m× 25.0											27.0	21.5m× 25.0					
22.0	27.0	22.5m× 21.6	25.0		23.0m× 13.5								27.0	23.0m× 21.6	25.0		23.5m× 13.5			
24.0	27.0	21.0	24.6		13.5		25.0m× 8.3						27.0	21.2	24.8		13.5		25.5m× 8.3	
26.0	27.0	20.3	24.1	26.5m× 13.6	13.3		8.1			27.0m× 9.2			27.0	20.6	24.3	27.0m× 13.5	13.4		8.2	27.5m× 9.2
28.0	27.0	19.7	23.6	13.5	13.0		7.9			5.1			27.0	19.9	23.8	13.5	13.1		8.0	5.1
30.0	25.5	19.1	23.1	13.5	12.7	30.5m× 9.5	7.6			4.9			25.2	19.3	23.3	13.5	12.8	31.0m× 9.5	7.7	4.9
32.0	23.1	18.5	22.6	13.5	12.4	9.4	7.4			4.7			22.8	18.8	22.9	13.5	12.5	9.4	7.5	4.8
34.0	21.0	18.0	21.5	13.3	12.1	9.2	7.2	5.3		4.5			20.7	18.2	21.5	13.5	12.2	9.3	7.3	34.5m× 9.3
36.0	19.1	17.5	19.8	13.0	11.8	9.1	7.0	5.2	4.4				18.9	17.7	19.6	13.1	12.0	9.1	7.1	5.2
38.0	17.5	17.1	18.2	12.6	11.6	8.9	6.8	5.1	4.2	3.0			17.3	17.3	18.0	12.8	11.7	9.0	6.9	5.1
40.0	16.1	16.6	16.7	12.3	11.3	8.8	6.7	5.0	4.1	2.9			15.8	16.6	16.5	12.4	11.5	8.8	6.7	5.0
42.0	14.8	15.4	15.4	12.0	11.1	8.7	6.5	4.9	4.0	2.8			14.5	15.2	15.2	12.1	11.2	8.7	6.6	4.9
44.0	13.6	14.2	14.2	11.7	10.9	8.5	6.3	4.8	3.9	2.7			13.4	14.0	14.0	11.8	11.0	8.6	6.4	4.8
46.0	12.5	13.1	13.1	11.4	10.7	8.4	6.2	4.7	3.7	2.7			12.3	12.9	12.9	11.6	10.8	8.5	6.3	4.7
48.0	11.6	12.1	12.2	11.1	10.5	8.3	6.0	4.6	3.6	2.6			11.3	11.9	11.9	11.3	10.6	8.4	6.1	4.7
50.0	10.6	11.2	11.3	10.9	10.3	8.2	5.9	4.5	3.5	2.6			10.4	11.0	11.0	11.1	10.4	8.3	6.0	4.6
52.0	9.8	10.3	10.4	10.7	10.1	8.1	5.8	4.5	3.4	2.5			9.5	10.0	10.1	10.8	10.2	8.2	5.8	4.5
54.0	9.0	9.4	9.6	10.3	9.9	8.0	5.6	4.4	3.3	2.4			8.7	9.2	9.3	10.1	9.8	8.1	5.7	4.4
56.0	8.2	8.7	8.8	9.5	9.3	7.9	5.5	4.3	3.2	2.4			7.9	8.4	8.6	9.2	9.1	8.0	5.6	4.4
58.0	7.5	7.9	8.1	8.7	8.6	7.8	5.4	4.3	3.1	2.3			7.2	7.7	7.9	8.5	8.4	7.9	5.5	4.3
60.0	6.9	7.3	7.5	8.0	8.0	7.7	5.3	4.2	3.0	2.3			6.6	7.0	7.2	7.8	7.7	7.8	5.4	4.2
62.0	6.3	6.6	6.9	7.4	7.3	7.5	5.2	4.1	3.0	2.2			6.0	6.4	6.6	7.1	7.1	7.6	5.2	4.2
64.0	5.7	6.0	6.3	6.8	6.8	7.4	5.1	4.1	2.9	2.2			5.4	5.8	6.0	6.5	6.5	7.2	5.1	4.1
66.0	5.1	5.4	5.8	6.2	6.2	6.8	5.0	4.0	2.8	2.1			4.8	5.2	5.5	5.9	6.0	6.6	5.0	4.1
68.0	4.6	4.9	5.2	5.6	5.7	6.3	4.9	4.0	2.7	2.1			4.3	4.6	4.9	5.4	5.4	6.0	5.0	4.0
70.0	4.1	4.3	4.7	5.1	5.2	5.8	4.8	3.9	2.7	2.1			3.8	4.0	4.4	4.8	4.9	5.5	4.9	4.0
72.0	3.6	3.8	4.2	4.6	4.7	5.3	4.7	3.9	2.6	2.0			3.3	3.5	3.9	4.3	4.4	5.0	4.8	3.9
74.0	3.2	3.3	3.8	4.1	4.3	4.8	4.6	3.9	2.5	2.0			2.8	3.0	3.5	3.8	4.0	4.5	4.4	3.9
76.0		75.0m× 3.1	3.3	3.6	3.8	4.3	4.3	3.8	2.5	2.0			2.4	2.6	3.0	3.3	3.5	4.0	3.9	3.9
78.0			2.9	3.1	3.4	3.8	3.8	3.4	2.4	1.9			77.0m× 2.2	77.0m× 2.3	2.6	2.9	3.1	3.6	3.5	3.8
80.0			2.5	2.7	3.0	3.4	3.4	3.8	2.4	1.9					2.2	2.4	2.7	3.1	3.1	3.7
82.0				81.0m× 2.6	2.6	2.9	3.1	3.5	2.3	1.9					1.8	2.0	2.3	2.7	3.3	2.4
84.0					2.3	2.5	2.7	3.1	2.3	1.8						83.0m× 1.8	2.0	2.3	2.4	2.9
86.0					85.0m× 2.1	2.1	2.4	2.7	2.2	1.8							1.6	1.9	2.0	2.5
88.0						2.0	2.4	2.2	1.8									1.7	2.1	2.0
90.0						1.7	2.0	2.0	1.8										1.7	1.7
No. of Part line	2	2	2	1	1	1	1	1	1	1	2	2	2	1	1	1	1	1	1	1

(Note)

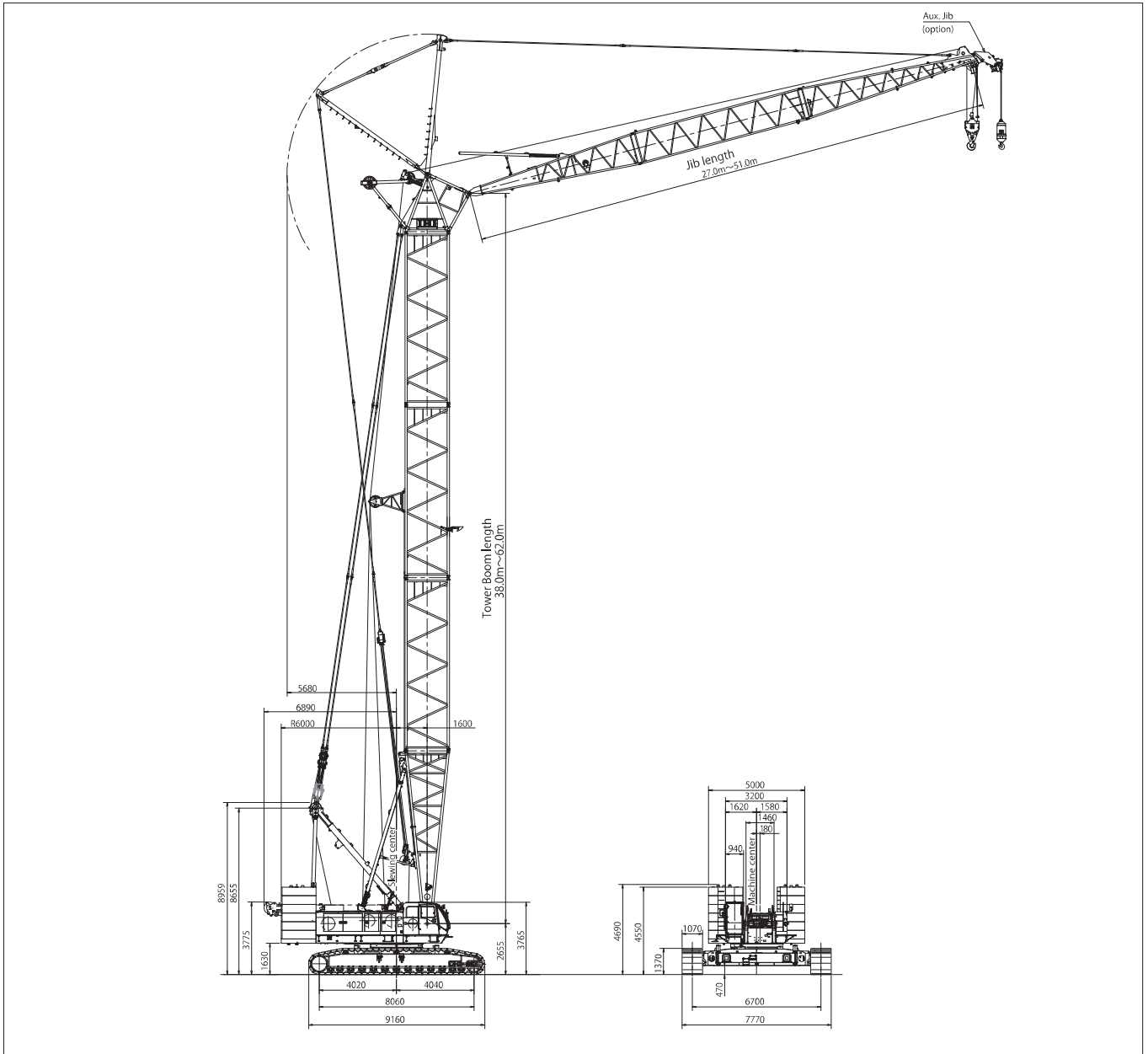
1. RATED LOADS ARE ACCORDING TO EN13000 , AND FOR FULL SWINGING OF 360° ON A FIRM LEVEL GROUND.
2. THE WORKING RADIUS REFERS TO THE HORIZONTAL DISTANCE FROM THE CENTER OF SWINGING TO THE HOOK AXIS.
3. THE ACTUAL LIFTING LOAD IS OBTAINED BY SUBTRACTING THE MASS OF ALL LIFTING EQUIPMENT SUCH AS THE MAIN MAIN HOOK,AUX. HOOK,ETC. FROM THE VALUES GIVEN IN THIS TABLE.

250t Hook...3.5t	135t Hook...2.9t	90t Hook...1.6t	35t Hook...1.1t
200t Hook...3.0t	125t Hook...2.4t	60t Hook...1.4t	13.5t Hook...0.6t

LUFFING TOWER CRANE

Dimensions / Specifications

(unit : mm)



CCH2500 Main Specifications

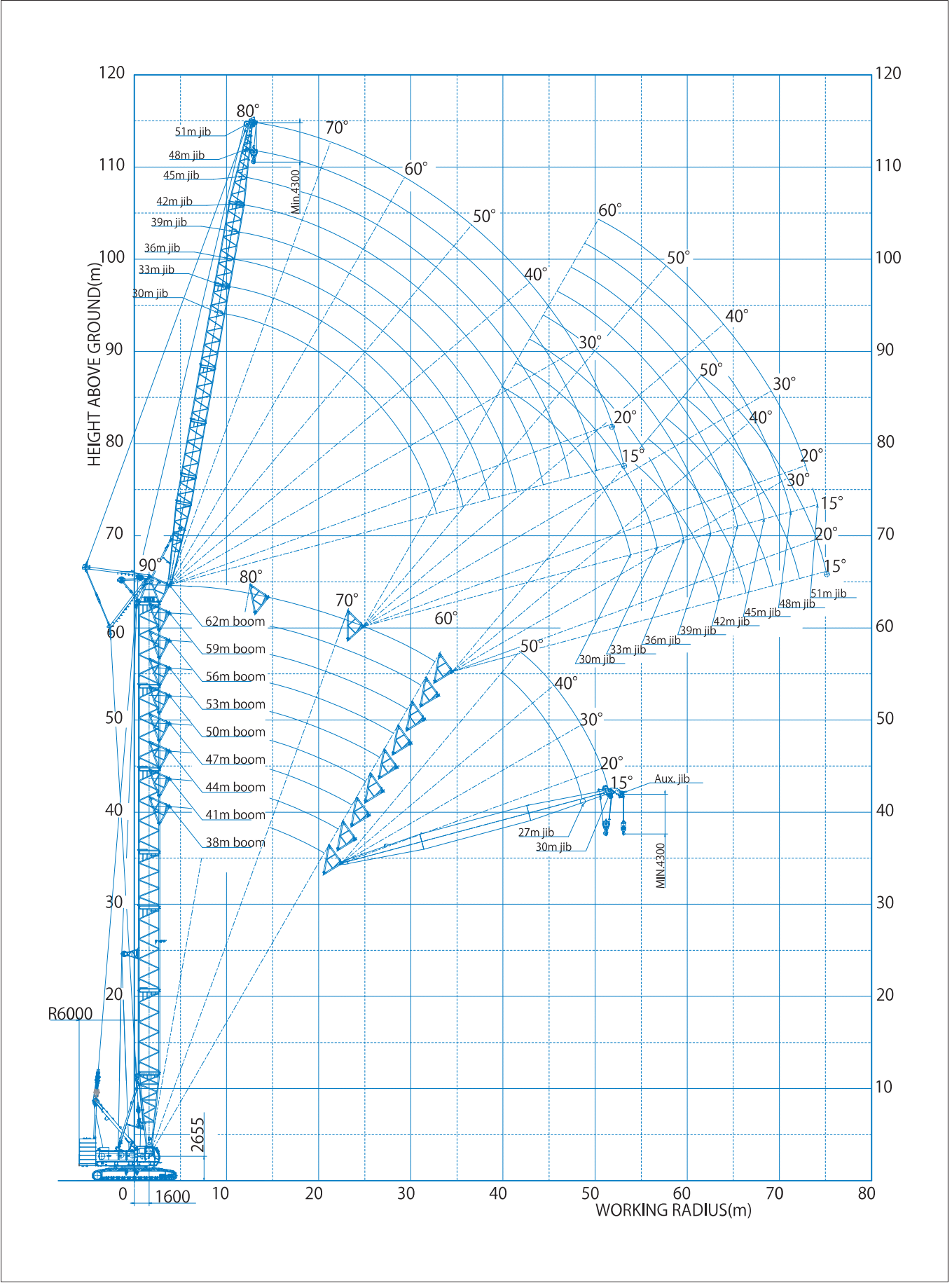
PERFORMANCE		
Slewing speed	1.5min ⁻¹ (constant speed 0.6min ⁻¹)	
Travel speed	※ 0.9/0.6 km/h	
Grade ability	30% (16.7°)	
Engine	Manufacturer	Cummins Inc.
	Model	QSL9-3A
	Emission Certification	U.S.EPA Tier3,CARB Tier3,EU Stare III A
	Type	4-cycle, water-cooled, turbocharged and air cooled
	Rated output	242kW/2000min ⁻¹
	Total displacement	8.9 L
	Fuel tank capacity	510 L
	Battery	12V × 120AH 2pcs.

Crane Specifications

PERFORMANCE		
Maximum lifting capacity × working radius	35ton × 10.0m	
Tower Boom length	38~62m	
Tower Jib length	27~51m	
Max. boom and jib length	113m(62m Tower Boom + 51m Jib)	
Rope speed	hoisting/lowering:	※ 120m/min
	Boom hoisting/lowering	※ 34m/min × 2
	Jib hoisting/lowering	※ 75 m/min
Rope part lines	35t hook	3 part lines
	13.5t hook	1 part line
	Boom hoist	20 part lines
	Jib hoist	10 part lines
Standard counterweight	92.0 ton	
Carbody weight:	19.0 ton	
Crane total weight	Approx. 236 ton(62m boom and 51m jib)	
Average ground bearing pressure	126 kPa (1.28 kgf/cm ²)	

※ The value marked with “※” will be changed according to the loads given

Working Ranges Diagram



LUFFING TOWER CRANE

Tower Boom and Jib combination

Tower Boom and Jib combination

Tower Boom length (m)	Tower Jib length (m)								
	27	30	33	36	39	42	45	48	51
38.0	◎*1*2	◎*2							
41.0	◎*1*2	◎*2	◎*2						
44.0	◎*1*2	◎*2	◎*2	◎*2					
47.0	◎*1*2	◎*2	◎*2	◎*2	◎*2				
50.0		◎*1	◎	◎	◎	◎			
53.0		◎*1	◎	◎	◎	◎	◎		
56.0		◎*1	◎	◎	◎	◎	◎	◎	
59.0		◎*1	◎	◎	◎	◎	◎	◎	◎
62.0		◎*1	◎	◎	◎	◎	◎	◎	◎

◎ : Tower Boom angle 90° ~60°

○ : Tower Boom angle 90° ~70°

*1 : Use of 1 part of line is no allowed.

*2 : 35ton hook can be used with 3 parts of line.

When the tower boom is 62m, the TW-Aux jib cannot be mounted to the tower jib.

Wire Rope

Purpose	Rope dia (mm)	Breaking Strength(kN)	Rope Type
Load hoisting	φ 28	688	P·S (19) +39×P·7
Aux. jib load hoisting	φ 28	688	P·S (19) +39×P·7
Boom hoisting	φ 22.4	356	IWRC 6×WS (31)
Jib hoisting	φ 22.4	356	IWRC 6×WS (31)
Boom suspension	φ 36	1150	IWRC 6×P·WS (36)
Jib boom suspension	φ 36	1150	IWRC 6×P·WS (36)
Jib strut suspension	φ 36	1150	IWRC 6×P·WS (36)

Attachment Arrangement

As for the case with two kinds of mentions, the combination of the upper section is recommended boom constitution.

Tower boom arrangement

Boom length (m)	Tower boom arrangement
38	
41	
44	
47	
50	
53	

9R : 9m insert boom with rail

9S : 9m insert boom with guide sheave

Attachment Arrangement

As for the case with two kinds of mentions, the combination of the upper section is recommended boom constitution.

Tower boom arrangement

Boom length (m)	Tower boom arrangement
56	
59	
62	

9R : 9m insert boom with rull

9S : 9m insert boom with guide sheave

Tower jib arrangement

Jib length (m)	Tower jib arrangement
27	
30	
33	
36	
39	
42	
45	
48	
51	

※○mark : Normal guide-roller position ☆mark : Additional guide-roller position

LUFFING TOWER CRANE

TOWER CRANE RATED LIFTING LOADS

TOWER JIB RATED LIFTING LOADS (92t Counterweight + 19t Carbody weight)

(unit : ton) (Note)

Boomlength(m)	38.0							
Jiblength(m)	27.0				30.0			
Tower boom angle Working radius(m)	90°	80°	70°	60°	90°	80°	70°	60°
8.0	8.7m× 35.0							
9.0	35.0				9.2m× 35.0			
10.0	35.0				35.0			
12.0	32.8				31.6			
14.0	30.8				29.2			
16.0	28.8				27.0			
18.0	26.7	19.7m× 25.3			25.3			
20.0	24.7	25.0			23.9	20.8m× 23.4		
22.0	23.3	23.3			22.8	22.8		
24.0	21.1	21.4			21.2	21.5		
26.0	19.0	19.5			18.9	20.4		
28.0	16.8	18.0			17.2	19.2		
30.0	29.6m× 15.8	16.7	30.2m× 15.6		15.9	17.8	31.7m× 15.7	
32.0		15.6	15.6		13.5	16.5	16.5	
34.0		14.4	14.5		32.5m× 12.7	15.1	15.2	
36.0		13.5	13.5		★33.1m× 11.8	14.0	14.0	
38.0		36.2m× 13.4	12.6	39.8m× 11.7		12.9	13.0	
40.0			11.7	11.6		39.0m× 12.6	12.1	41.8m× 11.0
42.0			11.1	11.0		★39.7m× 12.1	11.2	10.9
44.0			42.5m× 10.3	10.4			10.5	10.4
46.0				9.8		45.3m× 10.1	9.8	
48.0				9.3		★46.0m× 9.9	9.3	
50.0				48.3m× 9.2			8.8	
52.0							51.2m× 8.5	
54.0							★51.8m× 8.2	
56.0								
58.0								

- 1.THE VALUES OF RATED LOAD GIVEN IN THIS TABLE ARE THE LOAD OF WITHIN 75% OF TIPPING LOAD AND WITH THE FORWARD STABILITY OF 1.15 OR HIGHER FOR FULL SWINGING OF 360 DEGREES ON A FIRM LEVEL GROUND.
- 2.THE FIGURE ENCLOSED WITHIN BOLD LINES IN THIS TABLE ARE THE VALUES DETERMINED BASED ON THE STRENGTH OF THE BOOM,ETC
- 3.THE WORKING RADIUS REFERS TO THE HORIZONTAL DISTANCE FROM THE CENTER OF SWINGING TO THE HOOK AXIS.
- 4.FOR THE OPERATION, BE SURE TO RAISE THE A-FRAME.
- 5.IN THE CASE OF THE 27m TOWER JIB OR THE 30m TOWER JIB WITH A TOWER BOOM OF 50m~62m,THE LIFTING WORK CAN NOT BE DONE WITH 1 PART OF LINE.
- 6.WHEN THE TOWER BOOM IS 62m,THE TW-AUX. JIB CAN NOT BE MOUNTED TO THE TOWER JIB.
- 7.THE ANGLE FORMED BY THE CENTER LINE OF POST AND TOWER JIB (OFFSET ANGLE) SHOULD NOT BE ALWAYS BELOW 10 DEGREES.
- 8.THE ANGLE FORMED BY THE CENTER LINE OF TOWER JIB AND THE HORIZONTAL SHOULD NOT BE BELOW 15 DEGREES IN CASE OF LIFTING WORK.
- 9.THE ACTUAL LIFTING LOAD IS OBTAINED BY SUBTRACTING THE MASS OF ALL LIFTING EQUIPMENT SUCH AS THE MAIN HOOK,AUX. HOOK,ETC. FROM THE VALUES GIVEN IN THIS TABLE.
35ton HOOK···1.1ton 13.5ton HOOK···0.6ton
- 10.WHEN THE TW-AUX. JIB IS MOUNTED, THE RATED LOAD WITH TOWER JIB IS OBTAINED BY SUBTRACTING 1.0t (INCLUDING THE MASS OF THE AUX. HOOK) FROM THE VALUES GIVEN IN THIS TABLE.
- 11.THE RATED LOAD OF THE TW-AUX. JIB IS OBTAINED BY SUBTRACTING 0.5t FROM THE VALUES GIVEN IN THIS TABLE CORRESPONDING TO THE LENGTH OF THE MOUNTED TOWER JIB,BUT THE MAX. RATED LOAD IS 13.5ton.
- 12.THE RATED LOAD ARE LIMITED ACCORDING TO THE WIRE ROPE PART LINE AS SHOWN BELOW:
1 PART OF LINE ···UP TO 13.5ton 2 PARTS OF LINE ···UP TO 25.0ton
3 PARTS OF LINE ···UP TO 35.0ton
- 13.THE WORKING RADIUS MARKED WITH AN ASTERISK(★) IN THIS TABLE INDICATES THE MAXIMUM WORKING RADIUS WHEN THE WIRE ROPE PART LINE IS 1 PART OF LINE.

TOWER JIB RATED LIFTING LOADS (92t Counterweight + 19t Carbody weight)

(unit : ton)

Boomlength(m)	41.0											
Jiblength(m)	27.0				30.0				33.0			
Tower boom angle Working radius(m)	90°	80°	70°	60°	90°	80°	70°	60°	90°	80°	70°	60°
8.0	8.7m× 35.0											
9.0	35.0				9.2m× 32.2				9.8m× 31.0			
10.0	35.0				32.2				31.0			
12.0	32.6				30.3				29.4			
14.0	30.1				28.4				27.8			
16.0	27.7				26.5				26.2			
18.0	25.9				25.0				24.8			
20.0	24.4	20.3m× 24.2			23.9	21.3m× 23.2			23.5			
22.0	23.3	23.4			22.8	22.8			22.4	22.3m× 22.2		
24.0	21.1	21.4			21.2	21.5			21.1	21.2		
26.0	19.3	19.9			19.2	20.4			18.8	19.8		
28.0	16.8	18.3			17.6	19.2			17.0	18.4		
30.0	29.6m× 15.8	16.8	31.2m× 15.0		16.3	17.8			15.7	17.1		
32.0		15.3	15.5		13.5	16.5	32.7m× 15.0		14.5	15.9		
34.0		14.1	14.2		32.5m× 12.7	15.1	15.2		13.2	14.6	34.2m× 14.3	
36.0		13.0	13.1		★33.1m× 11.8	14.0	14.0		38.4m× 11.0	13.6	13.3	
38.0		36.7m× 12.7	12.3			12.9	13.0		★38.0m× 10.0	12.5	12.2	
40.0			11.6	41.3m× 11.9		39.6m× 12.2	12.1			11.6	11.4	
42.0			11.0	11.0		★40.2m× 11.6	11.0	43.3m× 10.4		10.9	10.8	
44.0			43.5m× 10.8	10.3			10.2	10.2		42.5m× 10.8	10.2	45.2m× 9.8
46.0				9.7			9.7	9.6		★43.1m× 10.8	9.6	9.6
48.0				9.3			46.4m× 9.6	9.1			9.1	9.1
50.0				49.8m× 9.8			★47.0m× 9.4	8.6			49.3m× 9.8	8.6
52.0								8.1			★49.9m× 8.7	8.1
54.0								52.7m× 8.0				7.7
56.0								★53.3m× 7.7				56.8m× 7.4
58.0												★56.2m× 7.2

TOWER CRANE RATED LIFTING LOADS

TOWER JIB RATED LIFTING LOADS (92t Counterweight + 19t Carbody weight) (unit : ton)

Boomlength(m)		56.0															
Jiblength(m)		30.0				33.0				36.0				39.0			
Tower boom angle		90°	80°	70°	60°	90°	80°	70°	60°	90°	80°	70°	60°	90°	80°	70°	60°
Working radius(m)	9.0	9.2m×25.0				9.8m×25.0											
	10.0	25.0				25.0				10.3m×25.0				10.8m×24.5			
	12.0	25.0				25.0				25.0				24.0			
	14.0	25.0				25.0				25.0				23.2			
	16.0	25.0				25.0				24.5				22.4			
	18.0	24.5				24.5				23.6				21.6			
	20.0	23.8				23.4				22.4				20.9			
	22.0	22.8	23.9m×21.6			22.4				21.3				20.2			
	24.0	21.5	21.5			21.2	24.9m×20.6			20.1				19.4			
	26.0	19.8	20.4			19.5	19.8			18.9	26.0m×19.0			18.5	27.0m×17.8		
	28.0	18.2	19.2			17.8	18.4			17.5	18.0			17.1	17.2		
	30.0	16.6	17.8			16.5	17.2			16.2	16.9			15.5	16.1		
	32.0	13.5	16.5			15.2	16.1			14.9	15.9			14.2	15.1		
	34.0	15.1				13.9	14.9			13.8	14.7			13.0	14.1		
	36.0	14.0	37.9m×12.6			13.8	13.8			12.7	13.8			11.9	13.2		
	38.0	12.9	12.5			★36.0m×11.3	12.6	39.4m×11.2		10.6	12.6			10.9	12.2		
	40.0	12.0	11.7			11.7	11.3			38.3m×10.3	11.7	40.9m×11.1		10.1	11.3		
	42.0	11.1	11.0			11.0	10.8			★38.9m×9.6	11.0	10.8		41.2m×8.8	10.4	42.4m×10.3	
	44.0	10.2	10.2			10.4	10.2				10.3	10.2		★41.8m×7.9	9.8	9.9	
	46.0	9.7				45.1m×10.1	9.6			9.7	9.6			9.2	9.3		
	48.0	9.2				★45.7m×9.8	9.1			48.0m×9.1	9.0			8.5	8.8		
	50.0	8.7	50.9m×7.9				8.6			★48.6m×8.8	8.5			8.0	8.4		
	52.0	7.7	51.6m×8.2			7.7	8.1	52.7m×7.7		8.1				50.9m×7.8	8.0		
	54.0	7.4				7.4	7.6	7.3			7.7	54.6m×6.8		★51.6m×7.6	7.6		
	56.0	7.0				7.0	7.0	6.8			7.3	6.6		7.2	6.7	56.5m×6.7	
	58.0	6.7				6.7	6.5	6.5			57.2m×7.0	6.3		6.8	6.4		
	60.0	6.3				6.3	6.1	6.1			★58.0m×6.8	6.0		6.5	6.2		
	62.0					60.2m×6.2	5.8	5.8				5.7		60.2m×6.4	5.8		
	64.0									63.1m×5.7		5.5		★60.8m×6.2	5.5		
	66.0									★63.7m×5.5					5.2		
	68.0													★66.5m×5.0	4.9		
	70.0														68.9m×4.8		
	72.0														★69.5m×4.6		
	74.0																
	76.0																
	78.0																
	80.0																

TOWER JIB RATED LIFTING LOADS (92t Counterweight + 19t Carbody weight) (unit : ton)

Boomlength(m)		56.0											
Jiblength(m)		42.0				45.0				48.0			
Tower boom angle		90°	80°	70°	60°	90°	80°	70°	60°	90°	80°	70°	60°
Working radius(m)	9.0												
	10.0	11.3m×23.3											
	12.0	23.0								12.4m×18.4			
	14.0	22.2								17.9			
	16.0	21.4								17.3			
	18.0	20.6								16.7			
	20.0	19.8								16.0			
	22.0	18.9								15.4			
	24.0	18.1								14.8			
	26.0	17.3								14.2			
	28.0	16.5	28.0m×16.7			15.3	29.0m×15.2			13.5			
	30.0	15.3	15.5			14.6	14.8			12.9	30.1m×13.5		
	32.0	14.1	14.5			13.9	14.1			12.2	12.8		
	34.0	12.9	13.6			12.7	13.0			11.7	12.3		
	36.0	11.9	12.8			11.7	12.2			11.1	11.4		
	38.0	11.0	11.8			10.8	11.4			10.2	10.7		
	40.0	10.0	10.9			9.9	10.7			9.6	10.1		
	42.0	9.2	10.0			9.1	9.8			8.8	9.4		
	44.0	8.4	9.4	43.9m×9.4		8.4	9.2	45.4m×8.8		8.2	8.8		
	46.0	8.2	8.8	8.9		7.6	8.6	8.6		7.6	8.2	46.9m×8.0	
	48.0	★44.7m×8.3	8.1	8.5		47.0m×7.1	7.9	8.1		7.0	7.5	7.7	
	50.0	★44.7m×7.7	7.6	8.1		★47.6m×6.8	7.4	7.6		48.9m×6.4	7.0	7.3	
	52.0		7.2	7.7			7.0	7.2		★50.5m×5.9	6.6	6.9	
	54.0		53.9m×6.8	7.3			6.6	6.9			6.2	6.6	
	56.0		★54.4m×6.7	6.9			6.2	6.6			5.8	6.3	
	58.0			6.5	58.5m×6.0		56.7m×6.1	6.3			5.5	6.0	
	60.0			6.3	5.8		★57.3m×6.0	6.1	60.4m×5.4		59.6m×5.3	5.8	
	62.0			6.0	5.6			5.8	5.2		★60.2m×5.2	5.5	62.3m×5.1
	64.0			63.1m×5.8	5.3			5.5	5.0			5.2	4.9
	66.0			★63.7m×5.6	5.0			66.0m×5.3	4.8			5.0	4.7
	68.0				4.8			★66.6m×5.2	4.5			4.8	4.4
	70.0				4.6				4.3			68.9m×4.7	4.2
	72.0				71.8m×4.3				4.1			★69.5m×4.6	4.0
	74.0				★72.4m×4.2				3.9				3.7
	76.0								74.7m×3.8				3.5
	78.0								★75.3m×3.7				77.8m×3.4
	80.0												★78.2m×3.3

TOWER CRANE RATED LIFTING LOADS

TOWER JIB RATED LIFTING LOADS (92t Counterweight + 19t Carbody weight) (unit : ton)

Boomlength(m)	62.0															
Jiblength(m)	30.0				33.0				36.0				39.0			
Tower boom angle	90°	80°	70°	60°	90°	80°	70°	60°	90°	80°	70°	60°	90°	80°	70°	60°
9.0	9.2m×25.0				9.8m×25.0											
10.0	25.0				25.0				10.3m×25.0				10.8m×24.4			
12.0	25.0				25.0				25.0				23.9			
14.0	25.0				25.0				25.0				23.1			
16.0	25.0				24.8				24.3				22.3			
18.0	24.3				24.0				23.4				21.5			
20.0	23.6				22.9				22.3				20.8			
22.0	22.8				21.8				21.3				20.1			
24.0	21.5				20.6				20.1				19.3			
26.0	19.8	24.9m×21.0			19.4	26.0m×19.5			18.9	27.0m×18.6			18.5			
28.0	18.2	19.2			17.8	18.3			17.5	18.0			17.1	28.0m×17.2		
30.0	16.6	17.8			16.6	17.2			16.3	16.9			15.5	16.1		
32.0	13.5	16.5			15.3	16.1			15.1	15.9			14.2	15.1		
34.0	32.5m×14.1	15.1			13.9	14.9			13.9	14.7			13.0	14.1		
36.0		14.0			35.4m×13.2	13.8			12.7	13.8			11.9	13.2		
38.0		12.9	39.9m×11.7		★36.0m×11.3	12.6			10.6	12.6			11.0	12.2		
40.0		12.0	11.7		11.7	41.4m×10.9			38.3m×10.3	11.7			10.2	11.3		
42.0		11.1	11.0		11.0	10.7			★38.9m×9.9	11.0	42.9m×10.4		41.2m×8.8	10.4		
44.0		43.2m×10.7	10.2		10.4	10.2				10.4	10.2		★41.8m×7.9	9.8	44.4m×9.7	
46.0			9.7		9.8	9.6				9.8	9.6			9.2	9.2	
48.0			9.2		46.1m×9.8	9.1				9.3	9.0			8.5	8.7	
50.0			8.7		★46.8m×9.6	8.6				49.0m×9.0	8.5			8.0	8.3	
52.0			8.2	53.9m×7.0		8.1				★49.7m×8.7	8.1			51.9m×7.6	7.9	
54.0			53.6m×7.8	7.0		7.6	55.7m×6.3				7.7			★52.6m×7.4	7.5	
56.0				6.7		7.0	6.3				7.3	57.6m×6.0			7.1	
58.0				6.3		56.5m×6.9	5.9				6.8	5.9			6.7	59.5m×5.4
60.0				6.0		★57.1m×6.7	5.7				59.4m×6.5	5.6			6.4	5.4
62.0				5.7			5.5				★60.0m×6.2	5.4			6.1	5.2
64.0							5.3					5.2			62.2m×5.7	5.0
66.0				63.2m×5.5			4.9					5.0			★62.9m×5.8	4.8
68.0							66.1m×4.9					4.7				4.5
70.0							★66.7m×4.7					69.0m×4.6				4.2
72.0												★69.6m×4.4				71.9m×4.1
74.0																★72.5m×4.0
76.0																
78.0																
80.0																
82.0																
84.0																

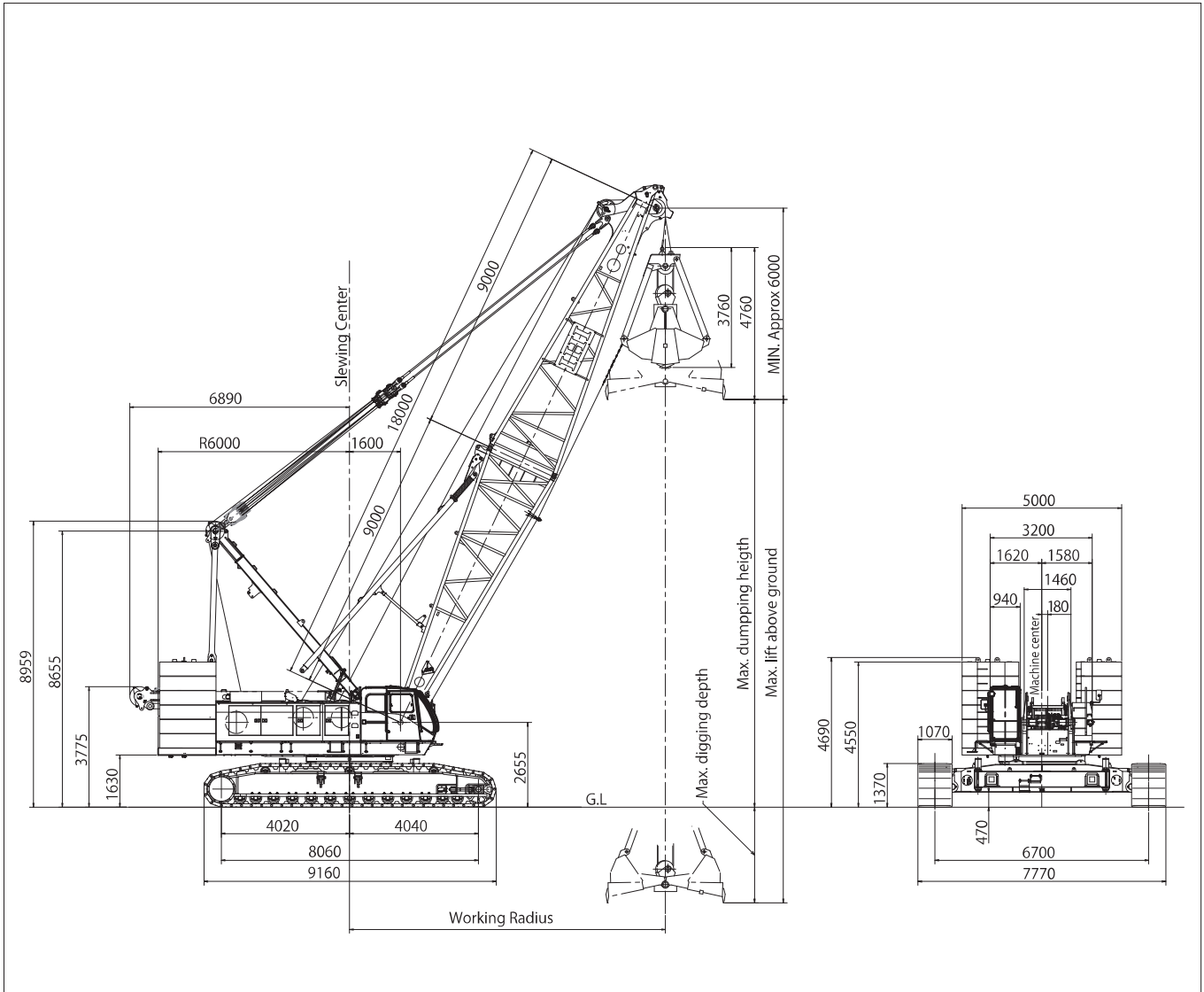
TOWER JIB RATED LIFTING LOADS (92t Counterweight + 19t Carbody weight) (unit : ton)

Boomlength(m)	62.0														
Jiblength(m)	42.0				45.0				48.0				51.0		
Tower boom angle	90°	80°	70°	60°	90°	80°	70°	60°	90°	80°	70°	60°	90°	80°	70°
9.0															
10.0	11.3m×23.3														
12.0	23.0				11.9m×20.8				12.4m×17.7				12.9m×16.9		
14.0	22.2				20.1				17.2				16.6		
16.0	21.4				19.4				16.7				16.1		
18.0	20.6				18.7				16.1				15.6		
20.0	19.8				18.0				15.5				15.0		
22.0	18.9				17.3				15.0				14.5		
24.0	18.1				16.6				14.4				14.0		
26.0	17.3				15.9				13.8				13.4		
28.0	16.5	29.0m×15.9			15.3				13.3				12.9		
30.0	15.3	15.3			14.6	30.1m×14.6			12.7	31.1m×12.9			12.4		
32.0	14.1	14.5			13.7	14.1			12.2	12.2			11.9	32.1m×11.8	
34.0	12.9	13.6			12.7	13.0			11.7	11.7			11.0	11.5	
36.0	11.9	12.8			11.7	12.2			11.0	11.3			10.1	11.0	
38.0	11.0	11.8			10.6	11.4			10.1	10.6			9.5	10.3	
40.0	10.0	10.9			9.7	10.7			9.5	10.0			8.8	9.7	
42.0	9.2	10.0			9.1	9.8			8.8	9.3			8.2	9.0	
44.0	8.4	9.4	45.9m×9.0		8.2	9.2			8.0	8.7			7.7	8.4	
46.0	44.1m×8.3	8.8	9.0		7.4	8.6	47.4m×8.2		7.4	8.1			7.2	7.9	
48.0	★44.7m×7.7	8.1	8.5		47.0m×8.9	8.1	8.1		6.9	7.5	48.9m×7.3		6.6	7.4	
50.0		7.6	8.1		★47.6m×8.6	7.4	7.6		48.9m×8.5	7.0	7.1		6.1	6.9	50.4m×6.8
52.0		7.2	7.7			7.0	7.2		★50.5m×8.7	6.6	6.8		5.7	6.3	6.5
54.0		6.8	7.3			6.6	6.9			6.1	6.6		52.8m×5.5	5.8	6.3
56.0		54.9m×6.6	6.9			6.2	6.6			5.8	6.3		★63.4m×5.2	5.5	6.0
58.0		★55.5m×6.5	6.5			57.7m×6.0	6.3			5.5	6.0			5.2	5.7
60.0			6.3	61.5m×5.3		★58.4m×5.8	6.1			52	5.8			4.9	5.5
62.0			5.9	5.2		5.8	63.4m×4.8			60.8m×5.1	5.5			4.7	5.2
64.0			5.6	5.0		5.5	4.7			★61.3m×5.0	5.2	65.3m×4.1		63.5m×4.5	4.9
66.0				65.1m×5.4		5.3	4.5				5.0	4.0		★64.2m×4.3	4.7
68.0			★65.8m×5.3	4.5		68.0m×5.1	4.2				4.9	3.8			4.6
70.0				4.2		★69.7m×5.0	4.0				4.6	3.6			4.4
72.0				3.9			3.8								4.2
74.0				3.7			3.6				70.9m×4.5	3.4			73.8m×3.6
76.0					74.8m×3.6		3.4				★71.6m×4.3	3.2			★74.9m×3.3
78.0				★75.4m×3.5			77.7m×3.2					3.0			
80.0							★78.3m×3.1					2.8			
82.0												80.6m×2.6			
84.0												★81.2m×2.4			

CLAMSHELL SPECIFICATION

Dimensions / Specifications

(unit : mm)



CCH2500 Main Specifications

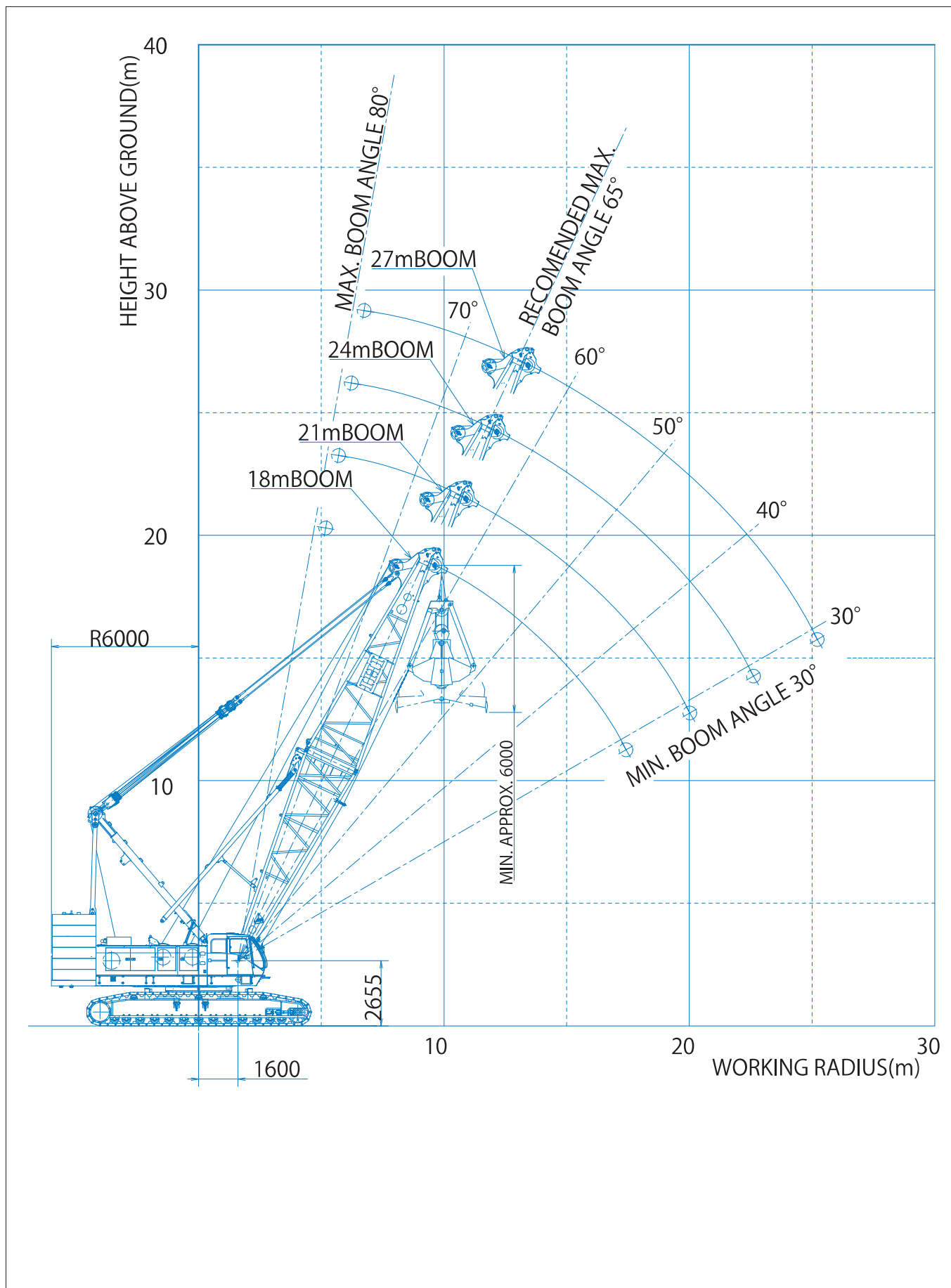
PERFORMANCE		
Slewing speed	1.5min ⁻¹ (constant speed 0.6min ⁻¹)	
Travel speed	※ 0.9/0.6 km/h	
Grade ability	30% (16.7°)	
Engine	Manufacturer	Cummins Inc.
	Model	QSL9-3A
	Emission Certification	U.S.EPA Tier3,CARB Tier3,EU Stare III A
	Type	4-cycle, water-cooled, turbocharged and air cooled
	Rated output	242kW/2000min ⁻¹
	Total displacement	8.9 L
	Fuel tank capacity	510 L
	Battery	12V × 120AH 2pcs.

Clamshell Specifications (Special specifications)

PERFORMANCE		
Maximum lift above ground	46.0m (18m Boom+2.5m ³ Bucket)	
Rope speed	Bucket closing	※ 120m/min
	Bucket holding	※ 120m/min
Rope part lines	Boom hoisting/lowering	※ 34m/min × 2
	Bucket closing	6 part lines (for all types bucket)
Rope part lines	Bucket holding	1 part line (for all types bucket)
	Boom hoist	20 part lines
Maximum lifting capacity	12.5 ton (Bucket weight+Load)	
Standard counterweight	92.0 ton	
Carbody weight	19.0 ton	
Crane total weight	Approx.211 ton (18m Boom+2.5m ³ Bucket)	
Average ground bearing pressure	113 kPa (1.15 kgf/cm ²)	

※The value marked with "※" will be changed according to the loads given.

Clamshell Working Ranges Diagram



CLAMSHELL SPECIFICATION

Clamshell Bucket Specification

Clamshell Bucket Specification

Classifications	Capacity (m ³)	Weight (ton)	Classifications
Heavy digging (Dredging)	2.0	6.5	Option
General digging · Heavy duty	2.5	5.5	Standard
Medium duty	3.0	5.0	Option
Light duty	4.0	4.5	Option
Light duty	5.0	4.0	Option

Wire Rope

Purpose	Rope dia (mm)	Breaking Strength(kN)	Rope Type
Bucket closing	φ 28	585	IWRC 6×Fi (29)
Bucket suspension	φ 28	585	IWRC 6×Fi (29)
Boom hoist	φ 22.4	356	IWRC 6×WS (31)
Boom suspension	φ 36	1150	IWRC 6×P·WS (36)
Hydraulic tugline	φ 10	54	6×19

Working Radius And Rated Loads

Boom length(m)	18				21				24				27			
	35	45	55	65	35	45	55	65	35	45	55	65	35	45	55	65
Working radius(m)	16.9	14.9	12.6	9.9	19.3	17.1	14.3	11.2	21.8	19.2	16.0	12.4	24.3	21.3	17.7	13.7
Rated lifting loads (ton)	12.5	12.5	12.5	12.5	12.5	12.5	12.5	12.5	12.5	12.5	12.5	12.5	12.5	12.5	12.5	12.5
Boom point height(m)	12.6	15.1	17.1	18.8	14.3	17.2	19.6	21.5	16.0	19.3	22.1	24.2	17.8	21.4	24.5	26.9
Max. dumping height (m)	6.6	9.1	11.1	12.8	8.3	11.2	13.6	15.5	10.0	13.3	16.1	18.2	11.8	15.4	18.5	20.9
Max. digging depth (m)	39.4	36.9	34.9	33.2	37.7	34.8	32.4	30.5	36.0	32.7	29.9	27.8	34.2	30.6	27.5	25.1

Note:

1. The maximum boom length is 27 meters.
2. The rated lifting load indicates the maximum lifting weight of a bucket and its content. Select an appropriate bucket depending on content, so as not to exceed the rated lifting load.
3. The working radius refers to the horizontal distance from the center of swinging to the vertical line through the center of the bucket.
4. Maximum dumping height depends on the height of a bucket attached. In the chart, top clearance of 6 meters is assumed.
5. Maximum digging depth is the value calculated by subtracting maximum dumping height from the maximum lifting range of 46 meters.
6. The aux. jib cannot be used for bucket work.
7. When lowering a bucket using half brake, ensure that the drop height is about 10 meters or less. Use powered lowering as well as free fall when the drop height is higher than 10 meters.
8. The maximum weight of a bucket is 6.5 tons, but it is necessary to use a lighter bucket depending on work cycle and drop height.
9. Avoid sudden acceleration or deceleration while slewing the machine, which would apply dragging the load sideway to the boom. Be careful especially when a longer boom is used.

STANDARD EQUIPMENT

■ Safety Devices

- Moment Limiter :Over-load prevention device.
Alarm at 90%,automatic stop at 100%
- Hook over-winding :Alarm and automatic stopper
- Boom over-hoisting :Automatic stopper
- Boom 2nd over-hoisting :All winch function(non resetable)
- Boom backstopper :Double-stem telescopic
- Swing lock :Pin-lock type
- Main and Auxiliary drum lock :Pawl type
- Boom hoisting drum lock :Pawl type
- Lever lock :Remote control circuit line cut off
- Automatic brake system
- Slewing warning buzzer(with voice alarm)
- Travel warning buzzer(with voice alarm)
- Engine start voice alarm · Switch of emergency stop the engine
- Hydraulic safety valves

■ Instrument

- Tachometer(displayed by Moment Limiter)
- Hour meter
- Hydraulic pressure gauge for control circuit
- Fuel level gauge
- Engine coolant temperature gauge(indicated by OK monitor)
- Engine diagnostic monitor

■ Auxiliary DEVICE

- Speed control for slewing
- Speed control for winch
- Pump power shift device
- Remote controller for jack and crawler connect cylinder

■ Lighting

- Work light :24V x 80W
- Room light :24V x 10W

■ Others

- Air conditioner
- Front windshield wiper
- Ceiling wiper
- Sun shade
- Sun visor
- Storage pouch
- Tool box
- Reclining operator's seat
- Floor mat
- Step for operator's cab(retractable type)
- Radio
- Cigarette lighter
- Rear view mirrors(on both sides)
- Warning horn
- Electric fuel pump
- "A" frame hoist cylinders
- Bronze tinted glass
- Footrest
- Electric engine throttle control grip
- Engine throttle pedal
- Loud speaker
- Foot-pin cylinders
- Crawler connect cylinder
- Rope guide roller on the boom back(for outer boom)

OPTIONAL SPECIFICATIONS

■ Additional Device

- 3rd hoisting winch(no free fall)
- Main/Auxiliary hoisting winch with free fall(with mode selector)
- Reeving winch combined use tagline
- Tagline
- Drum rotation indication
- Monitor TV(for rear/drum view)
- Monitor TV(for hook/load)
- Mirror for drum
- Combustion type heater
- Fire extinguisher
- Operator cabin roof guard
- Planking (case for erect the boom)

■ Light And Instrument

- Yellow rotary light
- Airplane warning light
- Over load outside alarm light(red/yellow/green)
- Work light for drum
- Work light on boom
- Hand light
- Back light
- Level
- Anemometer

■ Step And Guard

- Cat walk(no handrail,for rear cab)
- Handrail for cat walk
- Wire-mesh boom walkway(for inner boom)
- Wire-mesh for boom walkway(for insert boom and outer boom)
- Safety guard on cab (handrail)
- Safety guard rope on main boom (stanchion rope)

■ Attachment

- 3m,6m,9m insert boom(with pendant rope and guide roller)
- Taper insert boom of light boom and 3m,6m insert jib(with tower)
- 13m basic jib and 6m insert jib(with pendant rope and guide roller)
- 3m,6m,9m Insert tower boom and 3m,6m,9m insert tower jib (with pendant rope and guide roller)
- 1m auxiliary jib
- 250/135 ton double hook block (five sheaves and additional sheave-block)
- 200/125 ton double hook block (five sheaves and additional sheave-block)
- 135 ton double hook block(six sheaves)
- 90 ton double hook block(four sheaves)
- 60 ton double hook block(three sheaves)
- 35 ton hook block(one sheave)
- 13.5 ton hook block
- Additional boom point sheave-block (use for over 200tloads)
- Wire rope for front drum "P·S(19)+39×P·7" BS=688kN(use for 200t loads)
- Wire rope for front drum "P·S(19)+39×P·7" BS=755kN(use for 235t loads)
- Wire rope for front drum "IWRC 6×P·WS(36)" (use for over 235t loads)
- Wire rope for rear drum "P·S(19)+39×P·7"
- Lifting peace · Rope guide roller on the boom back

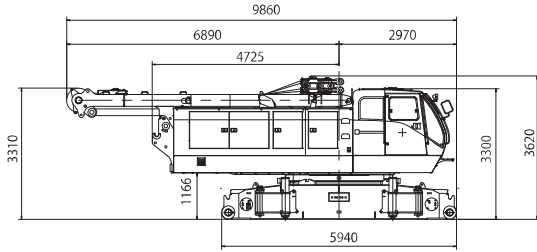
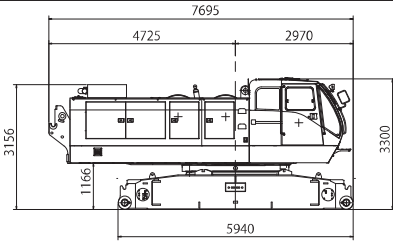
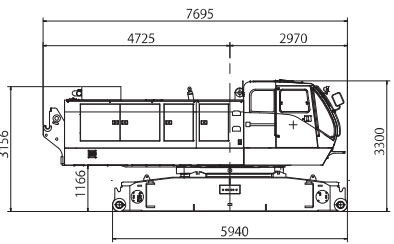
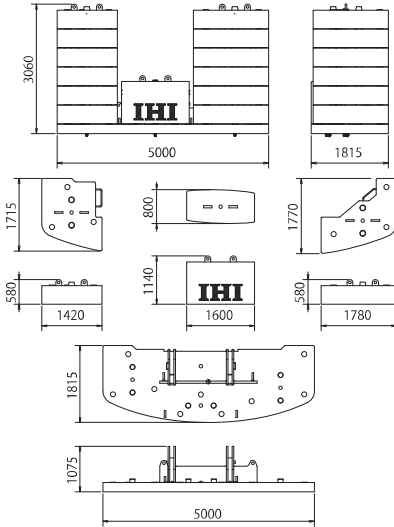
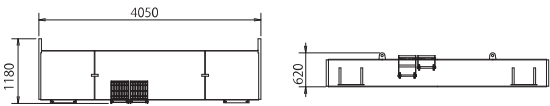
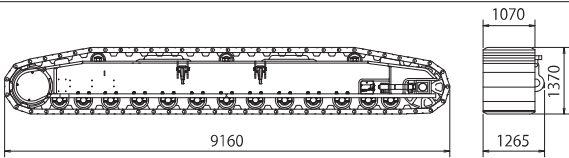
■ Name Plate

- Name plate(both side of base machine)
- Name plate(outer boom or both side of insert boom)

■ Other

- Large size tool box(with caster)
- Sling wire rope(for lifting machine,attachment)
- Lifting pad for crawler

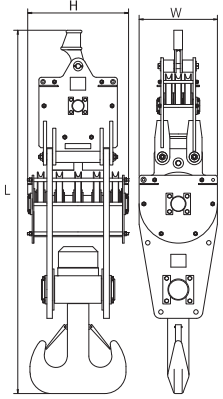
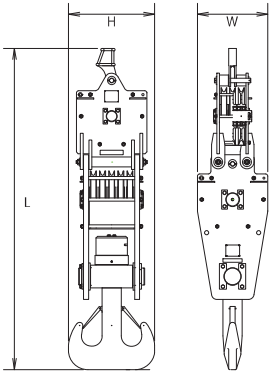
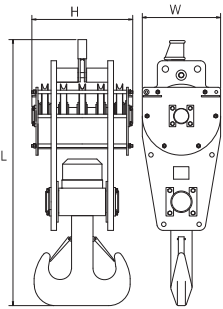
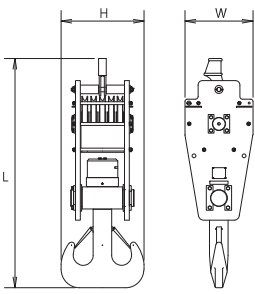
Transport Dimensions and Weights

Name	Dimension (mm)	Q' ty	Weight (ton)
1st Disassembly Base Machine with: Main/Aux. Boom Hoist Drum Main Boom Hoist Wire A-frame Equalizer Jack		1	43.00
2nd Disassembly Base Machine with: Main/Aux. Boom Hoist Drum		1	31.90
3rd Disassembly Base Machine Only		1	27.90
Counterweight Ass' y (6 stage piling) 3,060×1,815×5,000		5	Weight (L) 6.00×6 Weight (C) 8.10×1 Weight (R) 5.60×6 Weight Base 14.30×1 Total 92.00
Carbody Weight 620×1,180×4,050		2	9.50
Crawler Ass' y 1,370×1,265×9,160		2	20.80×2
A-frame	H1095×W1825×L7240 Excluding Hoist Cylinder & Boom Hoisting Wire	1	3.72
Pedestal	□400×485	4	0.04
Jack up	H240×W1050×L1050	4	0.41

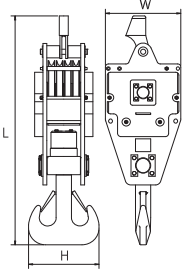
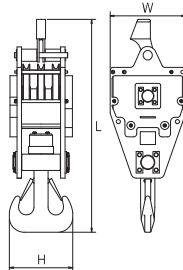
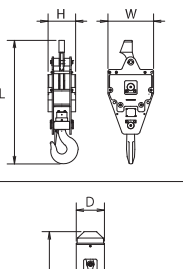
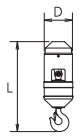
Transport Dimensions and Weights

Crane Boom				
Name	Dimension	Dimension (mm)	Q'ty	Weight (ton)
Inner Boom (CR)		H2675×W2465×L9590	1	4.55
Outer Boom (CR)		H2460×W2355×L9775	1	3.41
Insert Boom (3m)		H2430×W2350×L3135	1	0.78
Insert Boom (6m)		H2430×W2350×L6135	1	1.29
Insert Boom (9m)		H2430×W2350×L9130	1	1.78
Taper Insert Boom		H2525×W2355×L6165	1	1.33
Equalizer		H465×W1140×L2360	1	1.07
Crane Jib				
Name	Dimension	Dimension (mm)	Q'ty	Weight (ton)
1m Aux. Jib		H900×W730×L1650	1	0.33
Inner Jib (w/Strut, for CR Jib)		H1265×W1220×L6920	1	0.96
Outer Jib (for CR Jib)		H1065×W1055×L6865	1	0.46
Insert Jib (6m for CR Jib)		H1085×W1055×L6075	1	0.24
Tower Boom/Jib				
Name	Dimension	Dimension (mm)	Q'ty	Weight (ton)
Tower Inner Boom		H2675×W2465×L9245	1	5.20
Tower Special Insert Boom		H2465×W2355×L9130	1	1.86
Tower Top		H2740×W2430×L3930	1	3.32
Strut		H1150×W2065×L7420	1	2.35
Middle Equalizer		H400×W785×L1450	1	0.35
Inner Jib		H1690×W2500×L9260	1	1.80
Outer Jib (Also for Crane Light Boom)		H1690×W1685×L9650	1	1.36 (Guide Sheave x 1pc) 1.40 (Guide Sheave x 2pcs)
3m Insert Jib (Also for Crane Light Boom)		H1790×W1685×L3090	1	0.31
6m Insert Jib (Also for Crane Light Boom)		H1790×W1685×L6090	1	0.51
9m Insert Jib		H1790×W1685×L9090	1	0.71

Transport Dimensions and Weights

Hook (Crane & Tower)				
Name	Dimension	Dimension (mm)	Q'ty	Weight (ton)
250ton Hook		H990×W770×L3560	1	3.5
200ton Hook		H940×W770×L3510	1	3.0
135ton Hook		H990×W770×L2610	1	2.9
125ton Hook		H940×W770×L2600	1	2.4

Transport Dimensions and Weights

Hook (Crane & Tower)				
Name	Dimension	Dimension (mm)	Q'ty	Weight (ton)
90ton Hook		H690×W740×L2245	1	1.6
60ton Hook		H620×W770×L2085	1	1.4
35ton Hook		H445×W740×L1990	1	1.1
13.5ton Hook		Dφ 460×L1670	1	0.6

Lubricating Oil List

		Volume	Standard Oil Specs
Engine (QSL9-3A)	Engine Oil	TOTAL : 27.0L	Showa Shell Sekyu Shell RimulaX 15W-40 CH-4/CF
		H : 22.7L	
		L : 18.9	
	Coolant	TOTAL : 25.7L	(Anti-freezing 50% Concentration)
Hydraulic Oil Tank	Hydraulic Oil	TOTAL : 630L	Shell Tellus Oil 46
		Tank Level : 330L	
Reduction Gear	Gear Oil		Shell Spirax EP90 API GL-4

PAINTING

Finish painting will be in IHI standard painting color unless otherwise stated in the contract.

【Green】 : Munsell No. 10G6,5/8

【Gray】 : Munsell No. N-3.0

REMARKS

(1) Should there be any difference between the descriptions in this Specifications Sheet and in the Catalogue, the descriptions in this Specification Sheet shall supersede.

(2) Specifications are subject to change without notice due to improvements or modifications.

IHI **IHI Construction Machinery Limited**
3174 Showa-machi, Kanazawa-ku, Yokohama, Kanagawa 236-8611 Japan
Phone: +81(45)276-1252 Fax: 81(45)276-2583

<http://www.ihikenki.co.jp/english>

Specifications are subject to change without notice due to technical improvements or modifications
Distributed by



Printed in Japan
IK1300E1209LL20