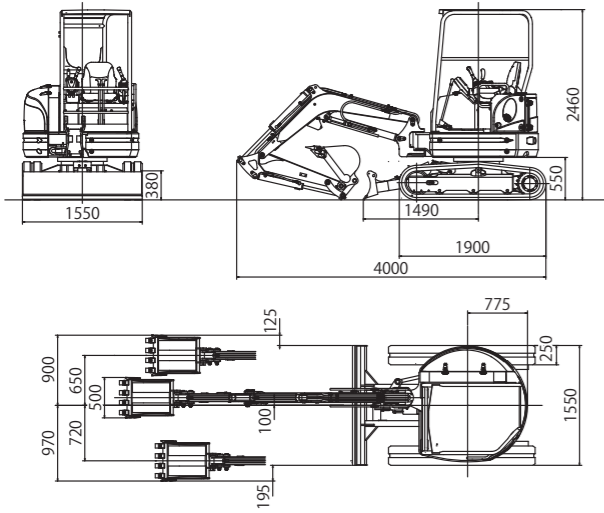
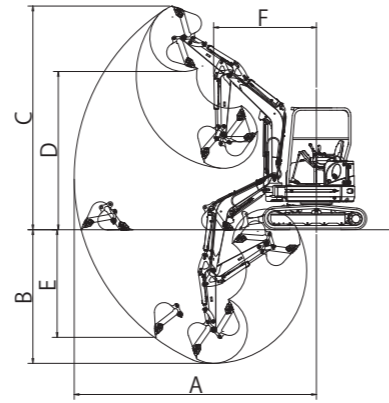


■ Dimensions (unit : mm)



■ Working Range (unit : mm)



		Std. arm	Long. arm
A	Max. digging radius	4560	4840
B	Max. digging depth	2440	2740
C	Max. digging height	4220	4410
D	Max. dumping height	2900	3090
E	Max. vertical digging depth	1840	2120
F	Min. front turning radius	2030	2090
	At right boom swing	1740	1790

■ 25V4-F Specifications

◇ Performance

Bucket capacity	0.08m <sup>3</sup>
Bucket width	500mm
Operating weight : Canopy (Cabin)	2575 (2725) kg
Transportation weight : Canopy (Cabin)	2500 (2650) kg
Swing speed	9.0min <sup>-1</sup>
Travel speed (low/high)	2.5 / 4.4km/h
Gradeability	58% (30°)
Ground pressure	31kPa (0.32kgf/cm <sup>2</sup> )
Max bucket digging force	21kN (2140kgf)

◇ Engine

Model	KUBOTA D1305-E4B
Rated output	17.6kW (23.9PS) /2400min <sup>-1</sup>
Fuel tank capacity	42L

- Please read carefully instruction manuals before operating machines, and use them correctly and safely.
- Please perform periodically check and maintenance for machines to prevent from troubles and accidents.
- Photographs may differ in some cases from actual objects. Specifications are subject to change without notice due to technical improvements or modifications.

◇ Boom swing system

Type	Boom offset with hydraulic cylinder
Swing angle (L/R)	80° / 50°

◇ Hydraulic system

Pressure	21.6MPa (220kgf/cm <sup>2</sup> ) 18.1MPa (185kgf/cm <sup>2</sup> )
Pump hydraulic flow	28.8 L/min×2+ 19.2L/min

◇ Dozer blade

Size	1550×380mm
Lift above ground / Drop below ground	355mm / 410mm

◇ Max auxiliary flow

1st line	48L/min
2nd line	19L/min

Distributed by:

**IHI**  
Realize your dreams

Zero Tail Swing Mini Excavator

**25V**  
*Four*



**IHI**  
Realize your dreams

IHI Construction Machinery Limited

Sales Division

3174 Showa-machi, Kanazawa-ku, Yokohama, Kanagawa 236-8611, Japan  
Tel: +81-45-276-1249 Fax: +81-45-276-2583  
<http://www.ih-kenki.co.jp>

IHI Construction Machinery Limited

# Safety EVOLUTION

## WORLD-STANDARD SAFETY

- ROPS/FOPS Compliance Operator Room
- ROPS/FOPS Canopy (Standard)
- ROPS Cabin (Option) • FOPS Cabin (Option)

## ERROR-PREVENTION

- All-lever lock system
- Neutral engine-start system
- Auto-parking brake in traction motors



ROPS Cabin



ROPS Canopy (Std.)



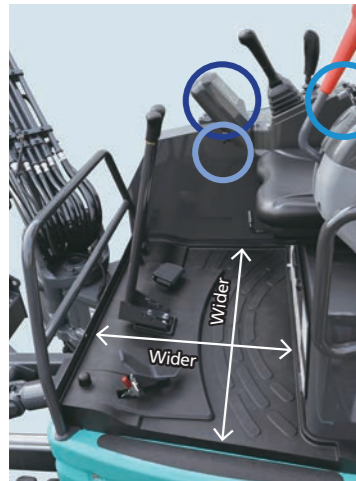
All operations are blocked when the lever is raised.



ROPS/FOPS Cabin (Opt.)

# Comfortable EVOLUTION

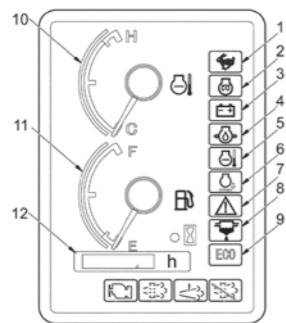
## COMFORTABLE OPERATOR ROOM AND EASY MANIPULATION



- Legroom enlarged by 20%
- Cabin room enlarged by 25%
- \*Comparison with our former model



●Easily visible monitor



- 1 Travel speed indicator
- 2 Glow indicator
- 3 Battery charge warning indicator
- 4 Engine oil pressure warning indicator
- 5 Water temperature warning indicator
- 6 Auto idle indicator
- 7 Control lock warning indicator
- 8 Water-separator warning indicator
- 9 Eco mode indicator
- 10 Water temperature gauge
- 11 Fuel gauge
- 12 Hour meter



### ●Centralized switches (Right console box)

- A Engine starter switch
- B Throttle lever
- C Auto idle selector switch
- D Light switch
- E Work mode selector switch



●Spare power port (12V 10A)

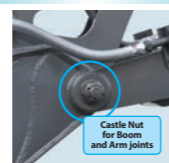
# Economy EVOLUTION

## DURABLE AND REPAIRABLE

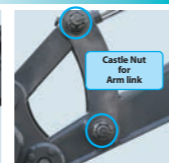
- Easily adjustable pins and longer life



Single-structured Swing Pin



Boom and Arm joints



Arm link



Bucket rattle adjuster

- Durable structure and easy care

## EASY MAINTENANCE

- Large covers for easier access



- Engine room



●Right hand cover

- Trouble reduction by 3 measures



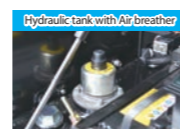
① Resin-made fuel tank



② Large fuel filter



③ Water-separator



Hydraulic tank with Air breather

\*The warning indicator turns on if water is collected up to the specified level.

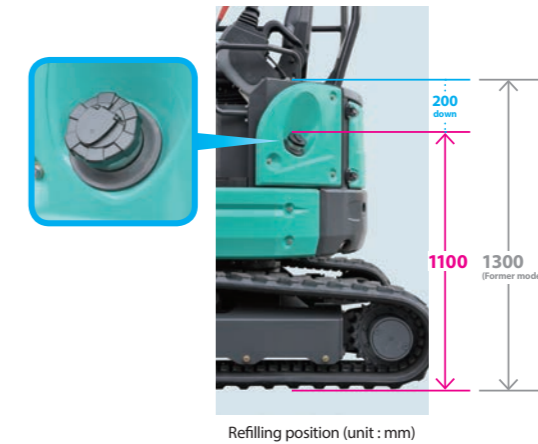
# High Performance EVOLUTION

## EASY SKIMMING WORK



- Close distance between Bucket Tooth and Dozer Blade

## EASY FUEL REFILLING



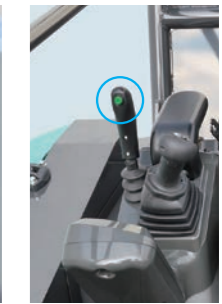
Refilling position (unit : mm)

## AUTO-SHIFT TRACTION

- Automatically shifted travel function



Auto high speed mode



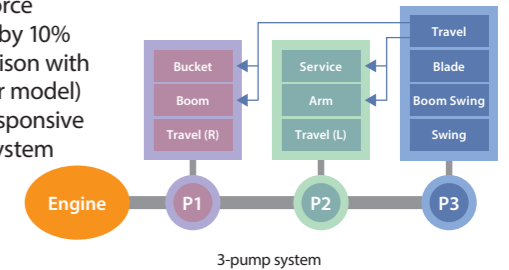
Low speed mode selector switch

## DURABLE AND REPAIRABLE



## HIGH POWER DIGGING AND QUICK RESPONSE

- Digging force increased by 10% (\*Comparison with our former model)
- Quickly responsive 3-pump system



3-pump system

## EQUIPMENT / OPTIONS

Description	Standard equipment	Optional equipment		Remarks	
Operator room	ROPS/FOPS Canopy (4-Post)	ROPS Cabin <sup>A</sup>	FOPS Guard	2-Post Canopy <sup>B</sup> (※)	(※) No ROPS compatibility
		Heater			
Seat	Suspension Seat	High back suspension seat <sup>C</sup>	Fabric suspension seat		
Control lever	with propotional switch <sup>D</sup>	w/o propotional switch (※)			(※) combination with
Lever pattern	Type A (ISO standard)	AF changer	ABCD changer <sup>E</sup>		
Control pedal	Boom swing pedal	Traction foot pedals <sup>F</sup>	1st aux. hydraulic control pedal <sup>G</sup>		
Crawler	Rubber shoes	Steel shoes	Rubber Pads <sup>H</sup>		
Arm	Standard arm	Long arm (+300mm)			
Buacket	Standard bucket	Digging buckets (※)	Loading buckets (※)		(※) Various sizes
Auxiliary hydraulics	1st auxiliary hydraulic piping	2nd auxiliary hydraulic piping	3rd auxiliary hydraulic piping		



<sup>D</sup> Control lever with proportional switch

<sup>E</sup> Lever pattern selector

<sup>F</sup> Traction foot pedals

<sup>G</sup> Aux. hydraulic control pedal (1st)

1 Flow hold switch  
2 Flow mode selector switch

<sup>H</sup> Rubber Pads