

IHI

30NX-2



# NX-2



# Masterful Usability at the Pinnacle of Power.



## Fatigue-Free for Increased Efficiency. Achieves Largest Operation Space in its Class.

- Safety lever locks all operations including driving and boom swing(excluding blade lowering) to prevent misoperation.
- Two driving speeds available. 4.8 km/h in high gear and 2.5 km/h in low gear, with easy switching by pedal.
- Wrist control type short joystick levers with armrest are equipped as standard, making it possible to operate the machine simply by moving your wrist.



## Keeps boom fall at minimal levels.

The boom holding valve minimizes the natural fall of the boom from its stopped position, ensuring safety when the excavator is not in use.

## Sintering metal bush extends greasing interval.

The sintering metal bush extends the time between grease applications. This helps lower the frequency of lube jobs and helps greatly reduce grease usage.

## Oil pressure measurement port equipped.

By incorporating an oil pressure measurement port with quick coupler, initial inspection can be done with greater ease.



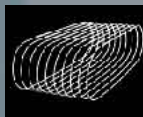
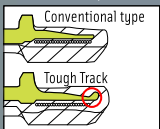
Oil pressure measurement port with quick coupler

## Equips the high durability rubber track - Tough Track® developed by Bridgestone Corp.

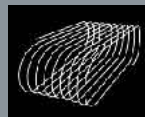
Tough Track®(The track) uses newly developed tread patterns, compounds and a spiral steel cord construction with corrosion resistant steel cord, providing significantly improved cut, tear and abrasion resistance performance and greater resilience to breakage.



Core metal profile

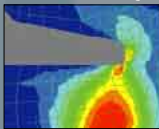


Overlap method for current rubber track

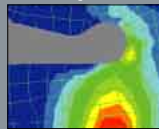


Spiral cord wrap method for Tough Track®

FEM analysis at Core metal edge



Conventional type



Tough Track

## Angled crawler frame.

The angled crawler frame design not only inhibits dirt from caking onto the surface, but also promotes better water drainage when washed, making crawler maintenance a breeze.



## Full rotation parking brake equipped as standard.

Since the brake engages at any angle in the full swing range, it eliminates the swing drift that tends to occur on inclined surfaces and makes it unnecessary to manually lock the rotation. (The brake engages automatically when the safety lever is raised or the engine is turned off.)

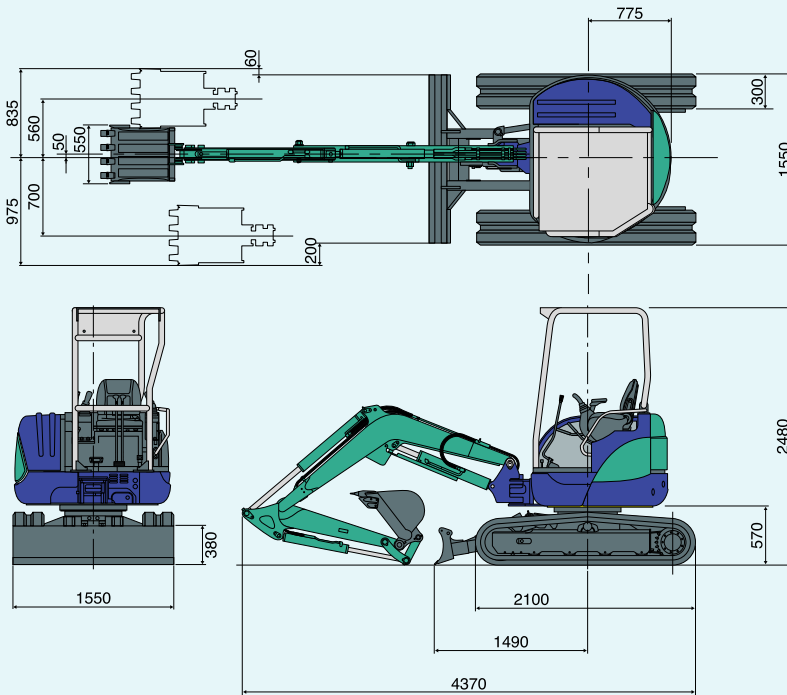
## Embedded boom lamp to prevent damage.



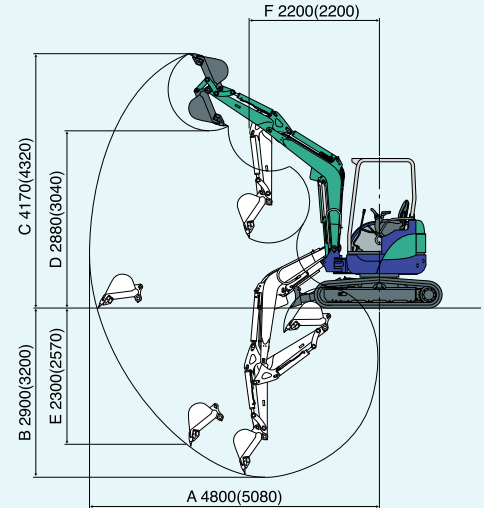
The boom's built-in lamp has been positioned on the cylinder rod section where it is less likely to be damaged. Even in severe environments the operator can work without worrying about breaking the lamp.



### 30NX-2 Dimensions (Unit:mm)



### 30NX-2 Working Range (Unit:mm)



A	Max. digging radius	4800mm/15.7ft
B	Max. digging depth	2900mm/9.5ft
C	Max. digging height	4840mm/15.9ft
D	Max. dumping height	3480mm/11.4ft
E	Max. vertical digging depth	2300mm/7.5ft
F	Min. front turning radius	2200mm/7.1ft
	At right boom swing	1730mm/5.7ft

※():Figures for long arm

### 30NX-2 Specifications

●Performance		
Std. bucket capacity (New JIS)	0.09m <sup>3</sup>	3.2ft <sup>3</sup>
Std. bucket width	550mm	21.7"
Operating weight	2980kg	6570 lbs
Machine weight	2300kg	5071 lbs
Swing speed	9.2min <sup>-1</sup>	9.2rpm
Travel speed (low)	2.5km/h	1.6mph
Travel speed (high)	4.8km/h	3.1mph
Gradeability	58%(30°)	
Ground pressure	32kPa(0.32 kgf/cm <sup>2</sup> )	4.6psi
Max. bucket digging force	26.5kN(2700kgf)	5957 lbs
●Engine		
Model	Yanmar 3TNV84	
Rated output	17.8kW / 2200min <sup>-1</sup> (24.2PS / 2200rpm)	23.9HP / 2400rpm
Fuel tank capacity	40L	10.6gal
●Boom swing system		
Type	Boom offset with hydraulic cylinder	
Offset angle (R/L)	90° / 50°	
●Hydraulic system		
Pressure	21.6MPa(220 kgf/cm <sup>2</sup> )	3133psi
Pump hydraulic flow	34.1L/min X2 + 19.8L/min	9.0gpmX2 + 5.2gpm
●Dozer blade		
Size (Width x Height)	1550mmX380mm	61.0"X15.0"
Lift above ground/ Drop below ground	360mm / 405mm	14.2" / 15.9"

### Options

- Long arm (standard+300mm/11.8")
- Rubber shoe with embedded links
- Ceiling mount air conditioner
- Vertical exhaust tailpipe
- Power port /Aux. hydraulic flow
- TOPS canopy (4-pillar)
- Steel cabin
- Hydraulic tilt angle dozer blade
- Additional counterweight
- Steel shoe, rubber pads

### • Bucket

- 0.04m<sup>3</sup> / 1.4ft<sup>3</sup> Digging bucket (250mm / 9.8"width)
- 0.05m<sup>3</sup> / 1.8ft<sup>3</sup> Digging bucket (320mm / 12.6"width)
- 0.06m<sup>3</sup> / 2.1ft<sup>3</sup> Digging bucket (450mm / 17.7"width)
- 0.07m<sup>3</sup> / 2.5ft<sup>3</sup> Long arm STD bucket (450mm / 17.7"width)
- 0.08m<sup>3</sup> / 2.8ft<sup>3</sup> Digging bucket (500mm / 19.7"width)
- 0.09m<sup>3</sup> / 3.2ft<sup>3</sup> Reinforced bucket (550mm / 21.7"width)
- 0.10m<sup>3</sup> / 3.5ft<sup>3</sup> Loading bucket (600mm / 23.6"width)

## Assurance that IHI excavators are environment-conscious.

In developing its products, IHI proactively took eco-friendly measures such as using low-pollution materials that can be easily re-used, and reducing the amount of consumables.



• Engine compliant with gas emission regulations set by the Japanese Ministry of Land, Infrastructure and Transport, as well as the EPA of the U.S.A. Also meets new standards for low noise as set by the Japanese Ministry of Land, Infrastructure and Transport.

• Mini excavators that have been judged as being environmentally friendly products are affixed with IHI's own Environmental Compliance sticker.



Additional counterweight



Vertical exhaust tailpipe



Hydraulic tilt angle dozer blade

Blade width 1800mm / 70.9"  
Blade height 335mm / 13.2"  
Tilting angle (right/left) 10°/10°  
Angle(front/rear) 21°/21°

## IHI IHI Construction Machinery Limited

Kishi-Tokai Bldg., 8-4-4, Nishikamata, Ota-ku, Tokyo, 144-8577, Japan  
Phone: 81-3-5714-8844 Fax: 81-3-5714-8840, 8843

Photographs appearing in the catalog were taken for publication and may differ in some cases from actual objects. Specifications are subject to change without notice due to technical improvements or modifications.

Distributed by

