

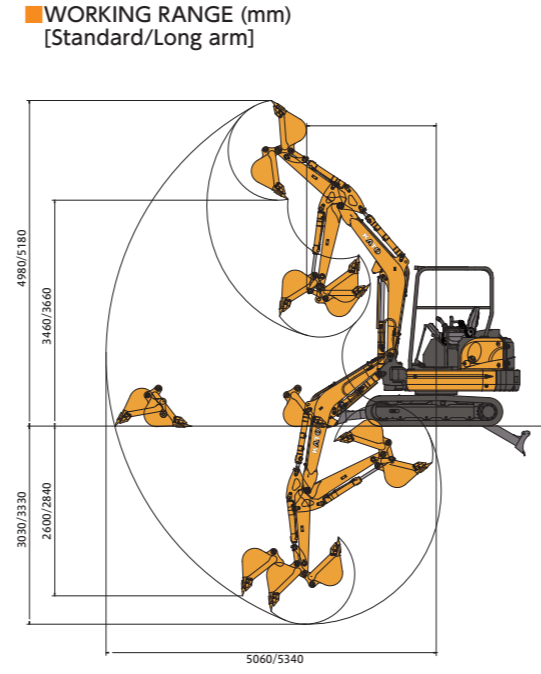
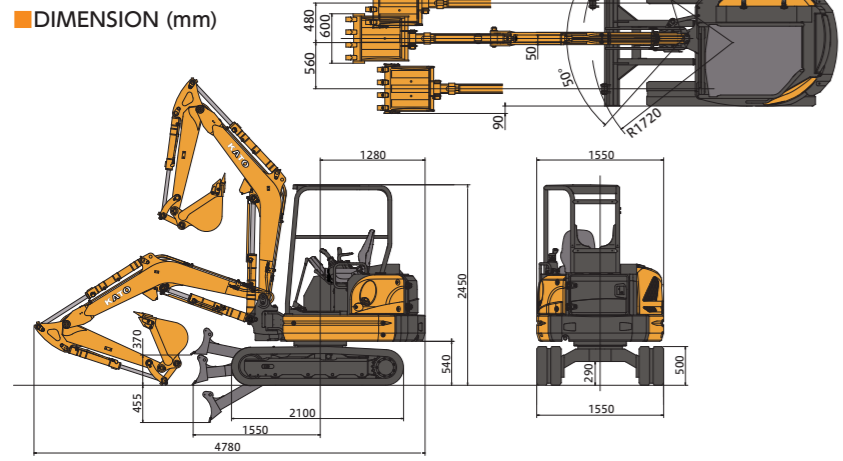
MINI EXCAVATOR

N FIVE

HD35

Technical Specification Model : HD35N5 Machine weight : 3,220kg Operating weight : 3,295kg Bucket capacity : 0.055m³ ~ 0.12m³ [Standard 0.11m³]

ENGINE Model YANMAR 3TNV88F Rated output 17.2kW/2,200min-1 Max. torque 83.9N·m/1,320min-1	TRAVEL&SWING SYSTEM Travel speed 2.7/4.7km/h Max. swing speed 9.0min-1 Grade ability 58% (30°) Ground pressure 30kPa(0.31kgf/cm ²)	CAPACITY Hydraulic tank 33L(reference capacity) Fuel tank 42L
DIMENSIONS Overall length 4,780mm Overall height 2,450mm Overall width 1,550mm Max. ground clearance 290mm Tail slewing radius 1,280mm Crawler length 2,100mm Shoe width 300mm	DIGGING FORCE Bucket digging force 29.1kN Arm digging force 17.1kN	HYDRAULIC SYSTEM Pumps Double variable piston pump and gear pump Swing motor Constant displacement piston type with swing brake Travel motor Variable displacement plunger motor Control valves 9 section multiple control valves Max. pressure/setting 24.5MPa



STANDARD AND OPTIONAL EQUIPMENTS

○Standard ●Optional

Safety equipment ROPS canopy ○ TOPS canopy ● Operator protective guards (Top guard) (only cabin) ● Safety lock lever ○ Retractable seat-belt ○ Boom working light ※1 ○ LED boom working light ※1 ● Front and Rear working light (Only cabin: Front 2, Rear 1) ● Rear side mirror (only cabin) ● Automatic parking brake (slewing table) ○ Automatic parking brake (traveling) ○ Caution indication ○ Swing table under cover ○ Reinforced hose (partial) ○ Rear side reflective plate ○ Engine fan guard ○ Secondary engine stop switch ○ Tie down point ○ Front guard (ROPS, cabin) ● Traveling alarm ●	Operation room 4-post canopy (ROPS) ○ 2-post canopy (TOPS) ● Cabin (ROPS) ● Piping and others Anti-drift valve ● 1st aux. piping for attachment (W/A selectable) ○ 2nd aux. piping for attachment※2 ● 3rd aux. piping for attachment※2 ● Aux. piping proportional control※3 ● Stop valve for 1st aux piping port ● Accumulator ● Pattern change valve (AB, AF or ABCD) ● Cold region battery ● Designated paint ● Relief valve for aux port(13.7MPa) ● Relief valve for aux port(17.2MPa) ● Working equipment Bucket 0.055m ³ ● 0.08m ³ ● 0.11m ³ ○ 0.11m ³ (with Hook) ● 0.11m ³ (Reinforced type) ● 0.12m ³ ● Arm STD Arm ○ Long Arm (+300mm) ● Dozer blade Reinforced type ○ Traveling equipment 300mm rubber shoe ○ 350mm rubber shoe ● 300mm steel shoe ● Traveling frame undercover ○	System Mode selection (Vmax mode / ECO mode) ○ Auto-idling mode ○ Auto transmission ○ Traveling speed 1 fixed mode ○ Operation room option (only cabin) Heater ● Air Conditioner ● AM radio ● Maintenance Outer fuel filler port ○ Double element air cleaner ○ Cartridge type return filter ○ Hydraulic oil tank with air breather system ○ Side by side cooling ○ Plastic fuel tank ○ Large fuel filter ○ Water separator with electric sensor ○ Dustproof net in front of radiator ● Castle nut for adjustment (boom tip) ○ Castle nut for adjustment (arm link) ● Engine error code display ○ Engine diagnosis ○ CAN service connector ○ Tool set ○
---	---	--

SPECIFICATION AND COMBINATION OF BUCKET

Type	Bucket				
Bucket capacity (JIS M3) (m ³)	0.055	0.08	0.11	0.12	
Bucket width (mm)	without side cutter	350	450	550	610
	with side cutter	400	500	600	660
Number of bucket teeth	3	3	4	4	
Standard arm	●	●	●	□	
Long arm	●	●	×	×	

● : General purpose □ : Light work × : Unusable

SHOE

Type	Rubber	Steel
Shoe width (mm)	300	
Overall width (mm)	1,550	
Ground pressure (kPa)	30	31

● Before using this machine, read the instruction manual precautions thoroughly to operate it correctly
 ● Specifications are subject to change without notice for improvement purposes
 ● Photographs shown in the catalog were taken for publication and therefore may differ in some cases from actual objects
 ● When operating the mini excavator, wear clothing and equipment in accordance to local legal and safety regulations.

※1 Cannot be installed at the same time
 ※2 2nd or 2nd and 3rd aux piping cannot be selected without the 1st aux piping
 ※3 E grip type

● Contact for enquiry:



Great stability and high performance

Powerful Strong Reliable

Easy routing maintenance and inspection

Workability

Enhanced dumping height

Dumping height is higher than previous model(110mm higher than HD35N4). Workability has been improved.



Fully versatile easy skimming work

The closer distance between bucket teeth and dozer blade allows it to skim the ground easier.



Compact body & wide working range

The perfect combination of compactness and wide working range allows it to access confined spaces and enables for excellent performance. It also secures enough digging height for truck loading.



Safety

Engine start system & safety lock system

The engine is turned on when that lever is in the neutral position. Auto-parking brake is activated when the lock lever is raised. (Including dozer blade and swing) It offers high operating safety and prevents unexpected movements.



ROPS compliant 4-post canopy

4-post canopy with a retractable seat belt is available as standard feature. Safety of operator has significantly improved. (Fasten your seat belt when you operate)



(Analysis model) High stress Small stress

Comfortability

Comfortable operating space

Ergonomic wide comfortable operating space has been designed to fit operator.



12V electric supply port

Cup holder



Maintenance

Wide openable engine cover

The fully openable engine cover provides great access to various components. Daily maintenance such as air filter cleaning, engine oil replacement become easier.



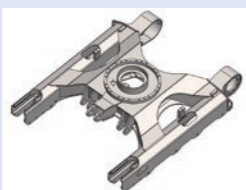
Easy refueling

The fuel filler port is placed at a lower position for easy refueling.



X-shaped under carriage

It enhanced the strength against twist. Mud drainage performance has increased and cleaning is now carried out with ease.



Durability

Frame protection

Durability and sturdiness are increased all around the body by casting.



Working light under the boom

The light installed under the boom is protected from damage.



Reinforced dozer blade

The box-shaped dozer blade provides higher rigidity.

