

**KATO**

# KA-900

## ALL TERRAIN CRANE

- Maximum rated lifting capacity: 90t
- Maximum main boom length: 45.0m





# ***THE NEW KA-900***

***Designed for reliability and long life - a sure step***





**towards profitability.**





**A comfortable environment with less fatigue to operator, that built up safety & efficient job.**

*Try it on the road!*



**Superb driver comfort means less operator fatigue leading to greater safety and efficiency.**

Full width well equipped cab, exceptionally quiet, good visibility in all conditions. Fitted with air suspension driver's seat, large front windscreen, remote controlled wing mirrors, adjustable steering wheel, cruise control (option), air conditioning (option), etc.



Independent rear steering with automatic locking system, hydraulic suspension control mounted at the side of the driver's seat.



# Try out the crane!



Comfortable crane cab, good visibility, effortless control.



Comfortable crane cab with good all-round visibility and effortless controls.

Well thought out operating position with ergonomically designed joy stick controls. Simple and clear control panel.



## Safe Load Indicator.

KATO's own ACS, type MS-15. With the advanced KATO Multivision system, a unique twin processor system supports the high performance. Active safety "working range limit" (working area restriction mode) is standard.



• Air conditioning (option)



• Cool/Warm box (option)



• Tea table



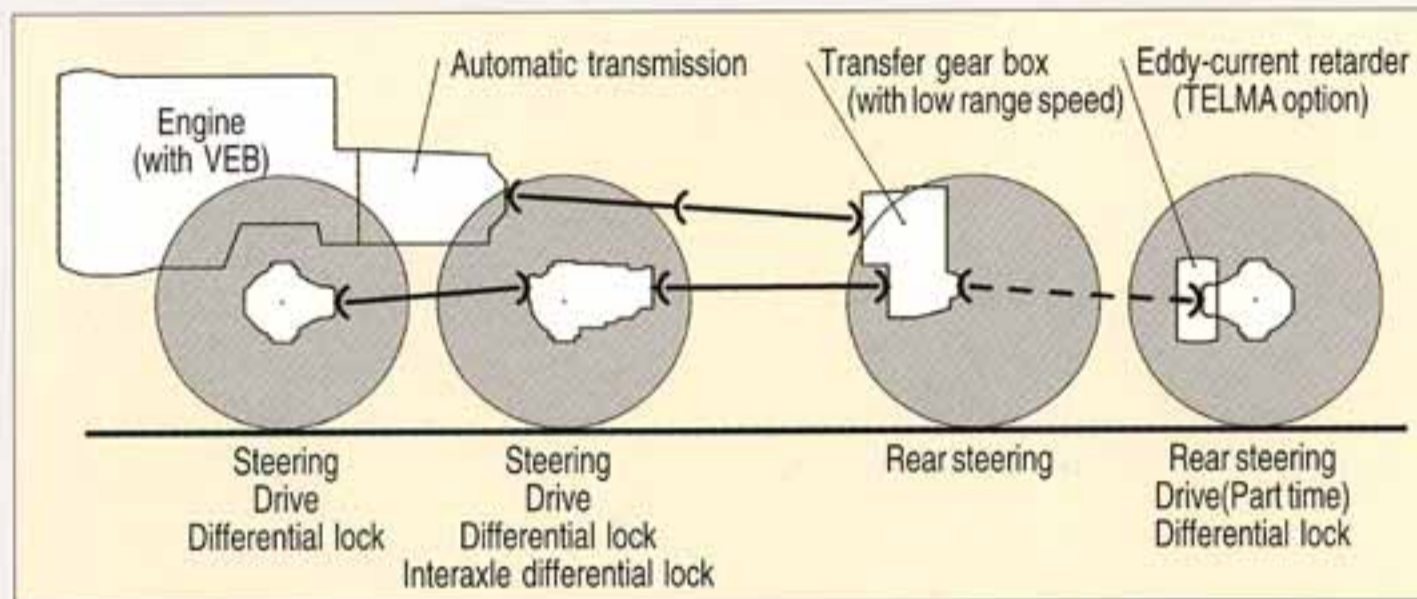


# For your profitability, KATO have once again built in long life and reliability.

What do you need from a crane carrier?

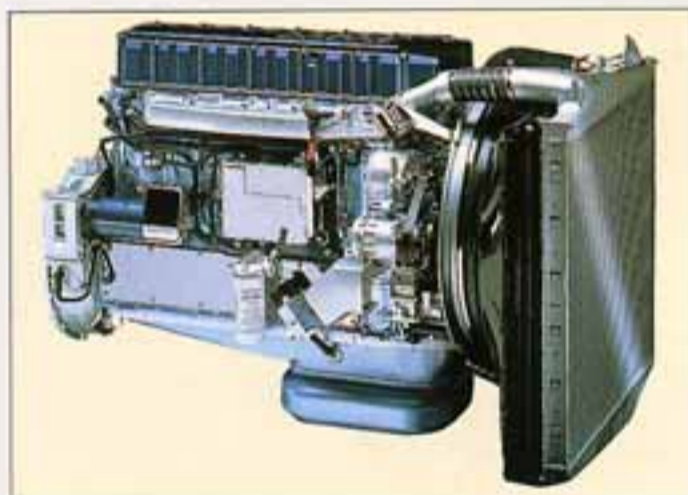
Our answer;

8×6 drive, front engine and front 2 axle drive on the road and 3 axle drive (1st, 2nd and 4th) off road, independent rear steering with automatic locking system.



**Very economical with high performance auxiliary brakes.**

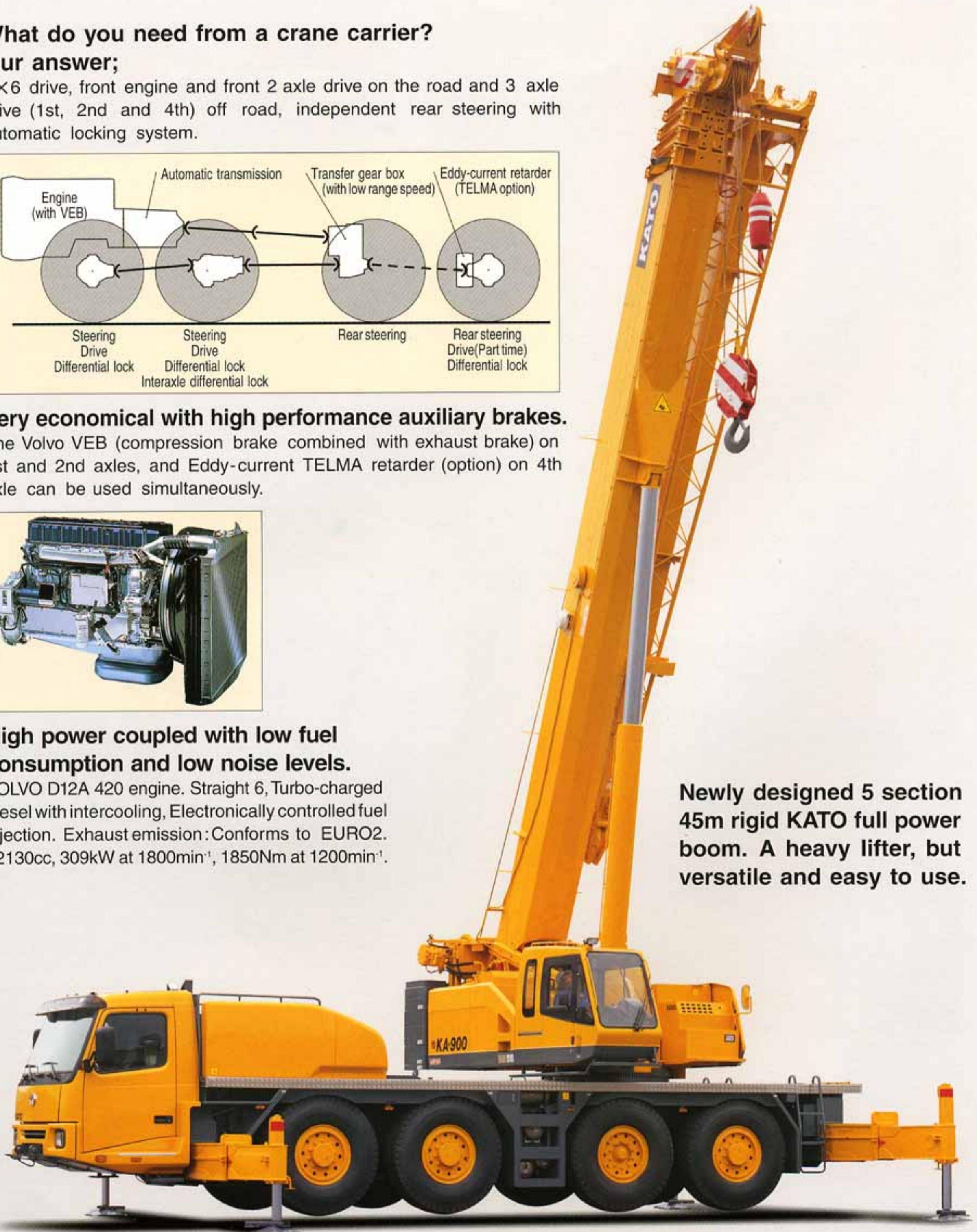
The Volvo VEB (compression brake combined with exhaust brake) on 1st and 2nd axles, and Eddy-current TELMA retarder (option) on 4th axle can be used simultaneously.



**High power coupled with low fuel consumption and low noise levels.**

VOLVO D12A 420 engine. Straight 6, Turbo-charged diesel with intercooling, Electronically controlled fuel injection. Exhaust emission: Conforms to EURO2. 12130cc, 309kW at 1800min<sup>-1</sup>, 1850Nm at 1200min<sup>-1</sup>.

**Newly designed 5 section 45m rigid KATO full power boom. A heavy lifter, but versatile and easy to use.**





**Side stowed swing away 10/18m fly jib(option) with offsets of 0°, 25° and 45°.**



**Main & auxiliary winches.**  
Both main & auxiliary winches are built in as standard with a line pull of 6.5tonnes.

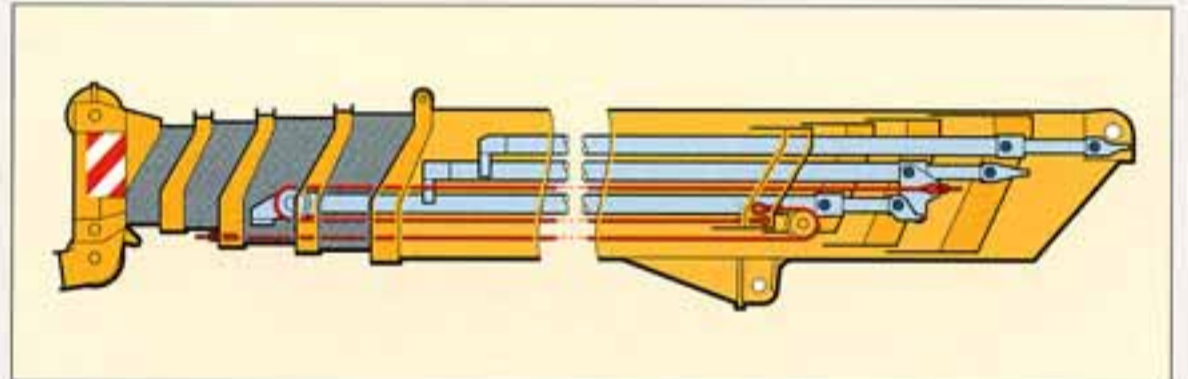
**High power and economical.**

VOLVO PENTA TD730VE Turbocharged straight 6 diesel engine with direct injection, 6730cc, 150kW at 2250min<sup>-1</sup>, 800Nm at 1450min<sup>-1</sup>, exhaust emissions in accordance with EC97/68.



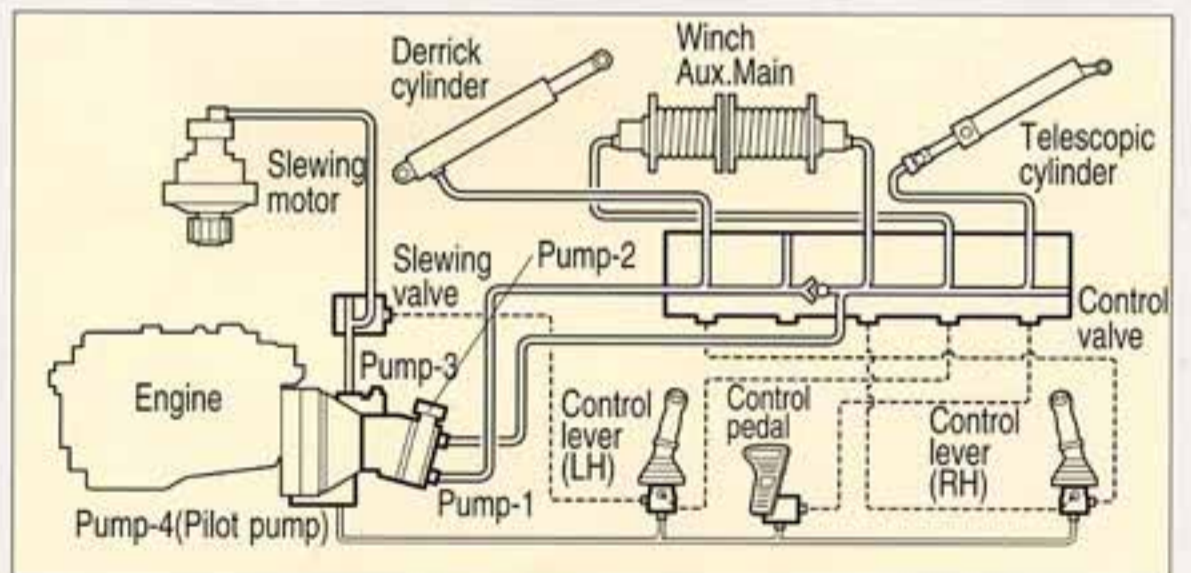
**Full power rigid 45m boom.**

Versatile and easy to use in congested sites.



**Reliable hydraulic crane control system.**

With pilot type joy sticks. Usual smooth KATO operations.







- \* Study and follow the local regulation for driving position regarding mounting of fly jib and counterweights.
- \* Before you use the crane, study the instruction manual thoroughly and follow the instructions it contains.
- \* Some differences may arise between the machine delivered and the photographs in the catalogue due to the country the crane will

be used in or any added improvements.

Note: The specification may be changed without notice.

- \* The actual colours of the body and interior may appear slightly different from those shown in this catalogue due to the limitations of photography and printing.

Address inquiries to:



## KATO WORKS CO.,LTD.

9-37, Higashi-ohi 1-chome, Shinagawa-ku, Tokyo 140-0011, Japan

Telephone : +81 (0)3 3458-1115      Telex : 222-4519 CRKATO J

Facsimile : +81 (0)3 3458-1151

<http://www.kato-works.co.jp/>

