

CR-130RV








CR-130RV

9-37, Higashi-ohi 1-chome, Shinagawa-ku, Tokyo, 140-0011, Japan / Tel.: Head Office: +81 (0) 3 3458-1111 Overseas Marketing Department: +81 (0) 3 3458-1115 / FAX: +81 (0) 3 3458-1151

CITYRANGE

CR-130RV



 Web site kato-works.co.jp 
 / KATO WORKS OFFICIAL [youtube.com/user/katowork](https://www.youtube.com/user/katowork) 
 [instagram.com/kato_works_official/](https://www.instagram.com/kato_works_official/) 

- Before you operate the machine, study the instruction manual thoroughly and follow the instructions it contains.
- Some differences may arise between the machine delivered and the photographs in the catalog due to any added improvements.
Note: The specification may be changed without notice.
- The actual colors of the body and interior may appear slightly different from those shown in this catalog due to the limitation of photography and printing.

● Contact for enquiry:

KATO **KATO WORKS CO.,LTD.**
 9-37, Higashi-ohi 1-chome, Shinagawa-ku, Tokyo, 140-0011, Japan
 Tel.: Head Office: Tokyo +81 (0)3 3458-1111
 Overseas Marketing Department: Tokyo +81 (0)3 3458-1115 / FAX: Tokyo +81 (0)3 3458-1163
<https://www.kato-works.co.jp>

QUALITY & EXPERIENCE
SINCE 1895

C05891
2.2023-1000(FB) 1

KATO

Super Versatile City range Crane for Professionals

Approaching the small space



The CR-130RV is one of the most compact mobile crane in the market. It approaches to the confined space that any other mobile cranes cannot approach. 4x4 steering provides compact turning radius and maneuverable traveling. Not only construction site but also plant, warehouse, factory, or island are the territory of CR-130RV. The GVW is only 13,825kg and able to work on the site which have weight restriction like old city, bridge or building floor under construction.



◆ Operator can monitor left or rear blind spot and winch condition via multiple view colour Monitor.



Short tail!



Lift in the small space



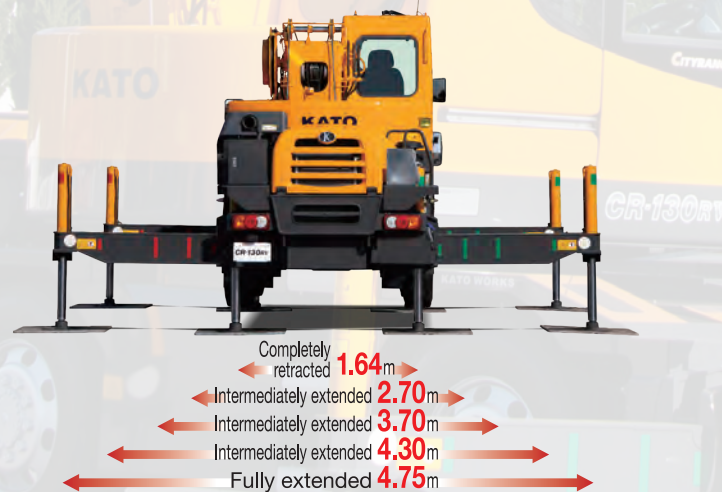
The strong and powerful main boom of 24m. The simultaneous telescoping makes operator to start and finish the lifting easily and smoothly. The fly Jib is up to 5.5 m and the luffing operation is hydraulic. The fly jib approach to the farther target even the crane have to be set up close to the the building. One of the biggest feature is its compact tail slewing radius. It is only 1.60m and does not require big space for slewing. CR-130RV could lift even the work site like along to the building.

Utilize the small space



Outrigger extension width

◆ Multiple outrigger positions are available for optimum lifting operations.



The job site of CR-130RV is very confined. However, this new CR-130RV has applied electronic control system. Outrigger operation is now available by remote control. Operator is able to check the outriggers position closely. Outriggers have various positions that support suitable lifting to each job site.

Searcher Hook solution for the small space



◆ Casters make moving the Searcher Hook easy and effortless.



The lifting work in warehouse or factory have height limit. The solution for these work sites is Searcher Hook which is available for CR-130RV. The Searcher Hook is easy to install and able to select from 2 positions. The maximum lifting weight is 3t and useful to lift heavy load such as manufacturing facility in the factory. As long as the Searcher Hook can be inserted you are able to lift and move the load even in very small space.



High rigidity 6-section SUPERBOOM

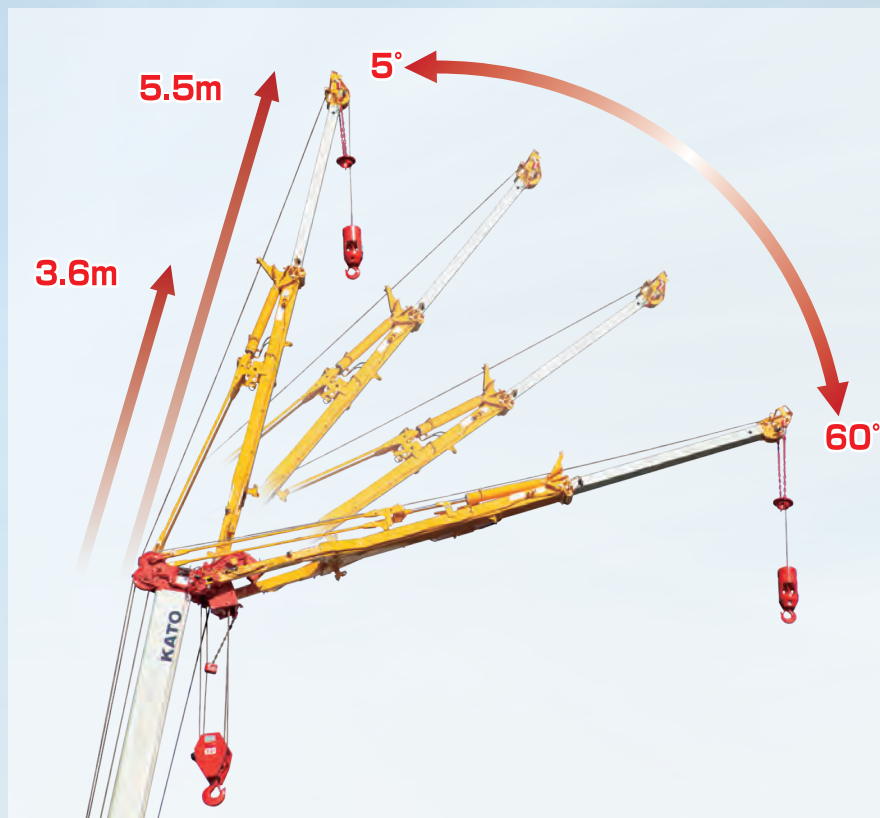
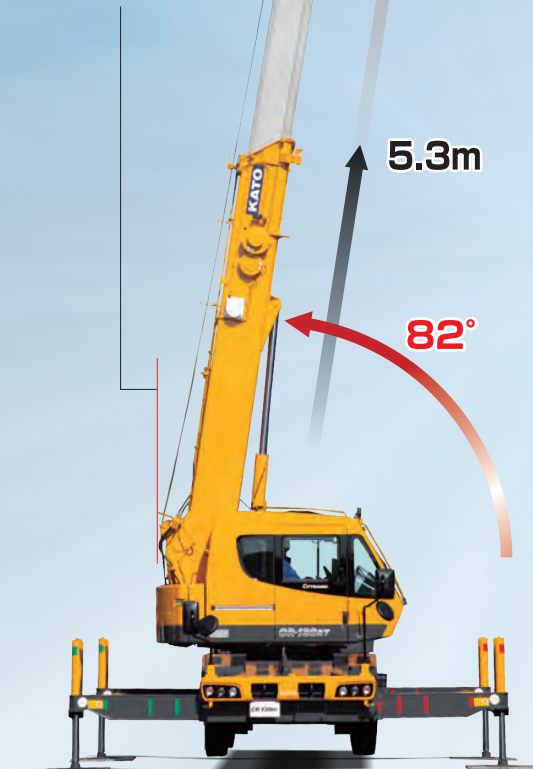
◆ Boom lifting capacity **SUPERBOOM**

- Boom type..... 6-section round shaped full power boom
- Maximum lifting capacity..... **13t x 1.7m**
- Boom length..... **5.3m ~ 24m**
- Maximum lifting height..... **24.8m**

◆ Jib lifting capacity

- Jib type..... 2-section hydraulic luffing power jib
- Maximum lifting capacity..... **1.6t x 82°**
- Jib length..... **3.6m, 5.5m**
- Maximum lifting height..... **30.3m**
- Jib offset angle..... **5° ~ 60°**

- Tail slewing radius..... **1.6m**



Electronic Control Joystick

It applies electronic control levers which are easy to operate. Thanks to the electronic control system you are able to set and record the crane speeds. More functional and more comfortable to all operators.

▼ Liquid crystal display cluster meter (At view while traveling)



(km/h indication)



(MPH, km/h indication)

Seat

Seat suspension is available. The seat provides comfortable reclining.



▲ 3 position seat belt



Touch screen control COR information display

Information such as fuel consumption, operation hour are available on display.



ECO function

- This function supports economical crane operation.

Crane operation

- It limits the maximum engine speed to reduce the fuel consumption and noise.



- The new outrigger system facilitates the process of outrigger setting. The vertical cylinders extend and automatically stop at horizontal position while operating semi-automatic leveling switch.



▲ Multiple view colour Monitor



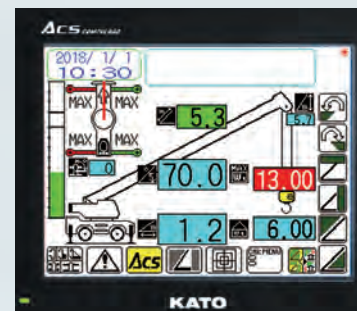
▲ Emergency engine stop switch (for crane operation)



▲ New Air Conditioner with Dehumidification function

Touch screen control ACS moment limiter

A range of limiting functions to increase Safety during Operation.



Load factor limit

- It limits the load factor to 80% ~ 100% of the rated lifting capacity and keep a safe margin.

Working range limit

- It limits the 2 vertical surface range and avoid collision.

Electronic Control Pedal

This new pedal controls Boom telescoping, Main Winch and Aux. Winch whichever is selected. The electronic control pedal provides flexible crane operation.

Hill Start Assistance **NEW**

This new function provides the brake at the time of acceleration on the hill. Activate and deactivate is selectable.



Note) It depends on the traveling condition and will not prevent all retreats.

Clear and safe view

Operator can monitor left or rear blind spot and winch condition via multiple view colour Monitor.



KATO SAFETY VIEW SYSTEM



▲ Bird's-eye view

Surround View Camera

Operator is able to monitor a clear 360° view of the crane with this new feature. This aids safer stopping and/or parking.

Human Detect Assist System

The safety cameras detect human in blind spot areas and alerts the operator visually and audibly.

Note) It can not make 3 different detection at the same time. The operator decides which camera to use for detection.
 Note) This is support function for the operator. Therefore operator must always be vigilant when driving.
 Note) The Safety View System less specification is also available.

K·COR



● The K·COR is data logger system which records working status of crane. Record is extractable by the SD card and capable to confirm through K·COR program.

ABS

The ABS braking system has been provided as a standard feature. Ensures even safer braking especially on slippery ground.

Step less adjustable sun shade

The new sun shade cuts the sun light completely. This is useful to the operator by confirming lifting operation outside of the cabin clearly.



▲ LED working light



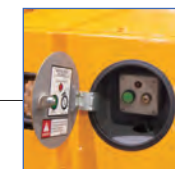
▲ LED ACS outside indicator



▲ Outriggers control box



▲ Left-front view camera



▲ Bridge device switch



▲ Front towing hooks and step



▲ LED working light



▲ LED head light with Hi and Lo selector



▲ Resin outrigger plate (option)



▲ Rear view camera



▲ Storage



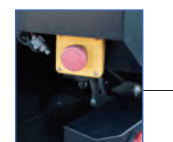
▲ Winch view camera



▲ LED working light (boom)



▲ Tool box



▲ Emergency switch



▲ LED combination rear light



▲ DEF tank



▲ Rear step



▲ Tool box



▲ Step

Environment-friendly and high performance engine

◆ The SCR (Selective Catalytic Reduction) and DPF reduce the NOx and PM in the emission.

- Model..... HINO J05E-VA (EU Stage V)
- Piston displacement..... **5.123L**
- Maximum Output..... **129kW / 2,500min⁻¹**
- Maximum Torque..... **540N·m / 1,600min⁻¹**

