

Machine Dimensions

Vessel Spec			Scoop End
B	Upper Machine Width	Without Mirrors	2,570mm
B1		With Mirrors	3,205mm
C	Overall Height		2,700mm
D	Overall Length		5,590mm
E	Ground Clearance		620mm
F	Vessel Bottom Height		1,550mm
Y	Vessel Dimensions (Inside)	Length	2,890mm
U		Width	2,370mm
V		Height (Front)	1,140mm
V2		Height (Back)	620mm
G	Approach Angle		23°
R	Swinging Radius		3,450mm
★	Vessel Swinging Radius		2,720mm

Raised Vessel Dimensions

S	Overall Length	5,790mm
K	Overall Height	4,630mm
H	Vessel Opening Height	1,260mm
W	Vessel Raise Angle	60°

Crawler Dimensions

L	Roller Distance	3,800mm		<table><tr><td>Shoe Pitch</td><td>150mm</td></tr><tr><td>Number of Shoes</td><td>66×2</td></tr></table>	Shoe Pitch	150mm	Number of Shoes	66×2
Shoe Pitch	150mm							
Number of Shoes	66×2							
M	Crawler Overall Length	4,630mm						
O	Crawler Overall Width	2,670mm						
P	Crawler Distance Apart	1,870mm						
A	Single Crawler Width	800mm						

- Before you operate the machine, study the instruction manual thoroughly and follow the instructions it contains.
- Some differences may arise between the machine delivered and the photographs in the catalog due to any added improvements.
Note: The specification may be changed without notice.
- The actual colors of the body and interior may appear slightly different from those shown in this catalog due to the limitation of photography and printing.

● Contact for enquiry:



KATO WORKS CO.,LTD.
9-37, Higashi-ohi 1-chome, Shinagawa-ku, Tokyo, 140-0011, Japan
Tel.: Head Office : Tokyo +81 (0)3 3458-1111
Overseas Marketing Department : Tokyo +81 (0)3 3458-1115 / FAX: Tokyo +81 (0)3 3458-1163
<http://www.kato-works.co.jp>

C06261
1.2026-500(FB) 1



iC 110R

FULL-ROTATING CRAWLER CARRIER



The most compact model for an 11-ton class with excellent maneuverability



Safety



Equipped with various safety equipment

Various limiting functions operate in accordance with the machine status and site conditions, enabling safe work to be performed.

Low Center of Gravity

- The low center of gravity greatly improves the stability of the machine while keeping ground clearance at 620mm, for great off-road capability.



Ground Clearance
620mm

Safety During Boarding and Exiting

- The step ladder is placed at the center of the door and ensures smooth boarding.



600mm

Strong Upper Frame

- Quality upper frame ensures durability and strength.

ROPS FOPS Cabin

- The IC110R is equipped with an ROPS and FOPS(ISO 3471/ISO 3449LevelII) cabin, which will ensure the operator's safety.

Impact Control During Vessel Lowering

- The IC110R monitors the vessel's angle and reduces impact when lowering the vessel.

Swinging Lock Pin

(Option)

- An optional swinging lock pin to prevent accidental swinging during transport.

FULL-ROTATING CRAWLER CARRIER **IC110R**

Traveling Speed Auto Limit

Swinging and traveling at the same time

Traveling and swinging speeds are both reduced.



Traveling when the vessel is raised

Traveling speed is reduced.



Overrun Prevention Function

- When traveling down a steep slope, IC110R's traveling speed is reduced to prevent overrun.



Vessel Raise Auto Limit

- For safety reasons, IC110R cannot perform raising the vessel and swinging operations at the same time.

- When on a slope of more than 9 degrees, the vessel raising operation will be limited for safety reasons.



No raising the vessel



Can raise the vessel



※If the operating seat is facing downwards, the IC110R can raise its vessel.

Transportability



The Most Compact Size for the 11-ton Class

- The **2,700** mm height is one of the lowest body heights for a full-rotating crawler carrier of 11-ton class.

- Body width of **2,670** mm is the lowest in the 11-ton class. The IC110R can enter narrower areas and reduce the risk of contact with other machines at the site.

- The IC110R is the ultimate machine for transportability.



Overall Height
2,700mm

Overall Width
2,670mm

A Brand New Interior Design for Kato Crawler Carriers

Best
Comfort



Improved Position of Air Outlets

- Repositioned air outlets for direct operator cooling.



Optional Acceleration Pedal

- The optional acceleration pedal allows another way of adjusting travel speed.



2-step Slide Suspension & Low-position Seat

- Seat and left lever unit can be repositioned for operator preference. Low seat position helps reduce sway during travel for comfortable operation.



More Legroom on the Right Side

- Extra right-side legroom achieved through the new design.



10.1 Inch Monitor

New Feature

The long-awaited huge display monitor for our operators. Check all parameters and cameras on the huge screen for easier operations.

Various Parameters ▶

Camera Display ▶



▲ Jog Dial

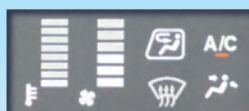


*Actual display might differ

Machine Status/Orientation Display



To prevent misrecognition of the travel direction, the crawler's travel direction is clearly shown with color arrows.



◀ AC Panel

AC and camera controls are concentrated on one monitor. Operators can touch the screen or use the jog dial to operate.

The new ROPS FOPS Cabin gives an Excellent View on the Right Side Further Eliminating Blind Spots with Cameras

Visibility



2 Standard Cameras to Cover the Blind Spots

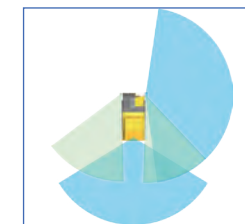
- Both cameras can be displayed simultaneously on the screen.



▲ Side Camera



▲ Rear Camera



Camera View
Mirror View

*Actual view areas may vary depending on conditions

Electronic Controls for Smooth Operations

Less Stress on the Operators

- By adopting electronic control from the joystick to the hydraulic pump, the pump flow rate is regulated in response to load conditions. This allows smooth operation without worrying about engine stall.

Improved Travel Stability Through Variable-Displacement Travel Motor Control

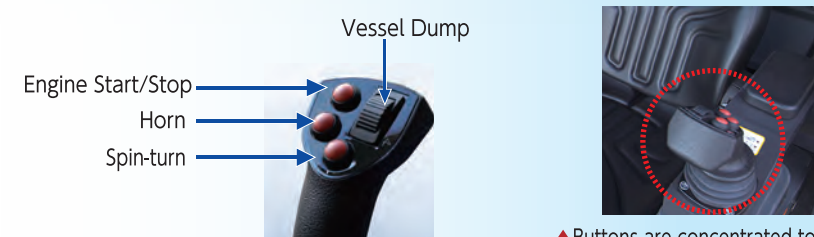
- By adopting a stepless speed-change system that significantly reduces the shift shock previously experienced when switching between 1st and 2nd speed on conventional motors, we achieved smoother ride comfort. During high-speed travel or turning, when travel load increases, the system automatically shifts to low-speed, torque-prioritized mode; when the load decreases, it automatically returns to high-speed mode. This enables comfortable, stable travel.

Easy Eco Driving

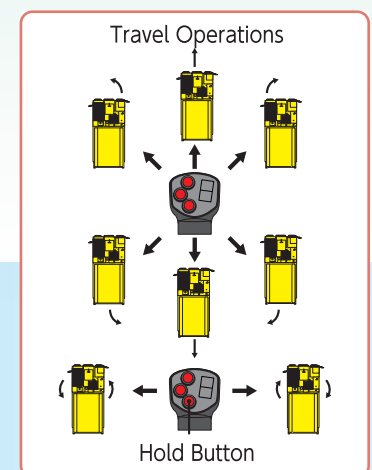
- Engine rev will be automatically adjusted based on joystick input.
- If the joystick is in the neutral position, the engine will automatically enter the idling state to save fuel.

Easy Operation with One Hand

- Travel, engine start/stop, horn, and vessel operations are all concentrated on the left joystick.



▲ Buttons are concentrated to one place.



▲ Operations on the joystick lever

Travel Operation Invert Function

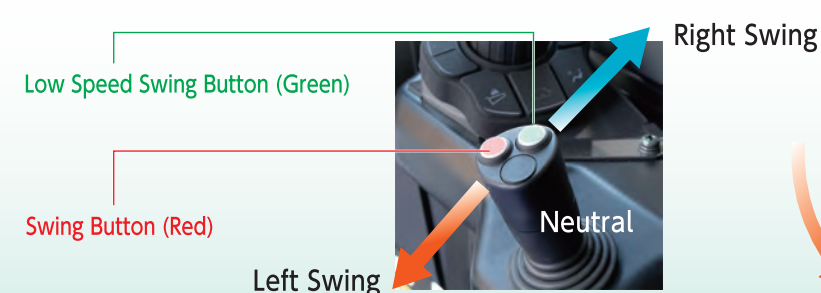
- Pressing the travel-operation reversal switch reverses the travel and steering directions. This allows the operator to perform travel operations in the same way even when the upper structure is rotated 180 degrees.



◀ Travel Operation Invert Switch

Swinging Operations

- Swinging operation is enabled only when the swing lever is in neutral and the operator presses the swing-enable button while moving the lever. This prevents unintentional Swinging even if the lever is accidentally contacted. Swinging speed can be selected between normal and low-speed modes to match operator preference.

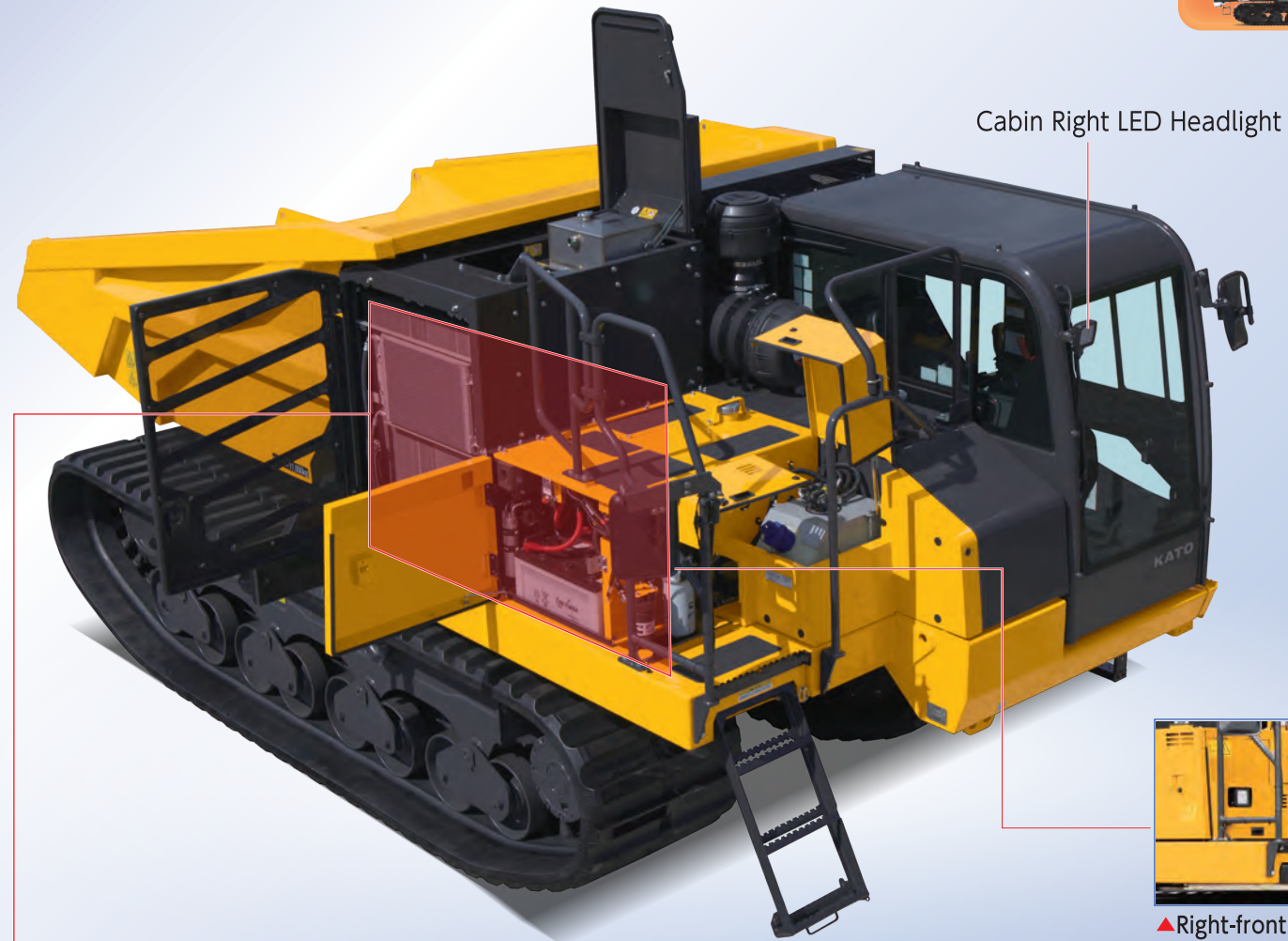


Left Swing

Right Swing



Layout with Easy Maintenance



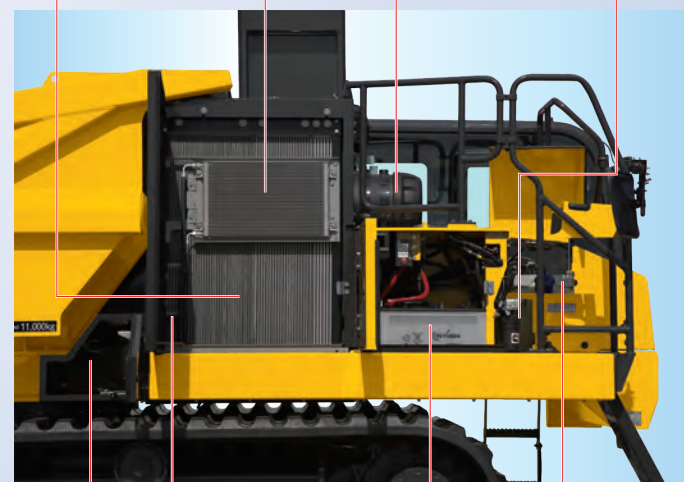
Cabin Right LED Headlight



▲ Right-front LED Headlight

Wide-opening covers make maintenance easy.

Radiator Condenser Air Cleaner Fuel Filter

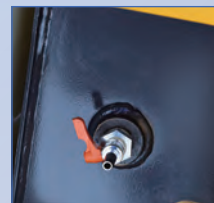


Fuel Cooler Battery DEF Tank

Grease Gun Holder (option)



▲ Vessel Safety Pin



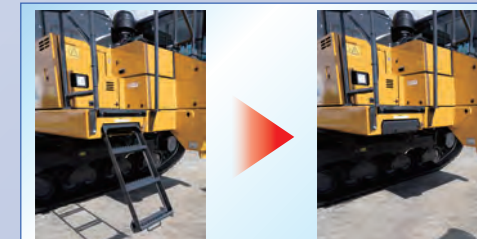
▲ Fuel Tank Drain Cock



▲ Battery Disconnect Switch



▲ Durable Vessel



▲ Retractable Step

Overload Prevention Function

- Before loading, enabling the weighing mode causes the platform to rise slightly, initiating measurement. When the load reaches the rated capacity, an audible warning (horn) is triggered. This prevents accidental overloading.



▲ Weighing Display

It is integrated into the main display for easy access.



Main Specifications

Model	IC110R
Load Capacity	11,000kg
Machine Weight	16,610kg
Vessel Capacity	6.1m ³ (Heaped)
	4.9m ³ (Struck)

Engine

Name	Cummins B6.7
Rated Output	191kW (260PS) / 2,000min ⁻¹
Displacement	6.7L

Traveling Related

Travel Speed	6.2 / 11.8km/h
Speed Change Range	Stepless
Swinging Speed	4min ⁻¹
Ground Pressure	35.3kPa (0.36kgf/cm ²) Unloaded
	58.9kPa (0.60kgf/cm ²) Loaded

Tank Volume

Hydraulic Oil Tank	135L[Full System Volume]
Fuel Tank	320L
DEF Tank	49L

Standard Equipment

Crawler Shoe	800mm Rubber Crawler Shoe
Vessel	Scoop End Type (Durable Steel)
Cabin	ROPS&FOPS Cabin, Window Washer, Cigar Socket, Room Light, Air Conditioner, USB (5V) Socket, Color Display, Jog Dial, Cabin Maintenance Door
Operation Lever	Joy Stick Lever for Travel, Joy Stick Lever for Swinging, Grip Switch for Vessel
Equipment	Horn, Back Alarm, LED Head Light, Floor Mat, Battery Disconnect Switch, Fuel Tank Drain Cock, Engine Oil Pan Drain Cock, Swinging Parking Brake
Others	Suspension Seat, Seat Belt, Side & Rear Camera, Load Weighing System, Dump Count Function

Option

Cabin	Radio
Lever	Travel Pedal
Equipment	LED Working Light, LED Back Light, Grease Gun Holder, Swinging Lock