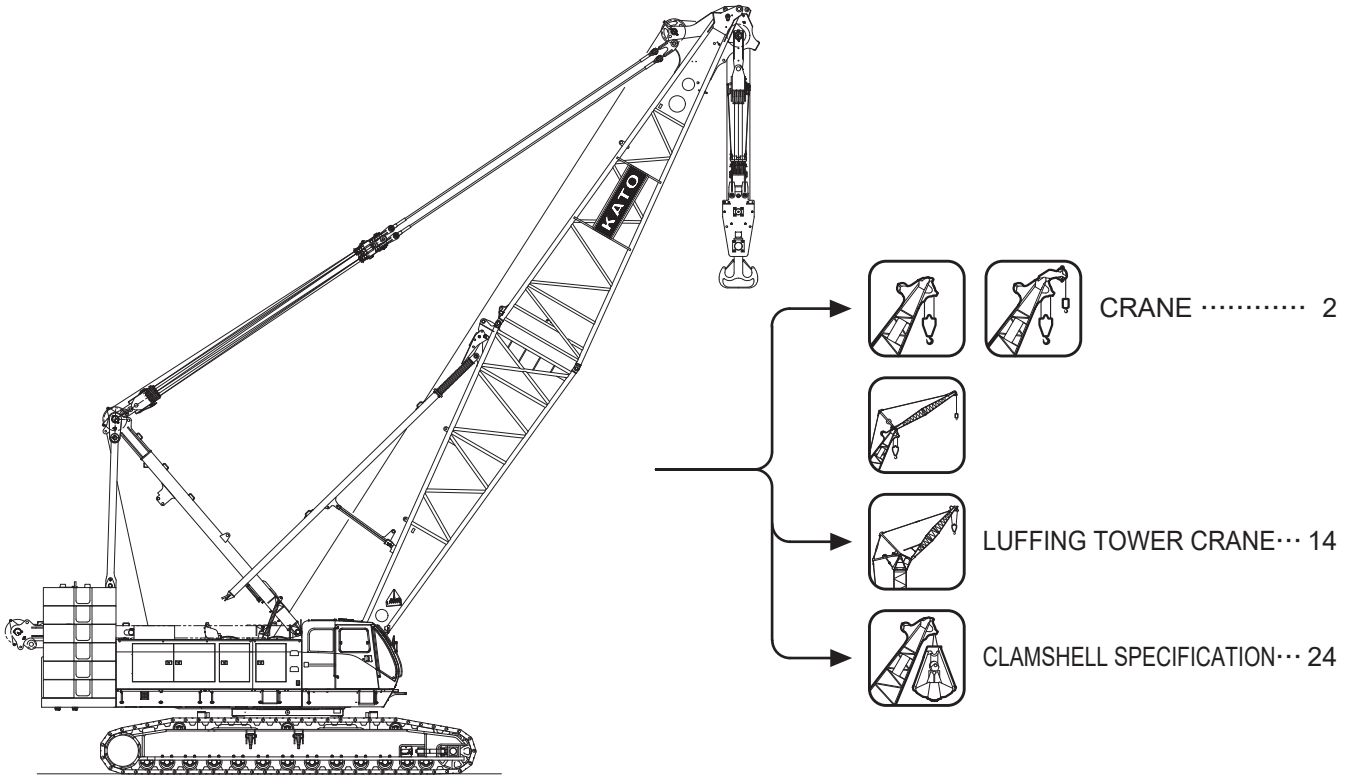


# CCH 2500



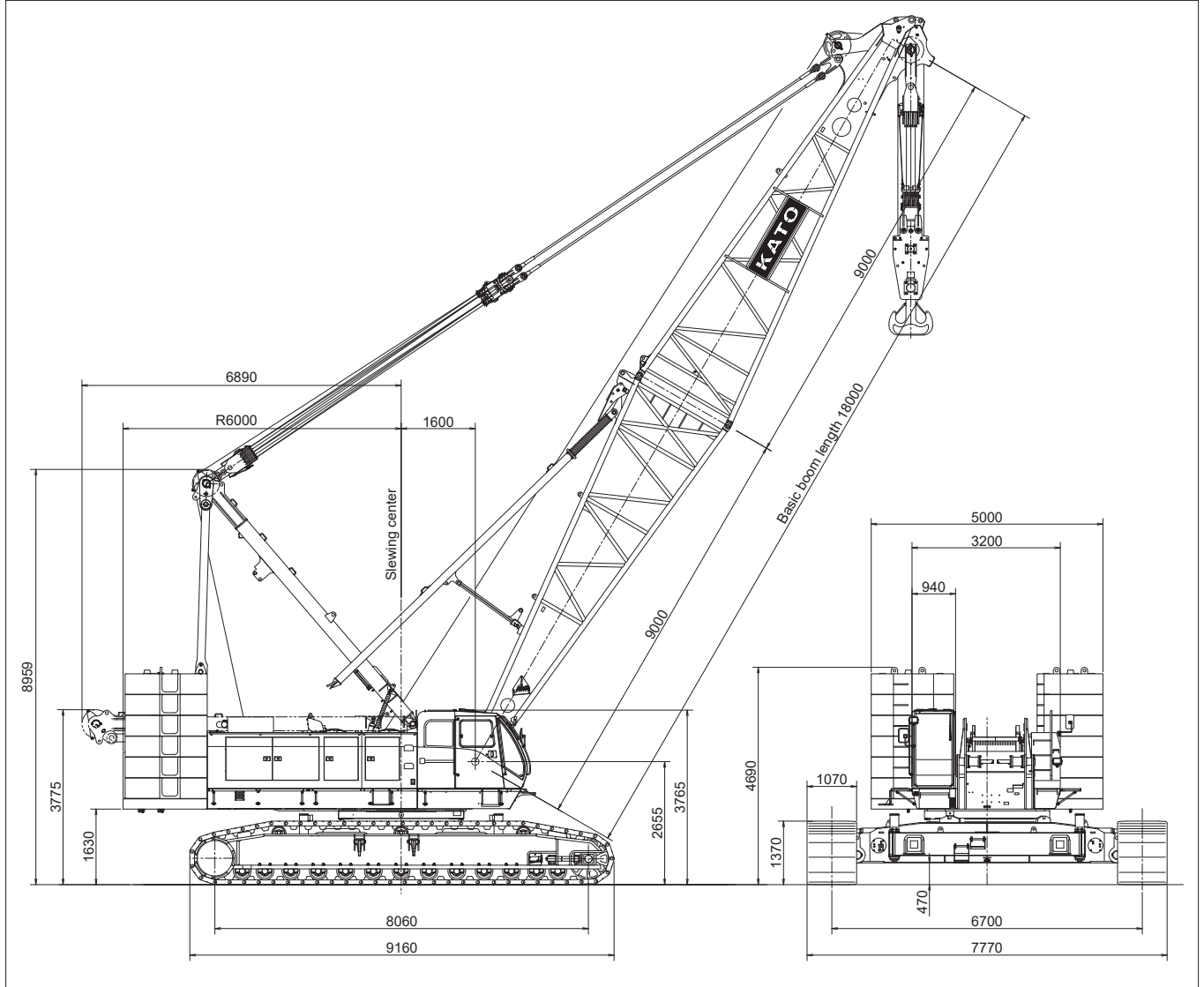
## Table of Contents

CRANE .....	2
Dimensions/Specifications .....	2
Working Ranges Diagram .....	3
Boom and Jib Combination .....	4
Rated Lifting Loads .....	7
LUFFING TOWER CRANE .....	14
Dimensions/Specifications .....	14
Working Ranges Diagram .....	15
Tower Boom and Jib Combination .....	16
Rated Lifting Loads .....	18
CLAMSHELL SPECIFICATION .....	24
Dimensions/Specifications .....	24
Clamshell Working Ranges Diagram .....	25
Clamshell Bucket Specification .....	26
Transport Dimensions and Weights .....	27



Dimensions / Specifications

(unit : mm)



■ CCH2500 Main Specifications

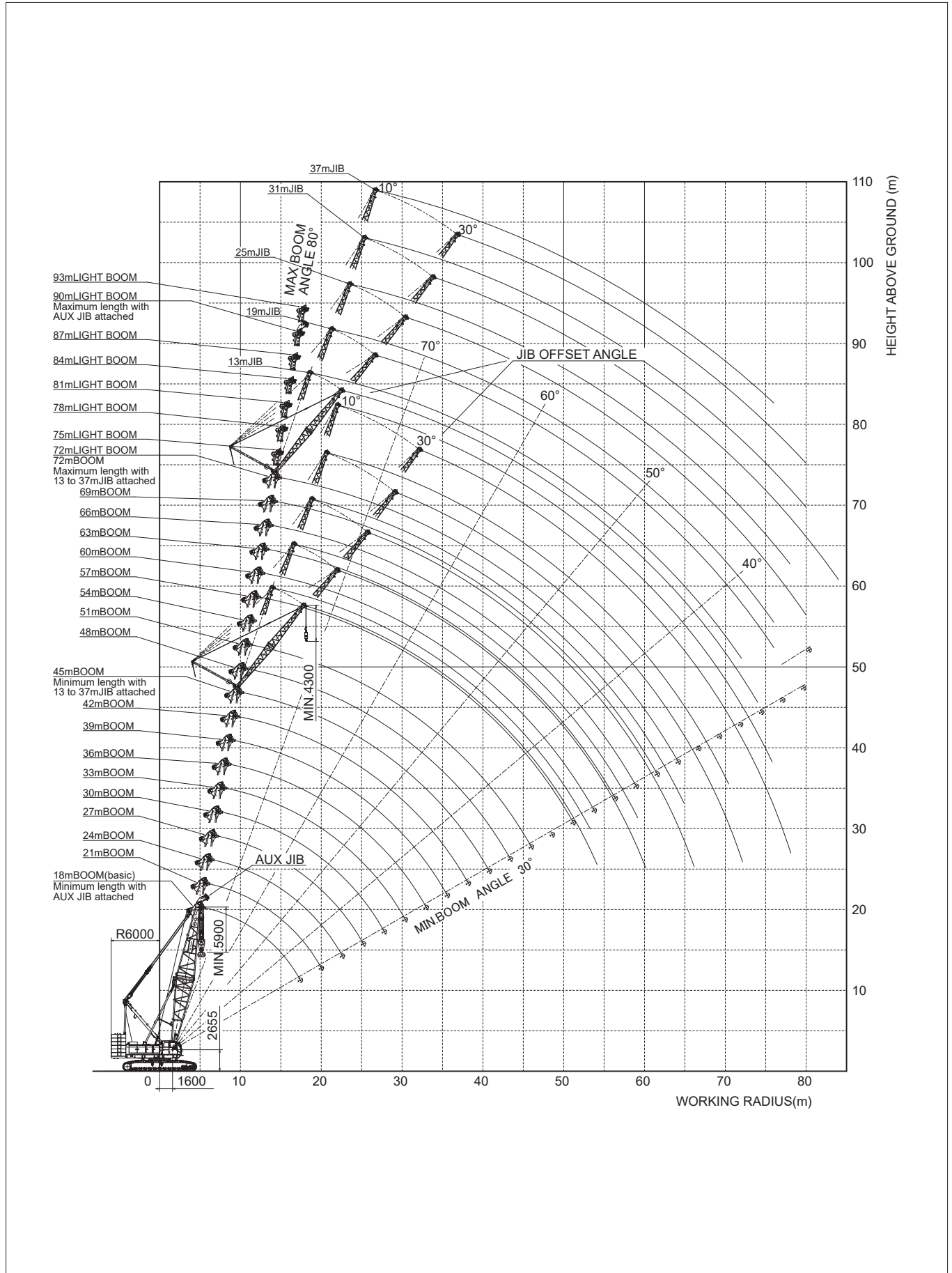
Performance		
Slewing speed	1.5min <sup>-1</sup>	
Travel speed	※ 0.9/0.6 km/hr	
Gradeability	30% (16.7°)	
Engine	Model	Cummins QSL9-3A (U.S.EPA Tier3,CARB Tier3,EU Stare III A)
	Rated output	242kW/2000min <sup>-1</sup>
	Total displacement	8.9 L
	Fuel tank capacity	510 L
	Battery	12V × 2pcs.

■ Crane Specifications

Performance		
Maximum lifting capacity × Working radius	250t × 5.2m	
Standard boom length	18.0~72.0m	
Light boom length	72.0~93.0m	
Maximum boom length with Jib boom	109m (72.0m standard boom + 37.0m jib boom)	
Rope speed	Hoisting/Lowering	※ 120m/min
	Boom hoisting/Lowering	※ 34m/min × 2
Rope part lines	250t/135t combination hook	16 part lines / 10 part line (Additional boom point sheave-block is necessary to use over 11 part lines)
	13.5t hook	1 part line
	Boom hoist	20 part lines
Standard counterweight	92.0 t	
Carbody weight	19.0 t	
Crane total weight	Approx. 210t (with 18.0m boom & 200t hook)	
Average ground bearing pressure	113 kPa (1.15 kgf/cm <sup>2</sup> )	

※ The value marked with “※” will be changed according to the loads given

# Working Ranges Diagram



**Boom And Jib Combination**

**Boom And Jib Combination**

Standard boom length (m)	Jib Length (m)					
	Aux.	13.0	19.0	25.0	31.0	37.0
18.0	○	×	×	×	×	×
21.0	○	×	×	×	×	×
24.0	○	×	×	×	×	×
27.0	○	×	×	×	×	×
30.0	○	×	×	×	×	×
33.0	○	×	×	×	×	×
36.0	○	×	×	×	×	×
39.0	○	×	×	×	×	×
42.0	○	×	×	×	×	×
45.0	○	○	○	○	○	○
48.0	○	○	○	○	○	○
51.0	○	○	○	○	○	○
54.0	○	○	○	○	○	○
57.0	○	○	○	○	○	○
60.0	○	○	○	○	○	○
63.0	○	○	○	○	○	○
66.0	○	○	○	○	○	○
69.0	○	○	○	○	○	○
72.0	○	○	○	○	○	○

**Light Boom And Jib Combination**

Light boom length (m)	Jib Length (m)					
	Aux.	13.0	19.0	25.0	31.0	37.0
72.0	○	×	×	×	×	×
75.0	○	×	×	×	×	×
78.0	○	×	×	×	×	×
81.0	○	×	×	×	×	×
84.0	○	×	×	×	×	×
87.0	○	×	×	×	×	×
90.0	○	×	×	×	×	×
93.0	×	×	×	×	×	×

**Wire Rope**

Purpose	Rope dia (mm)	Breaking Strength (kN)	Rope Type	Rope Length (m)
Load hoisting *1	φ 28	688	P · S (19) +39×P · 7	470
Load hoisting *2	φ 28	755	P · S (19) +39×P · 7	470
Load hoisting *3	φ 28	674	IWRC 6×P · WS (36)	470
Boom hoisting	φ 22.4	356	IWRC 6×WS (31)	370
Boom suspension	φ 36	1150	IWRC 6×P · WS (36)	—
Jib load hoisting	φ 28	688	P · S (19) +39×P · 7	290
Jib boom suspension	φ 28	585	IWRC 6×Fi (29)	—
Jib strut suspension	φ 34	1020	IWRC 6×P · WS (36)	—

Note:

\*1:Use for 200t loads and below. \*2:Use for 235t loads and below. \*3:Use for over 235t loads

**Max. Lifting Capacity by Reeving**

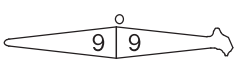
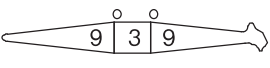
(unit:t)

Part line / Hook	1	2	3	4	5	6	7	8	9	10	11	12	13	14	15	16
250t	-	-	-	-	-	-	-	-	-	-	148.5	162.0	175.5	189.0	202.5	250.0
200t	-	-	-	-	-	-	-	-	-	-	148.5	162.0	175.5	189.0	200.0	200.0
135t	13.5	27.0	40.5	54.0	67.5	81.0	94.5	108.0	121.5	135.0	-	-	-	-	-	-
125t	13.5	27.0	40.5	54.0	67.5	81.0	94.5	108.0	121.5	125.0	-	-	-	-	-	-
90t	13.5	27.0	40.5	54.0	67.5	81.0	90.0	-	-	-	-	-	-	-	-	-
60t	13.5	27.0	40.5	54.0	60.0	60.0	-	-	-	-	-	-	-	-	-	-
35t	13.5	27.0	35.0	-	-	-	-	-	-	-	-	-	-	-	-	-
13.5t	13.5	-	-	-	-	-	-	-	-	-	-	-	-	-	-	-

**Attachment Arrangement**

As for the case with two kinds of methods, the combination of the upper section is recommended boom constitution.

**Crane Boom Arrangement**

Boom length (m)	Standard boom arrangement
18.0	
21.0	

※○mark : Normal guide-roller position ☆mark : Additional guide-roller position

## Attachment Arrangement

As for the case with two kinds of methods, the combination of the upper section is recommended boom constitution.

### ■Crane Boom Arrangement

Boom length (m)	Standard boom arrangement
24.0	
27.0	
30.0	
33.0	
36.0	
39.0	
42.0	
45.0	
48.0	
51.0	
54.0	
57.0	
60.0	
63.0	
66.0	

※○mark : Normal guide-roller position ☆mark : Additional guide-roller position

**Attachment Arrangement**

As for the case with two kinds of methods, the combination of the upper section is recommended boom constitution.

■ Crane Boom Arrangement

Boom length (m)	Standard boom arrangement
69.0	
72.0	

※○mark : Normal guide-roller position ☆mark : Additional guide-roller position

■ Light Boom Arrangement

Boom length (m)	Light boom arrangement
72.0	
75.0	
78.0	
81.0	
84.0	
87.0	
90.0	
93.0	

※○mark : Normal guide-roller position ☆mark : Additional guide-roller position

■ Crane Jib Arrangement

Jib length (m)	Jib arrangement
13.0	
19.0	
25.0	
31.0	
37.0	

※ Impossible of the equipment for a light boom.

# Standard Boom Rated Lifting Loads(92.0t Counterweight + 19.0t Carbody weight)

(unit : t)

Boom length (m)	18.0		21.0		24.0		27.0		30.0		33.0		36.0		39.0		42.0	
	Load	Angle	Load	Angle	Load	Angle	Load	Angle	Load	Angle	Load	Angle	Load	Angle	Load	Angle	Load	Angle
Working radius (m)																		
5.0	5.2mx 250.0	80.0	5.7mx 205.0	80.0														
6.0	192.0	77.3	192.0	79.2	6.2mx 183.0	80.0	6.7mx 175.0	80.0										
7.0	166.2	74.0	166.0	76.4	166.0	78.1	165.5	79.4	7.3mx 155.5	80.0	7.8mx 144.2	80.0						
8.0	146.2	70.6	146.0	73.5	145.8	75.6	145.6	77.3	145.5	78.6	142.1	79.6	8.3mx 135.0	80.0	8.8mx 125.0	80.0		
9.0	130.8	67.2	130.4	70.6	130.2	73.1	129.9	75.1	127.5	76.6	128.0	77.8	126.0	78.9	122.6	79.7	9.3mx 112.5	80.0
10.0	119.6	63.7	118.2	67.7	117.8	70.6	117.2	72.9	115.5	74.6	115.0	76.1	114.5	77.2	112.6	78.2	107.2	79.1
12.0	93.9	56.2	93.8	61.6	92.6	65.4	92.3	68.3	92.0	70.6	91.7	72.4	91.6	73.9	91.3	75.2	91.1	76.3
14.0	75.7	47.9	75.4	55.1	75.2	60.0	75.1	63.6	74.3	66.5	74.1	68.7	74.0	70.6	73.9	72.1	73.8	73.5
16.0	63.2	38.4	62.9	48.0	62.7	54.2	62.5	58.8	61.7	62.2	61.6	64.9	61.5	67.2	61.3	69.0	61.2	70.6
18.0	52.0	30.0	54.1	39.9	53.8	48.0	53.4	53.6	52.6	57.7	52.4	61.0	52.4	63.6	52.1	65.8	52.0	67.6
20.0	42.0		47.2	30.0	46.9	41.1	46.7	48.0	45.7	53.1	45.5	56.9	45.5	60.0	45.2	62.5	45.1	64.6
22.0					41.4	32.9	41.2	41.9	40.4	48.0	40.1	52.6	40.0	56.2	39.7	59.1	39.6	61.6
24.0					22.6mx 39.8	30.0	36.2	34.9	36.0	42.6	35.9	48.1	35.6	52.3	35.4	55.6	35.2	58.4
26.0							25.2mx 33.9	30.0	32.4	36.5	32.2	43.1	32.2	48.1	31.8	51.9	31.6	55.1
28.0									27.6mx 29.8	30.0	29.2	37.7	29.2	43.6	29.0	48.1	28.6	51.7
30.0											26.6	31.4	26.6	38.7	26.4	43.9	26.2	48.1
32.0											30.4mx 26.1	30.0	24.3	33.1	24.2	39.5	24.0	44.3
34.0													33.0mx 23.1	30.0	22.2	34.5	22.1	40.1
36.0															35.6mx 20.6	30.0	20.3	35.6
38.0																	18.8	30.6
40.0																	38.2mx 18.7	30.0
No. of Part line	16		16		14		14		12		12		10		10		9	

(unit : t)

Boom length (m)	45.0		48.0		51.0		54.0		57.0		60.0		63.0		66.0		69.0		72.0	
	Load	Angle	Load	Angle	Load	Angle	Load	Angle	Load	Angle	Load	Angle	Load	Angle	Load	Angle	Load	Angle	Load	Angle
Working radius (m)																				
9.0	9.9mx 108.0	80.0																		
10.0	105.7	79.8	104mx 93.1	80.0	11.7mx 87.5	79.0	11.4mx 81.0	80.0												
12.0	87.8	77.2	86.3	78.0	86.0	78.8	81.0	79.4	76.9	80.0	12.5mx 75.0	80.0	13.0mx 75.0	80.0	13.5mx 64.0	80.0				
14.0	73.8	74.6	71.6	75.6	71.3	76.4	70.1	77.2	70.0	77.9	70.0	78.5	69.8	79.1	62.9	79.6	62.9	80.0	14.6mx 55.0	80.0
16.0	61.2	71.9	60.9	73.1	60.8	74.1	60.5	75.0	60.3	75.8	58.2	76.6	58.1	77.2	57.9	77.8	57.7	78.3	52.1	78.8
18.0	52.0	69.2	51.8	70.6	51.6	71.8	51.3	72.8	51.2	73.7	51.0	74.6	49.3	75.3	49.0	76.0	48.9	76.6	48.4	77.2
20.0	45.0	66.5	44.8	68.0	44.6	69.4	44.4	70.6	44.2	71.6	44.1	72.6	43.9	73.4	43.7	74.2	42.2	74.9	42.3	75.6
22.0	39.5	63.6	39.3	65.4	39.1	66.9	38.9	68.3	38.7	69.5	38.6	70.6	38.4	71.5	38.2	72.4	38.0	73.2	37.1	73.9
24.0	35.2	60.7	34.9	62.7	34.7	64.5	34.5	66.0	34.3	67.3	34.2	68.5	34.0	69.6	33.7	70.6	33.5	71.4	33.4	72.2
26.0	31.5	57.8	31.3	60.0	31.1	61.9	30.8	63.6	30.7	65.1	30.5	66.4	30.3	67.6	30.1	68.7	29.9	69.7	29.9	70.6
28.0	28.5	54.7	28.3	57.2	28.0	59.3	27.8	61.2	27.6	62.9	27.5	64.3	27.3	65.6	27.1	66.8	26.8	67.9	26.9	68.9
30.0	26.1	51.5	25.7	54.3	25.5	56.7	25.3	58.8	25.0	60.6	24.9	62.2	24.7	63.6	24.4	64.9	24.2	66.1	24.6	67.1
32.0	23.9	48.1	23.7	51.3	23.3	53.9	23.0	56.2	22.8	58.2	22.7	60.0	22.5	61.6	22.2	63.0	22.0	64.2	22.4	65.4
34.0	22.0	44.5	21.7	48.1	21.5	51.1	21.1	53.6	20.8	55.8	20.7	57.8	20.6	59.5	20.3	61.0	20.0	62.4	20.5	63.6
36.0	20.2	40.7	20.0	44.8	19.8	48.1	19.6	50.9	19.2	53.3	19.0	55.5	18.8	57.3	18.6	59.0	18.4	60.5	18.8	61.8
38.0	18.7	36.6	18.5	41.2	18.3	45.0	18.1	48.1	18.0	50.8	17.5	53.1	17.4	55.1	17.1	56.9	16.8	58.5	17.3	60.0
40.0	17.4	32.0	17.2	37.4	17.1	41.7	16.7	45.2	16.6	48.1	16.4	50.6	16.0	52.9	15.8	54.8	15.5	56.6	16.0	58.1
42.0	40.8mx 16.9	30.0	16.0	33.2	15.8	38.1	15.6	42.1	15.4	45.3	15.2	48.1	15.1	50.5	14.5	52.7	14.3	54.5	14.7	56.2
44.0			43.4mx 15.2	30.0	14.7	34.3	14.5	38.8	14.3	42.4	14.1	45.5	14.0	48.1	13.7	50.4	13.2	52.5	13.6	54.3
46.0					13.8	30.0	13.5	35.2	13.3	39.3	13.1	42.7	13.0	45.6	12.7	48.1	12.4	50.3	12.6	52.3
48.0							12.7	31.3	12.4	36.0	12.2	39.8	12.1	43.0	11.8	45.7	11.5	48.1	11.7	50.2
50.0							48.6mx 12.4	30.0	11.6	32.3	11.4	36.7	11.2	40.2	11.0	43.2	10.7	45.8	10.9	48.1
52.0									51.2mx 11.1	30.0	10.7	33.3	10.5	37.3	10.3	40.6	9.9	43.5	10.2	45.9
54.0											53.8mx 9.9	30.0	9.8	34.1	9.5	37.8	9.2	41.0	9.5	43.7
56.0													9.1	30.7	8.8	34.9	8.5	38.3	8.7	41.3
58.0													56.4mx 9.0	30.0	8.2	31.7	7.9	35.6	7.8	38.8
60.0															59.0mx 7.9	30.0	7.3	32.6	7.1	36.2
62.0																	61.6mx 6.8	30.0	6.5	33.3
64.0																			6.0	30.3
66.0																			64.2mx 6.0	30.0
No. of Part line	8		7		7		6		6		6		6		5		5		5	

**(Note)**

- All rated loads are based on the machine being operated on the firm, level, uniformly supporting surface ground, at any point of 360° around the machine within 75% of tipping load and applied load 1.25P+0.1F.
- The figure enclosed within bold lines in this table are the values determined based on the strength of the boom, etc.
- The working radius refers to the horizontal distance from the center of swinging to the hook axis.
- For the operation, be sure to raise the A-frame.
- The length of the jib which can be mounted to the boom is as shown below:

Jib length(m)	Aux. Jib	13	19	25	31	37
Boom length(m)		18~72	45~72	45~72	45~72	45~72

- The actual lifting load is obtained by subtracting the mass of all lifting equipment such as the main hook, aux. hook, etc. from the values given in this table.  
 250t Hook...3.5t    135t Hook...2.9t    90t Hook...1.6t    35t Hook...1.1t    13.5t Swivel hook...0.2t  
 200t Hook...3.0t    125t Hook...2.4t    60t Hook...1.4t    13.5t Hook...0.6t
- When the jib is mounted, the rated load with the main hook is obtained by subtracting the value as shown below (including the mass of the aux. hook) from the values given in this table.

Jib length(m)	Aux. Jib	13	19	25	31	37
Subtraction mass(t)		1.0	3.5	4.0	4.9	6.0

- The rated load of the aux. jib is obtained by subtracting 0.4t from the values given in this table corresponding to the length of the mounted boom.  
 But the max. rated load is 13.5t.  
 The rated load with the jib of 13.0m to 37.0m long refers to the jib rated load table.
- When the main hook is mounted the load which can be lifted with the jib is given by subtracting the total mass of main and aux. hooks from the value in this table.
- The rated load are limited according to the wire rope part line as shown below:  
 1 part of line ... up to 13.5t    5 part of line ... up to 67.5t    9 part of line ... up to 121.5t    13 part of line ... up to 175.5t  
 2 part of line ... up to 27.0t    6 part of line ... up to 81.0t    10 part of line ... up to 135.0t    14 part of line ... up to 189.0t  
 3 part of line ... up to 40.5t    7 part of line ... up to 94.5t    11 part of line ... up to 148.5t    15 part of line ... up to 202.5t  
 4 part of line ... up to 54.0t    8 part of line ... up to 108.0t    12 part of line ... up to 162.0t    16 part of line ... up to 250.0t

Aux. Jib Rated Lifting Loads

WITH STANDARD BOOM (92.0t Counterweight + 19.0t Carbody weight)

(unit : t)

Working radius (m) \ Boom length (m)	18.0	21.0	24.0	27.0	30.0	33.0	36.0	39.0	42.0	45.0	48.0	51.0	54.0	57.0	60.0	63.0	66.0	69.0	72.0
6.0	6.0mx 13.5	6.5mx 13.5																	
7.0	13.5	13.5	7.1mx 13.5	7.6mx 13.5															
8.0	13.5	13.5	13.5	13.5	8.1mx 13.5	8.6mx 13.5													
9.0	13.5	13.5	13.5	13.5	13.5	13.5	9.1mx 13.5	9.7mx 13.5											
10.0	13.5	13.5	13.5	13.5	13.5	13.5	13.5	13.5	10.2mx 13.5	10.7mx 13.5	11.2mx 13.5	11.7mx 13.5							
12.0	13.5	13.5	13.5	13.5	13.5	13.5	13.5	13.5	13.5	13.5	13.5	13.5	12.3mx 13.5	12.8mx 13.5	13.3mx 13.5	13.8mx 13.5			
14.0	13.5	13.5	13.5	13.5	13.5	13.5	13.5	13.5	13.5	13.5	13.5	13.5	13.5	13.5	13.5	13.5	14.3mx 13.5	14.9mx 13.5	15.4mx 13.5
16.0	13.5	13.5	13.5	13.5	13.5	13.5	13.5	13.5	13.5	13.5	13.5	13.5	13.5	13.5	13.5	13.5	13.5	13.5	13.5
18.0	13.5	13.5	13.5	13.5	13.5	13.5	13.5	13.5	13.5	13.5	13.5	13.5	13.5	13.5	13.5	13.5	13.5	13.5	13.5
20.0	19.0mx 13.5	13.5	13.5	13.5	13.5	13.5	13.5	13.5	13.5	13.5	13.5	13.5	13.5	13.5	13.5	13.5	13.5	13.5	13.5
22.0		21.5mx 13.5	13.5	13.5	13.5	13.5	13.5	13.5	13.5	13.5	13.5	13.5	13.5	13.5	13.5	13.5	13.5	13.5	13.5
24.0			13.5	13.5	13.5	13.5	13.5	13.5	13.5	13.5	13.5	13.5	13.5	13.5	13.5	13.5	13.5	13.5	13.5
26.0			24.1mx 13.5	13.5	13.5	13.5	13.5	13.5	13.5	13.5	13.5	13.5	13.5	13.5	13.5	13.5	13.5	13.5	13.5
28.0			26.7mx 13.5	13.5	13.5	13.5	13.5	13.5	13.5	13.5	13.5	13.5	13.5	13.5	13.5	13.5	13.5	13.5	13.5
30.0				29.3mx 13.5	13.5	13.5	13.5	13.5	13.5	13.5	13.5	13.5	13.5	13.5	13.5	13.5	13.5	13.5	13.5
32.0					31.9mx 13.5	13.5	13.5	13.5	13.5	13.5	13.5	13.5	13.5	13.5	13.5	13.5	13.5	13.5	13.5
34.0						13.5	13.5	13.5	13.5	13.5	13.5	13.5	13.5	13.5	13.5	13.5	13.5	13.5	13.5
36.0							34.5mx 13.5	13.5	13.5	13.5	13.5	13.5	13.5	13.5	13.5	13.5	13.5	13.5	13.5
38.0								37.1mx 13.5	13.5	13.5	13.5	13.5	13.5	13.5	13.5	13.5	13.5	13.5	13.5
40.0									39.7mx 13.5	13.5	13.5	13.5	13.5	13.5	13.5	13.5	13.5	13.5	13.5
42.0										13.5	13.5	13.5	13.5	13.5	13.5	13.5	13.5	13.5	13.5
44.0									42.3mx 13.5	13.5	13.5	13.5	13.5	13.5	13.5	13.5	13.5	13.5	13.5
46.0										44.9mx 13.5	13.4	13.1	12.9	12.7	12.6	12.3	12.0	12.2	12.2
48.0											47.5mx 12.7	12.3	12.0	11.8	11.7	11.4	11.1	11.3	11.3
50.0												11.3	11.2	11.0	10.8	10.6	10.3	10.5	10.5
52.0													50.1mx 11.3	10.3	10.1	9.9	9.5	9.8	9.8
54.0														52.7mx 10.1	9.5	9.4	9.1	8.7	9.1
56.0															55.3mx 9.0	8.7	8.4	8.1	8.3
58.0																57.9mx 8.1	7.8	7.4	7.4
60.0																	7.2	6.8	6.7
62.0																		60.5mx 7.1	6.2
64.0																			63.1mx 5.9
66.0																			65.7mx 5.0
No. of Part line	1	1	1	1	1	1	1	1	1	1	1	1	1	1	1	1	1	1	1

(Note)

- All rated loads are based on the machine being operated on the firm, level, uniformly supporting surface ground, at any point of 360° around the machine within 75% of tipping load and applied load 1.25P+0.1F.
- The working radius refers to the horizontal distance from the center of swinging to the hook axis.
- The actual lifting load is obtained by subtracting the mass of all lifting equipment such as the main hook, aux. hook, etc. from the values given in this table.
 

250t Hook...3.5t	135t Hook...2.9t	90t Hook...1.6t	35t Hook...1.1t	13.5t Swivel hook...0.2t
200t Hook...3.0t	125t Hook...2.4t	60t Hook...1.4t	13.5t Hook...0.6t	



## Light Boom Rated Lifting Loads(92.0t Counterweight + 19.0t Carbody weight)

(unit : t)

Boom length (m)	72.0		75.0		78.0		81.0		84.0		87.0		90.0		93.0	
	Load	Angle	Load	Angle	Load	Angle	Load	Angle	Load	Angle	Load	Angle	Load	Angle	Load	Angle
14.0	<b>14.4m× 37.5</b>	<b>80.0</b>	<b>14.9m× 35.0</b>	<b>80.0</b>	<b>15.4m× 33.5</b>	<b>80.0</b>	<b>16.0m× 31.5</b>	<b>80.0</b>								
16.0	<b>37.5</b>	<b>78.7</b>	<b>35.0</b>	<b>79.2</b>	<b>33.5</b>	<b>79.6</b>	<b>31.5</b>	<b>79.6</b>	<b>16.5m× 27.0</b>	<b>80.0</b>	<b>17.0m× 25.0</b>	<b>80.0</b>	<b>17.5m× 22.6</b>	<b>80.0</b>	<b>18.0m× 21.0</b>	<b>80.0</b>
18.0	36.1	77.1	34.0	77.6	31.8	78.1	30.3	78.5	27.0	78.2	25.0	78.3	22.6	79.0	<b>18.2m× 21.0</b>	79.9
20.0	34.2	75.4	32.6	76.0	30.3	76.6	29.3	77.1	27.0	77.6	25.0	77.9	22.6	78.3	20.2	78.7
22.0	32.5	73.8	31.2	74.4	29.0	75.1	27.9	75.6	26.6	76.1	24.2	76.6	21.5	77.0	19.4	77.5
24.0	31.0	72.1	29.8	72.9	27.7	73.5	26.7	74.2	25.6	74.7	23.0	75.2	20.4	75.7	18.3	76.2
26.0	29.4	70.4	28.3	71.2	26.6	72.0	25.6	72.7	24.5	73.3	21.9	73.8	19.4	74.4	17.4	74.9
28.0	27.2	68.7	26.5	69.6	25.4	70.4	24.5	71.2	23.5	71.9	20.8	72.5	18.5	73.1	16.5	73.6
30.0	24.6	67.0	24.4	68.0	24.1	68.9	23.5	69.7	22.5	70.4	19.7	71.1	17.6	71.7	15.8	72.3
32.0	22.6	65.3	22.5	66.3	22.4	67.3	22.2	68.2	21.1	69.0	18.7	69.6	16.8	70.4	15.0	71.0
34.0	21.0	63.5	20.8	64.6	20.6	65.7	20.4	66.6	19.8	67.5	17.8	68.2	15.9	69.0	14.3	69.7
36.0	19.5	61.7	19.2	62.9	19.1	64.1	18.9	65.1	18.6	66.0	16.9	66.8	15.1	67.6	13.6	68.4
38.0	18.0	59.9	17.8	61.2	17.7	62.4	17.6	63.5	17.5	64.5	15.9	65.3	14.3	66.2	13.0	67.0
40.0	16.7	58.0	16.5	59.4	16.4	60.7	16.3	61.9	16.4	63.0	15.0	63.9	13.5	64.8	12.3	65.7
42.0	15.5	56.1	15.4	57.6	15.3	59.0	15.2	60.3	15.1	61.5	14.1	62.4	12.8	63.4	11.7	64.3
44.0	14.4	54.2	14.3	55.8	14.2	57.3	14.1	58.6	14.0	59.9	13.2	60.9	12.1	61.9	11.2	62.9
46.0	13.4	52.2	13.3	53.9	13.2	55.5	13.1	57.0	13.0	58.3	12.4	59.4	11.5	60.5	10.7	61.5
48.0	12.7	50.1	12.6	52.0	12.4	53.7	12.3	55.3	12.2	56.7	11.8	57.8	10.9	59.0	10.3	60.1
50.0	11.9	48.0	11.8	50.0	11.6	51.9	11.5	53.5	11.5	55.0	11.1	56.2	10.4	57.5	9.9	58.7
52.0	11.2	45.8	11.1	48.0	11.0	50.0	10.9	51.7	10.8	53.3	10.4	54.6	9.9	56.0	9.4	57.2
54.0	10.4	43.5	10.4	45.9	10.3	48.0	10.2	49.9	10.1	51.6	9.8	53.0	9.3	54.4	9.0	55.7
56.0	9.8	41.2	9.7	43.7	9.6	46.0	9.5	48.0	9.4	49.8	9.2	51.3	8.7	52.8	8.3	54.2
58.0	9.1	38.7	9.1	41.5	8.9	43.9	8.8	46.1	8.8	48.0	8.5	49.6	8.2	51.2	7.7	52.7
60.0	8.5	36.0	8.5	39.1	8.4	41.7	8.2	44.1	8.2	46.2	7.9	47.8	7.6	49.5	7.2	51.1
62.0	7.9	33.2	7.9	36.6	7.8	39.5	7.8	42.0	7.6	44.2	7.4	46.0	7.0	47.8	6.6	49.5
64.0	7.4	30.2	7.3	33.9	7.3	37.1	7.3	39.8	7.1	42.2	7.0	44.1	6.5	46.0	6.1	47.8
66.0	<b>64.1m× 7.3</b>	30.0	6.8	31.1	6.8	34.6	6.8	37.6	6.6	40.1	6.5	42.1	6.1	44.2	5.6	46.1
68.0			<b>66.7m× 6.7</b>	30.0	6.3	31.9	6.4	35.2	6.1	38.0	6.0	40.1	5.7	42.4	5.1	44.4
70.0					<b>69.3m× 6.0</b>	30.0	5.9	32.6	5.6	35.7	5.6	38.0	5.3	40.4	4.6	42.6
72.0							<b>71.9m× 5.5</b>	30.0	5.2	33.3	5.2	35.8	4.8	38.4	4.1	40.7
74.0									4.8	30.7	4.7	33.5	4.4	36.3	3.6	38.7
76.0									<b>74.5m× 4.6</b>	30.0	4.3	31.0	4.0	34.1	3.1	36.7
78.0											<b>76.7m× 3.7</b>	30.0	3.6	31.7	2.7	34.6
80.0													<b>79.3m× 2.4</b>	30.0	2.3	32.3
No. of Part line	3		3		3		3		3		2		2		2	

(Note)

- All rated loads are based on the machine being operated on the firm, level, uniformly supporting surface ground, at any point of 360° around the machine within 75% of tipping load and applied load 1.25P+0.1F.
- The figure enclosed within bold lines in this table are the values determined based on the strength of the boom, etc.
- The working radius refers to the horizontal distance from the center of swinging to the hook axis.
- For the operation, be sure to raise the A-frame.
- The length of the boom which can be mounted with the aux. jib is 72.0m~90.0m.
- The actual lifting load is obtained by subtracting the mass of all lifting equipment such as the main hook, aux. hook, etc. from the values given in this table.  
60t Hook...1.4t    35t Hook...1.1t    13.5t Hook...0.6t
- When the aux. jib is mounted, rated load with the main hook is obtained by subtracting 0.8t (including the mass of the aux. hook) from the values given in this table.
- The rated load of the aux. jib is obtained by subtracting 0.4t from the values given in this table corresponding to the length of the mounted boom. But the max. rated load is 13.5t.
- When the main hook is mounted the load which can be lifted with the jib is given by subtracting the total mass of main and aux. hooks from the value in this table.
- The rated load are limited according to the wire rope part line as shown below :  
1 part of line ... up to 13.5t    2 part of line ... up to 25.0t    3 part of line ... up to 37.5t

**Aux. Jib Rated Lifting Loads**

**WITH LIGHT BOOM (92.0t Counterweight + 19.0t Carbody weight)**

(unit : t)

Working radius (m) \ Boom length (m)	72.0	75.0	78.0	81.0	84.0	87.0	90.0
14.0	15.2m <sup>x</sup> 13.5	15.7m <sup>x</sup> 13.5					
16.0	13.5	13.5					
18.0	13.5	13.5	16.3m <sup>x</sup> 13.5	16.8m <sup>x</sup> 13.5	17.3m <sup>x</sup> 13.5	17.8m <sup>x</sup> 13.5	
20.0	13.5	13.5	13.5	13.5	13.5	13.5	18.3m <sup>x</sup> 13.5
22.0	13.5	13.5	13.5	13.5	13.5	13.5	13.5
24.0	13.5	13.5	13.5	13.5	13.5	13.5	13.5
26.0	13.5	13.5	13.5	13.5	13.5	13.5	13.5
28.0	13.5	13.5	13.5	13.5	13.5	13.5	13.5
30.0	13.5	13.5	13.5	13.5	13.5	13.5	13.5
32.0	13.5	13.5	13.5	13.5	13.5	13.5	13.5
34.0	13.5	13.5	13.5	13.5	13.5	13.5	13.5
36.0	13.5	13.5	13.5	13.5	13.5	13.5	13.5
38.0	13.5	13.5	13.5	13.5	13.5	13.5	13.5
40.0	13.5	13.5	13.5	13.5	13.5	13.5	13.1
42.0	13.5	13.5	13.5	13.5	13.5	13.5	12.4
44.0	13.5	13.5	13.5	13.5	13.5	13.5	11.7
46.0	13.0	12.9	12.8	12.7	12.6	12.0	11.1
48.0	12.3	12.2	12.0	11.9	11.8	11.4	10.5
50.0	11.5	11.4	11.2	11.1	11.1	10.7	10.0
52.0	10.8	10.7	10.6	10.5	10.4	10.0	9.5
54.0	10.0	10.0	9.9	9.8	9.7	9.4	8.9
56.0	9.4	9.3	9.2	9.1	9.0	8.8	8.3
58.0	8.7	8.7	8.5	8.4	8.4	8.1	7.8
60.0	8.1	8.1	8.0	7.8	7.8	7.5	7.2
62.0	7.5	7.5	7.4	7.4	7.2	7.0	6.6
64.0	7.0	6.9	6.9	6.9	6.7	6.6	6.1
66.0	65.8m <sup>x</sup> 6.7	6.4	6.4	6.4	6.2	6.1	5.7
68.0		6.3	5.9	6.0	5.7	5.6	5.3
70.0		68.2m <sup>x</sup> 6.0	5.6	5.5	5.2	5.2	4.9
72.0			70.8m <sup>x</sup> 5.3	5.1	4.8	4.8	4.4
74.0				73.4m <sup>x</sup> 4.9	4.4	4.3	4.0
76.0					3.9	3.9	3.6
78.0						3.7	3.2
80.0						78.8m <sup>x</sup> 3.4	2.9
No. of Part line	1	1	1	1	1	1	1

(Note)

1. All rated loads are based on the machine being operated on the firm, level, uniformly supporting surface ground, at any point of 360° around the machine within 75% of tipping load and applied load 1.25P+0.1F.
2. The working radius refers to the horizontal distance from the center of swinging to the hook axis.
3. The actual lifting load is obtained by subtracting the mass of all lifting equipment such as the main hook, aux. hook, etc. from the values given in this table.  
All lifting equipment such as the main hook, aux. hook, etc. from the values given in this table.

60t Hook...1.4t      35t Hook...1.1t      13.5t Hook...0.6t

# Crane Jib Rated Lifting Loads

WITH STANDARD BOOM (92.0t Counterweight + 19.0t Carbody weight)

(unit : t)

Boom length (m) Jib length (m) Jib offset angle Working radius (m)	45.0										48.0											
	13.0		19.0		25.0		31.0		37.0		13.0		19.0		25.0		31.0		37.0			
	10°	30°	10°	30°	10°	30°	10°	30°	10°	30°	10°	30°	10°	30°	10°	30°	10°	30°	10°	30°		
14.0	27.0																					
16.0	27.0		16.5m×24.9									15.0m×27.0		17.0m×24.9								
18.0	27.0	21.7	24.4			18.5m×13.5						27.0	18.5m×21.7	24.5		19.0m×13.5						
20.0	27.0	20.6	23.6			13.2		20.5m×7.9				27.0	20.9	23.8		13.3		21.0m×				
22.0	27.0	19.7	22.9			22.5m×13.5	12.7		7.6		22.5m×4.7		27.0	20.0	23.1	23.0m×13.5			7.7	23.0m×4.7		
24.0	27.0	18.8	22.3	13.5	12.3			7.3			4.6		27.0	19.2	22.5	13.5	12.4		7.4	4.6		
26.0	27.0	18.1	21.6	13.5	11.9	9.1	7.0				4.3		27.0	18.4	21.9	13.5	12.1	26.5m×9.1	7.1	4.4		
28.0	27.0	17.4	20.3	13.2	11.5	8.9	6.8				4.1		27.0	17.7	21.0	13.4	11.7	9.0	6.9			
30.0	27.0	16.7	19.1	12.7	11.2	8.7	6.5	4.9	3.9				27.0	17.1	19.7	12.9	11.3	8.8	6.6	30.5m×4.9		
32.0	24.9	16.2	18.0	12.3	10.9	8.5	6.3	4.7	3.7				24.7	16.5	18.7	12.5	11.0	8.6	6.4	4.7		
34.0	22.9	15.6	17.1	11.8	10.6	8.3	6.1	4.6	3.6	2.5			22.6	16.0	17.7	12.0	10.7	8.4	6.2	4.6		
36.0	21.0	15.2	16.2	11.4	10.3	8.2	5.9	4.5	3.4	2.4			20.8	15.5	16.8	11.7	10.4	8.2	6.0	4.5		
38.0	19.4	14.7	15.5	11.1	10.0	8.0	5.7	4.3	3.3	2.3			19.2	15.1	16.0	11.3	10.2	8.1	5.8	4.4		
40.0	18.0	14.4	14.8	10.7	9.8	7.9	5.5	4.2	3.1	2.2			17.7	14.7	15.3	11.0	9.9	7.9	5.6	4.3		
42.0	16.7	14.0	14.1	10.4	9.5	7.8	5.3	4.1	3.0	2.2			16.4	14.3	14.7	10.7	9.7	7.8	5.4	4.2		
44.0	15.6	13.7	13.6	10.2	9.3	7.6	5.1	4.0	2.9	2.1			15.3	14.0	14.1	10.4	9.5	7.7	5.2	4.1		
46.0	14.5	13.4	13.0	9.9	9.1	7.5	5.0	3.9	2.8	2.0			14.2	13.7	13.5	10.1	9.3	7.6	5.1	4.0		
48.0	13.6	13.2	12.5	9.7	8.9	7.4	4.8	3.9	2.6	1.9			13.3	13.4	13.0	9.9	9.1	7.5	4.9	3.9		
50.0	12.7	12.9	12.1	9.5	8.8	7.3	4.7	3.8	2.5	1.9			12.4	12.6	12.5	9.7	8.9	7.4	4.8	3.8		
52.0	11.9	12.0	11.7	9.3	8.6	7.2	4.6	3.7	2.4	1.8			11.6	11.8	12.1	9.5	8.7	7.3	4.7	3.8		
54.0	53.0m×11.5	53.5m×11.4	11.3	9.2	8.6	7.1	4.5	3.7	2.4	1.8			10.8	11.0	11.3	9.3	8.6	7.2	4.6	3.7		
56.0			10.9	9.0	8.5	6.9	4.4	3.6	2.3	1.7			55.5m×10.3	10.3	10.6	9.2	8.4	7.1	4.5	3.6		
58.0			10.3	8.9	8.4	6.8	4.3	3.6	2.2	1.7			56.5m×10.1	10.0	9.0	8.4	6.9	4.3	3.6	2.3		
60.0				8.9	8.2	6.7	4.2	3.6	2.1	1.6				9.4	9.0	8.4	6.8	4.3	3.5	2.2		
62.0					8.0	6.6	4.2	3.6	2.0	1.6				61.0m×9.1	8.9	8.3	6.7	4.2	3.5	2.1		
64.0					7.8	6.5	4.2	3.6	2.0	1.6					62.5m×8.8	8.1	6.6	4.1	3.5	2.0		
66.0					64.5m×7.8	6.5	4.1	3.6	1.9	1.5						7.9	6.5	4.1	3.5	2.0		
68.0							4.0	3.6	1.9	1.5						6.5	4.1	3.5	1.9	1.5		
70.0							4.0	3.6	1.9	1.5							68.5m×6.5	4.0	3.5	1.9	1.5	
72.0								3.6	1.9	1.5								4.0	3.5	1.8	1.5	
74.0									1.9	1.5									3.5	1.8	1.5	
76.0									75.0m×1.9	1.5									72.5m×4.0	1.8	1.5	
78.0										1.5									74.5m×3.5	1.8	1.5	
80.0																				77.5m×1.5	1.5	
82.0																					80.5m×1.5	1.5
No. of Part line	2	2	2	1	1	1	1	1	1	1	2	2	2	1	1	1	1	1	1	1	1	

Boom length (m) Jib length (m) Jib offset angle Working radius (m)	51.0										54.0										
	13.0		19.0		25.0		31.0		37.0		13.0		19.0		25.0		31.0		37.0		
	10°	30°	10°	30°	10°	30°	10°	30°	10°	30°	10°	30°	10°	30°	10°	30°	10°	30°	10°	30°	
14.0	15.5m×27.0																				
16.0	27.0		17.5m×24.9																		
18.0	27.0	19.0m×21.7	24.7			19.5m×13.5															
20.0	27.0	21.2	24.0			13.4		21.5m×7.9													
22.0	27.0	20.3	23.4			23.5m×13.5	13.0		7.8		23.5m×4.7										
24.0	27.0	19.5	22.7	13.5	12.6			7.5			4.7										24.5m×4.7
26.0	27.0	18.7	22.2	13.5	12.2	27.0m×9.1	7.2				4.4										4.5
28.0	27.0	18.0	21.6	13.5	11.8	9.0	6.9				4.2										4.3
30.0	26.8	17.4	20.4	13.1	11.5	8.8	6.7	31.0m×4.9			4.0										4.1
32.0	24.5	16.8	19.3	12.7	11.2	8.6	6.5	4.8	3.9												3.9
34.0	22.4	16.3	18.3	12.3	10.9	8.5	6.3	4.6	3.7	35.0m×2.5											35.5m×2.5
36.0	20.6	15.8	17.4	11.9	10.6	8.3	6.0	4.5	3.5	2.5											2.5
38.0	18.9	15.4	16.6	11.5	10.3	8.2	5.9	4.4	3.4	2.4											2.4
40.0	17.5	15.0	15.9	11.2	10.1	8.0	5.7	4.3	3.2	2.3											2.3
42.0	16.2	14.6	15.2	10.9	9.9	7.9	5.5	4.2	3.1	2.2											2.2
44.0	15.1	14.3	14.6	10.6	9.6	7.8	5.3	4.1	3.0	2.1											2.2
46.0	14.0	14.0	14.0	10.3	9.4	7.6	5.2	4.0	2.9	2.1											2.1
48.0	13.1	13.4	13.5	10.1	9.2	7.6	5.0	3.9	2.8	2.0											2.0
50.0	12.2	12.5	12.7	9.9	9.1	7.5	4.9	3.9	2.7	1.9											2.0
52.0	11.4	11.6	11.9	9.7	8.9	7.4	4.8	3.8	2.6	1.9											1.9
54.0	10.6	10.8	11.1	9.5	8.7	7.3	4.7	3.7	2.5	1.8											1.8
56.0	9.9	10.1	10.4	9.3	8.6	7.2	4.5	3.7	2.4	1.8											1.8
58.0	9.3	9.4	9.8	9.2	8.4	7.1	4.4	3.6	2.3	1.7											1.8
60.0			59.0m×9.1	9.2	9.1	8.3	6.9	4.3	3.6	2.2	1.7										1.7
62.0				8.6	8.8	8.3	6.8	4.2	3.5	2.2	1.6										1.7
64.0				8.0	8.2	8.3	6.7	4.2	3.5	2.1	1.6										1.6
66.0					65.0m×7.9	7.9	6.6	4.1	3.5	2.0	1.6										1.6
68.0						7.4	6.5	4.0	3.5	2.0	1.5										1.6
70.0						69.5m×7.0	6.5	4.0	3.5	1.9	1.5										1.5
72.0							71.0m×6.5	4.0	3.5	1.9	1.5										1.5
74.0								4.0	3.5	1.8	1.5										1.5
76.0								75.0m×4.0	3.5	1.8	1.5										1.5
78.0									77.0m×3.5	1.8	1.5										1.5
80.0										1.8	1.5										1.5
82.0											1.5										1.5
84.0												83.0m×1.5									1.5
86.0																					1.5
No. of Part line	2	2	2	1	1	1	1	1	1	1	2	2	2	1	1	1	1	1	1	1	1

Crane Jib Rated Lifting Loads

WITH STANDARD BOOM (92.0t Counterweight + 19.0t Carbody weight)

(unit : t)

Boom length (m)	57.0										60.0									
	13.0		19.0		25.0		31.0		37.0		13.0		19.0		25.0		31.0		37.0	
	Jib offset angle		Jib offset angle		Jib offset angle		Jib offset angle		Jib offset angle		Jib offset angle		Jib offset angle		Jib offset angle		Jib offset angle		Jib offset angle	
Working radius (m)	10°	30°	10°	30°	10°	30°	10°	30°	10°	30°	10°	30°	10°	30°	10°	30°	10°	30°	10°	30°
16.0	16.5m x 27.0										17.0m x 27.0									
18.0	27.0		18.5m x 24.9								27.0		19.5m x 24.7							
20.0	27.0	21.8	24.4			20.5m x 13.5					27.0	21.0m x 21.6	24.5		21.0m x 13.5					
22.0	27.0	20.9	23.7			13.2					27.0	21.1	23.9		13.3			23.0m x 7.8		
24.0	27.0	20.1	23.1			24.5m x 13.5	12.8			7.6		25.0m x 4.6			25.0m x 13.5	12.9		7.7		25.5m x 4.6
26.0	27.0	19.3	22.6			13.5	12.4			7.4		4.5			27.0	19.6	22.8	13.5	12.5	7.4
28.0	27.0	18.6	22.1			13.5	12.1	9.1		7.1		4.3			27.0	18.9	22.3	13.5	12.2	28.5m x 9.1
30.0	26.4	18.0	21.6			13.5	11.7	8.9		6.9		4.1			26.1	18.3	21.8	13.5	11.9	8.9
32.0	24.0	17.5	20.4			13.1	11.4	8.7		6.6	4.8	4.0			23.7	17.7	21.0	13.2	11.6	8.8
34.0	21.9	16.9	19.4			12.7	11.2	8.6		6.4	4.7	3.8			21.7	17.2	20.0	12.8	11.3	8.6
36.0	20.1	16.4	18.5			12.3	10.9	8.4		6.2	4.6	3.7	2.5		19.8	16.7	19.0	12.4	11.0	8.5
38.0	18.4	16.0	17.6			11.9	10.6	8.3		6.0	4.5	3.5	2.4		18.2	16.3	18.2	12.1	10.7	8.3
40.0	17.0	15.6	16.9			11.6	10.4	8.1		5.9	4.4	3.4	2.3		16.8	15.9	17.4	11.8	10.5	8.2
42.0	15.7	15.2	16.2			11.3	10.1	8.0		5.7	4.3	3.2	2.2		15.5	15.5	16.1	11.4	10.3	8.1
44.0	14.6	14.8	15.1			11.0	9.9	7.9		5.5	4.2	3.1	2.2		14.3	14.8	14.9	11.2	10.1	7.9
46.0	13.5	13.9	14.0			10.7	9.7	7.8		5.4	4.1	3.0	2.1		13.3	13.7	13.8	10.9	9.8	7.8
48.0	12.5	12.9	13.1			10.5	9.5	7.7		5.2	4.0	2.9	2.0		12.3	12.7	12.8	10.6	9.7	7.7
50.0	11.7	12.0	12.2			10.2	9.3	7.6		5.1	3.9	2.8	2.0		11.4	11.8	12.0	10.4	9.5	7.6
52.0	10.9	11.2	11.4			10.0	9.2	7.5		5.0	3.9	2.7	1.9		10.6	11.0	11.1	10.2	9.3	7.5
54.0	10.1	10.4	10.6			9.8	9.0	7.4		4.8	3.8	2.6	1.9		9.8	10.2	10.4	10.0	9.1	7.4
56.0	9.4	9.7	9.9			9.6	8.8	7.3		4.7	3.7	2.5	1.8		9.1	9.4	9.7	9.8	9.0	7.4
58.0	8.7	8.9	9.3			9.5	8.7	7.3		4.6	3.7	2.4	1.8		8.4	8.7	9.0	9.4	8.8	7.3
60.0	8.0	8.3	8.6			9.0	8.6	7.2		4.5	3.6	2.3	1.7		7.8	8.0	8.3	8.7	8.7	7.2
62.0	7.4	7.6	8.0			8.3	8.4	7.0		4.4	3.6	2.3	1.7		7.2	7.4	7.7	8.1	8.2	7.2
64.0	63.5m x 7.9	7.0	7.4			7.7	7.9	6.9		4.3	3.5	2.2	1.6		6.6	6.8	7.1	7.5	7.6	7.0
66.0			6.9			7.1	7.3	6.8		4.2	3.5	2.1	1.6		6.1	6.2	6.6	6.9	7.1	6.9
68.0			6.4			6.6	6.8	6.7		4.2	3.5	2.1	1.6		67.0m x 5.9	6.1	6.4	6.6	6.8	6.4
70.0			6.0			6.3	6.6	6.4		4.1	3.4	2.0	1.6		5.6	5.8	6.1	6.4	6.4	6.1
72.0			70.5m x 5.9			5.9	6.2	6.0		4.0	3.4	2.0	1.5		71.5m x 5.3	5.3	5.6	5.9	6.1	5.9
74.0						5.5	5.7	5.5		3.9	3.4	1.9	1.5			73.0m x 5.1	5.2	5.5	5.4	5.4
76.0						76.0m x 5.3	5.2	5.2		3.9	3.4	1.9	1.5				4.8	5.0	4.9	4.9
78.0						76.5m x 5.1	3.9	3.4		1.8	1.5						77.5m x 4.5	4.6	4.6	4.6
80.0							3.9	3.4		1.8	1.5							79.0m x 4.3	3.9	3.9
82.0							80.5m x 3.9	3.4		1.7	1.5								3.9	3.4
84.0								82.5m x 3.4		1.7	1.5								83.0m x 3.8	3.4
86.0										85.5m x 1.7										85.0m x 3.4
88.0																				89.0m x 1.7
90.0																				
No. of Part line	2	2	2	1	1	1	1	1	1	1	1	1	2	2	2	1	1	1	1	1

(unit : t)

Boom length (m)	63.0										66.0									
	13.0		19.0		25.0		31.0		37.0		13.0		19.0		25.0		31.0		37.0	
	Jib offset angle		Jib offset angle		Jib offset angle		Jib offset angle		Jib offset angle		Jib offset angle		Jib offset angle		Jib offset angle		Jib offset angle		Jib offset angle	
Working radius (m)	10°	30°	10°	30°	10°	30°	10°	30°	10°	30°	10°	30°	10°	30°	10°	30°	10°	30°	10°	30°
16.0	17.5m x 27.0																			
18.0	27.0																			
20.0	27.0	21.5m x 21.6	24.7			21.5m x 13.5														
22.0	27.0	21.4	24.1			13.4														
24.0	27.0	20.6	23.5			25.5m x 13.5	13.0			7.8									24.5m x 7.8	
26.0	27.0	19.9	23.0			13.5	12.6			7.5									7.6	26.5m x 4.6
28.0	27.0	19.2	22.4			13.5	12.3	29.0m x 9.1	7.2			4.4							7.3	4.5
30.0	25.9	18.6	22.0			13.5	12.0	9.0	7.0			4.3							7.1	4.3
32.0	23.5	18.0	21.5			13.4	11.7	8.8	6.8			4.1							33.0m x 4.8	4.1
34.0	21.4	17.5	20.5			13.0	11.4	8.7	6.6	4.7	3.9								37.0m x 2.5	4.0
36.0	19.6	17.0	19.5			12.6	11.1	8.5	6.4	4.6	3.8								37.5m x 2.5	3.8
38.0	18.0	16.5	18.6			12.3	10.9	8.4	6.2	4.5	3.6	2.4							17.7	3.7
40.0	16.6	16.1	17.2			11.9	10.6	8.2	6.0	4.4	3.5	2.3	16.3	16.4	16.9	12.1	10.7	8.3	6.1	4.5
42.0	15.3	15.7	15.9			11.6	10.4	8.1	5.8	4.3	3.4	2.3	15.0	15.6	15.6	11.8	10.5	8.2	5.9	4.4
44.0	14.1	14.6	14.7			11.3	10.2	8.0	5.7	4.2	3.2	2.2	13.8	14.4	14.4	11.5	10.3	8.0	5.8	4.3
46.0	13.0	13.5	13.6			11.1	10.0	7.9	5.5	4.2	3.1	2.1	12.8	13.3	13.4	11.2	10.1	7.9	5.6	4.2
48.0	12.1	12.5	12.6			10.8	9.8	7.8	5.4	4.1	3.0	2.1	11.8	12.3	12.4	11.0	9.9	7.8	5.5	4.1
50.0	11.2	11.6	11.7			10.6	9.6	7.7	5.3	4.0	2.9	2.0	10.9	11.4	11.5	10.7	9.7	7.7	5.3	4.0
52.0	10.4	10.8	10.9			10.4	9.4	7.6	5.1	3.9	2.8	2.0	10.0	10.5	10.7	10.5	9.5	7.6	5.2	4.0
54.0	9.6	10.0	10.2			10.2	9.2	7.5	5.0	3.9	2.7	1.9	9.2	9.7	9.9	10.3	9.4	7.5	5.1	3.9
56.0	8.8	9.2	9.4			9.9	9.1	7.4	4.9	3.8	2.6	1.9	8.5	8.9	9.1	9.7	9.2	7.5	5.0	3.8
58.0	8.1	8.5	8.7			9.2	8.9	7.4	4.8	3.7	2.5	1.8	7.8	8.2	8.4	9.0	8.9	7.4	4.9	3.8
60.0	7.5	7.8	8.1			8.5	8.5	7.3	4.7	3.7	2.5	1.8	7.2	7.5	7.7	8.3	8.2	7.3	4.7	3.7
62.0	6.9	7.2	7.5			7.9	7.9	7.2	4.6	3.6	2.4	1.7	6.6	6.9	7.1	7.6	7.6	7.3	4.6	3.7
64.0	6.3	6.6	6.9			7.3	7.3	7.2	4.5	3.6	2.3	1.7	6.0	6.3	6.6	7.0	7.0	7.2	4.5	3.6
66.0	5.8	6.0	6.4			6.7	6.8	7.0	4.4	3.5	2.2	1.6	5.4	5.7	6.0	6.4	6.5	7.0	4.5	3.6
68.0	5.3	5.5	5.9			6.1	6.3	6.8	4.3	3.5	2.2	1.6	4.9	5.1	5.5	5.9	6.0	6.5	4.4	3.5
70.0	68.5m x 5.2	69.5m x 5.1	5.4			5.6	5.8	6.2	4.2	3.5	2.1	1.6	4.4	4.6	5.0	5.4	5.5	6.0	4.3	3.5
72.0			4.9			5.1	5.4	5.7	4.1	3.4	2.1	1.6		4.1	4.5	4.8	5.0	5.5	4.2	3.5
74.0			4.4			4.6	4.9	5.3	4.1	3.4	2.0	1.5			4.1	4.3	4.6	5.0	4.1	3.4
76.0						75.5m x 4.3	4.5	4.8	4.0	3.4	1.9	1.5			3.6	3.8	4.1	4.5	4.1	3.4
78.0							4.1	4.4	3.9	3.4	1.9	1.5			77.5m x 3.3	3.4	3.7	4.1	4.0	3.4
80.0							3.7	3.9	3.9	3.4	1.8	1.5					3.3	3.6	3.7	3.4
82.0							81.5m x 3.6	3.7</												

# Crane Jib Rated Lifting Loads

■ WITH STANDARD BOOM (92.0t Counterweight + 19.0t Carbody weight)

(unit : t)

Boom length (m) Jib length (m) Jib offset angle Working radius (m)	69.0										72.0										
	13.0		19.0		25.0		31.0		37.0		13.0		19.0		25.0		31.0		37.0		
	10°	30°	10°	30°	10°	30°	10°	30°	10°	30°	10°	30°	10°	30°	10°	30°	10°	30°	10°	30°	
18.0	18.9m× 27.9										19.0m× 27.0										
20.0	27.0		21.0m× 29.8								27.0		21.5m× 29.8								
22.0	27.0	22.5m× 21.8	24.4		23.0m× 13.4						27.0	23.0m× 21.8	24.5		23.5m× 13.5						
24.0	27.0	21.0	23.8		13.2		25.0m× 7.7				27.0	21.2	23.9		13.3		25.5m× 7.7				
26.0	27.0	20.3	23.3	26.5m× 13.5	12.8		7.6		27.0m× 4.6		27.0	20.6	23.4	27.0m× 13.5	12.9		7.7		27.5m× 4.6		
28.0	27.0	19.7	22.8	13.5	12.5		7.4		4.5		27.0	19.9	22.9	13.5	12.6		7.4		4.6		
30.0	25.5	19.1	22.3	13.5	12.2	30.5m× 9.0	7.1		4.3		25.2	19.3	22.5	13.5	12.3	31.0m× 9.0	7.2		4.4		
32.0	23.1	18.5	21.9	13.5	11.9	8.9	6.9		4.2		22.8	18.8	22.0	13.5	12.0	8.9	7.0		4.2		
34.0	21.0	18.0	21.5	13.3	11.6	8.7	6.7	4.8	4.0		20.7	18.2	21.5	13.5	11.7	8.8	6.8	34.5m× 4.8	4.1		
36.0	19.1	17.5	19.8	13.0	11.4	8.6	6.5	4.7	3.9		18.9	17.7	19.6	13.1	11.5	8.6	6.6	4.7	3.9		
38.0	17.5	17.1	18.2	12.6	11.1	8.4	6.3	4.6	3.7	2.4	17.3	17.3	18.0	12.8	11.2	8.5	6.4	4.6	3.8	38.5m× 2.4	
40.0	16.1	16.6	16.7	12.3	10.9	8.3	6.2	4.5	3.6	2.4	15.8	16.6	16.5	12.4	11.0	8.4	6.2	4.5	3.6	2.4	
42.0	14.8	15.4	15.4	12.0	10.6	8.2	6.0	4.4	3.5	2.3	14.5	15.2	15.2	12.1	10.8	8.2	6.1	4.4	3.5	2.3	
44.0	13.6	14.2	14.2	11.7	10.4	8.1	5.8	4.3	3.3	2.2	13.4	14.0	14.0	11.8	10.5	8.1	5.9	4.3	3.4	2.2	
46.0	12.5	13.1	13.1	11.4	10.2	8.0	5.7	4.2	3.2	2.2	12.3	12.9	12.9	11.6	10.3	8.0	5.8	4.2	3.3	2.2	
48.0	11.6	12.1	12.2	11.1	10.0	7.9	5.5	4.1	3.1	2.1	11.3	11.9	11.9	11.3	10.1	7.9	5.6	4.2	3.2	2.1	
50.0	10.6	11.2	11.3	10.9	9.8	7.8	5.4	4.1	3.0	2.1	10.4	11.0	11.0	11.1	9.9	7.8	5.5	4.1	3.1	2.1	
52.0	9.8	10.3	10.4	10.7	9.6	7.7	5.3	4.0	2.9	2.0	9.5	10.0	10.1	10.8	9.8	7.7	5.3	4.0	3.0	2.0	
54.0	9.0	9.4	9.6	10.3	9.5	7.6	5.2	3.9	2.8	1.9	8.7	9.2	9.3	10.1	9.6	7.6	5.2	4.0	2.9	2.0	
56.0	8.2	8.7	8.8	9.5	9.3	7.5	5.0	3.9	2.7	1.9	7.9	8.4	8.6	9.2	9.1	7.6	5.1	3.9	2.8	1.9	
58.0	7.5	7.9	8.1	8.7	8.6	7.4	4.9	3.8	2.6	1.8	7.2	7.7	7.9	8.5	8.4	7.5	5.0	3.8	2.7	1.9	
60.0	6.9	7.3	7.5	8.0	8.0	7.4	4.8	3.7	2.6	1.8	6.6	7.0	7.2	7.8	7.7	7.4	4.9	3.8	2.6	1.8	
62.0	6.3	6.6	6.9	7.4	7.3	7.3	4.7	3.7	2.5	1.8	6.0	6.4	6.6	7.1	7.1	7.3	4.8	3.7	2.5	1.8	
64.0	5.7	6.0	6.3	6.8	6.8	7.3	4.6	3.6	2.4	1.7	5.4	5.8	6.0	6.5	6.5	7.2	4.7	3.7	2.4	1.7	
66.0	5.1	5.4	5.8	6.2	6.2	6.8	4.5	3.6	2.3	1.7	4.8	5.2	5.5	5.9	6.0	6.6	4.6	3.6	2.4	1.7	
68.0	4.6	4.9	5.2	5.6	5.7	6.3	4.4	3.6	2.3	1.6	4.3	4.6	4.9	5.4	5.4	6.0	4.5	3.6	2.3	1.7	
70.0	4.1	4.3	4.7	5.1	5.2	5.8	4.4	3.5	2.2	1.6	3.8	4.0	4.4	4.8	4.9	5.5	4.4	3.5	2.2	1.7	
72.0	3.6	3.8	4.2	4.6	4.7	5.3	4.3	3.5	2.1	1.6	3.3	3.5	3.9	4.3	4.4	5.0	4.3	3.5	2.2	1.7	
74.0	3.2	3.3	3.8	4.1	4.3	4.8	4.2	3.5	2.1	1.5	2.8	3.0	3.5	3.8	4.0	4.5	4.3	3.5	2.1	1.7	
76.0		75.0m× 3.1	3.3	3.6	3.8	4.3	4.1	3.4	2.0	1.5	2.4	2.6	3.0	3.3	3.5	4.0	3.9	3.4	2.1	1.5	
78.0			2.9	3.1	3.4	3.8	3.8	3.4	2.0	1.5	77.0m× 2.2	77.0m× 2.3	2.6	2.9	3.1	3.6	3.5	3.4	2.1	1.5	
80.0			2.5	2.7	3.0	3.4	3.4	3.4	1.9	1.5			2.2	2.4	2.7	3.1	3.1	3.4	1.8	1.5	
82.0				81.0m× 2.5	2.6	2.9	3.1	3.4	1.9	1.5			1.8	2.0	2.3	2.7	2.7	3.3	1.8	1.5	
84.0					2.3	2.5	2.7	3.1	1.8	1.5				83.0m× 1.8	2.0	2.3	2.4	2.9	1.7	1.5	
86.0					86.0m× 2.1	2.1	2.4	2.7	1.8	1.4					1.6	1.9	2.0	2.5	1.7	1.4	
88.0							2.0	2.4	1.8	1.4							1.7	2.1	1.7	1.4	
90.0							1.7	2.0	1.6	1.4								1.7	1.6	1.4	
No. of Part line	2	2	2	1	1	1	1	1	1	1	2	2	2	1	1	1	1	1	1	1	1

(Note)

- All rated loads are based on the machine being operated on the firm, level, uniformly supporting surface ground, at any point of 360° around the machine within 75% of tipping load and applied load 1.25P+0.1F.
- The working radius refers to the horizontal distance from the center of swinging to the hook axis.
- The actual lifting load is obtained by subtracting the mass of all lifting equipment such as the main hook, aux. hook, etc. from the values given in this table.
 

250t Hook...3.5t	135t Hook...2.9t	90t Hook...1.6t	35t Hook...1.1t
200t Hook...3.0t	125t Hook...2.4t	60t Hook...1.4t	13.5t Hook...0.6t



# LUFFING TOWER CRANE

## Dimensions/Specifications

(unit : mm)



### ■CCH2500 Main Specifications

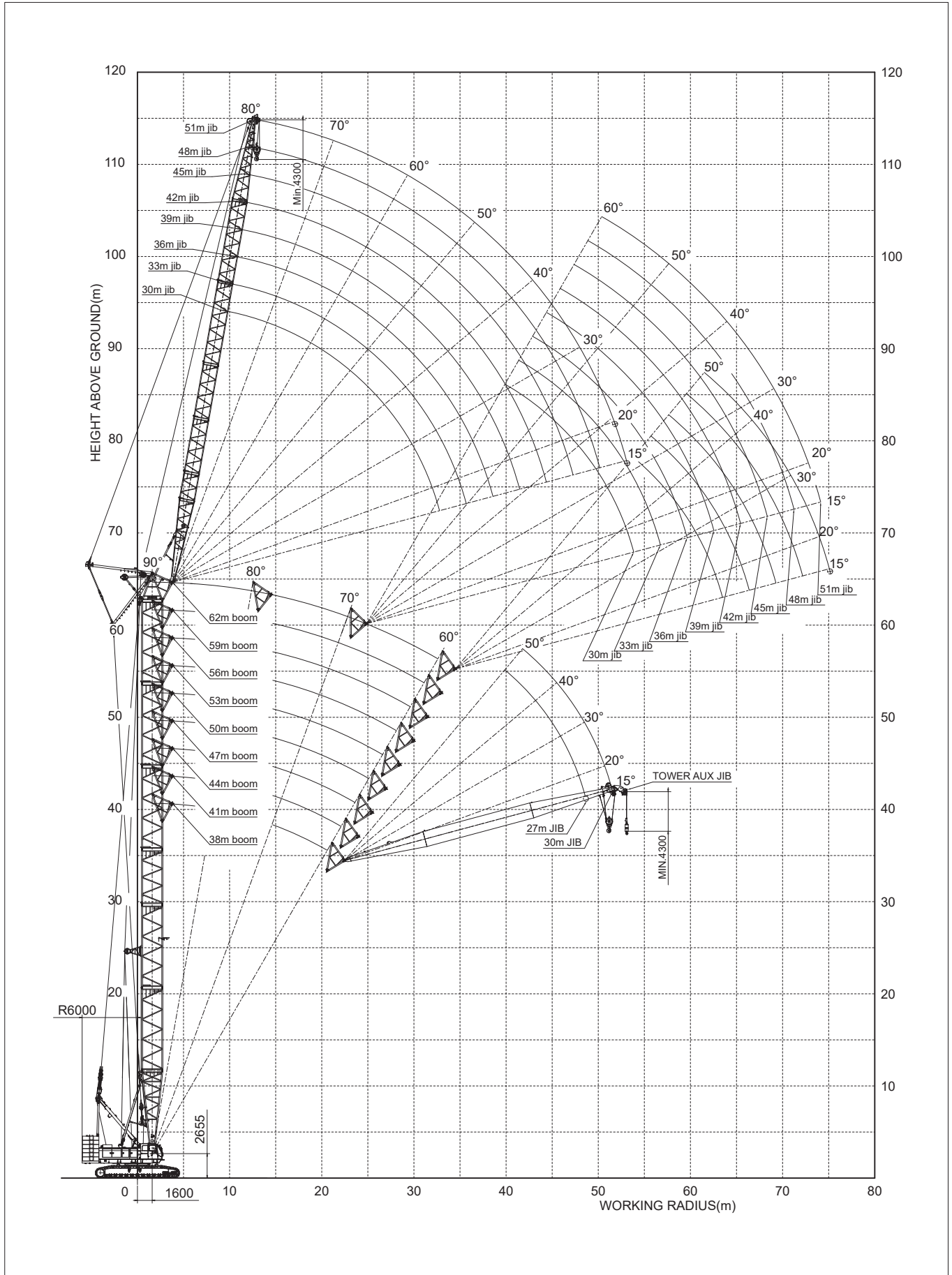
Performance		
Slewing speed	1.5min <sup>-1</sup>	
Travel speed	※ 0.9/0.6 km/hr	
Gradeability	30% (16.7°)	
Engine	Model	Cummins QSL9-3A (U.S.EPA Tier3,CARB Tier3,EU Stare III A)
	Rated output	242kW/2000min <sup>-1</sup>
	Total displacement	8.9 L
	Fuel tank capacity	510 L
	Battery	12V × 2pcs.

### ■Crane Specifications

Performance		
Maximum lifting capacity×working radius	35.0t×10.0m	
Max. boom and jib length	113m (62.0m Tower Boom + 51.0m Jib)	
Rope speed	hoisting/lowering	※ 120m/min
	Boom hoisting/lowering	※ 34m/min × 2
	Jib hoisting/lowering	※ 75 m/min
Rope part lines	35t hook	3 part lines
	13.5t hook	1 part line
	Boom hoist	20 part lines
	Jib hoist	10 part lines
Standard counterweight	92.0 t	
Carbody weight	19.0 t	
Crane total weight	Approx. 236t (62.0m boom and 51.0m jib)	
Average ground bearing pressure	126 kPa (1.28 kgf/cm <sup>2</sup> )	

※The value marked with “※” will be changed according to the loads given

# Working Ranges Diagram



# LUFFING TOWER CRANE

## Tower Boom and Jib combination

### Tower Boom and Jib combination

Tower Boom length (m)	Tower Jib length (m)								
	27.0	30.0	33.0	36.0	39.0	42.0	45.0	48.0	51.0
38.0	◎*1*2	◎*2							
41.0	◎*1*2	◎*2	◎*2						
44.0	◎*1*2	◎*2	◎*2	◎*2					
47.0	◎*1*2	◎*2	◎*2	◎*2	◎*2				
50.0		◎*1	◎	◎	◎	◎			
53.0		◎*1	◎	◎	◎	◎	◎		
56.0		◎*1	◎	◎	◎	◎	◎	◎	
59.0		◎*1	◎	◎	◎	◎	◎	◎	○
62.0		◎*1	◎	◎	◎	◎	◎	◎	○

◎ : Tower Boom angle 90° ~60°

○ : Tower Boom angle 90° ~70°

\*1 : Use of 1 part of line is no allowed.

\*2 : 35ton hook can be used with 3 parts of line.

When the tower boom is 62m, the TW-Aux jib cannot be mounted to the tower jib.

### Wire Rope

Purpose	Rope dia (mm)	Breaking Strength(kN)	Rope Type	Rope Length (m)
Load hoisting	φ28	688	P·S (19) +39×P·7	410
Aux. jib load hoisting	φ28	688	P·S (19) +39×P·7	290
Tower Boom hoisting	φ22.4	356	IWRC 6×WS (31)	370
Tower Jib hoisting	φ22.4	356	IWRC 6×WS (31)	200
Boom suspension	φ36	1150	IWRC 6×P·WS (36)	—
Jib boom suspension	φ36	1150	IWRC 6×P·WS (36)	—
Jib strut suspension	φ36	1150	IWRC 6×P·WS (36)	—

### Attachment Arrangement

As for the case with two kinds of mentions, the combination of the upper section is recommended boom constitution.

### Tower Boom Arrangement

Tower Boom length (m)	Tower boom arrangement
38.0	
41.0	
44.0	
47.0	
50.0	
53.0	

9R : 9m insert boom with rall

9S : 9m insert boom with guide sheave



## Attachment Arrangement

As for the case with two kinds of mentions, the combination of the upper section is recommended boom constitution.

### ■ Tower Boom Arrangement

Tower Boom length (m)	Tower boom arrangement
56.0	
59.0	
62.0	

9R : 9m insert boom with rull

9S : 9m insert boom with guide sheave

### ■ Tower Jib Arrangement

Tower Jib length (m)	Tower jib arrangement
27.0	
30.0	
33.0	
36.0	
39.0	
42.0	
45.0	
48.0	
51.0	

※○mark : Normal guide-roller position ☆mark : Additional guide-roller position

# LUFFING TOWER CRANE

## Tower Crane Rated Lifting Loads

### TOWER JIB RATED LIFTING LOADS (92t Counterweight + 19t Carbody weight)

(unit : t)

Boom length (m) Jib length (m) Tower boom angle Working radius (m)	38.0								27.0				30.0				41.0			
	27.0				30.0				27.0				30.0				33.0			
	90°	80°	70°	60°	90°	80°	70°	60°	90°	80°	70°	60°	90°	80°	70°	60°	90°	80°	70°	60°
8.0	8.7m×35.0								8.7m×35.0											
9.0	35.0				9.2m×35.0				35.0				9.2m×32.2				9.8m×31.0			
10.0	35.0				35.0				35.0				32.2				31.0			
12.0	32.8				31.6				32.6				30.3				29.4			
14.0	30.8				29.2				30.1				28.4				27.8			
16.0	28.8				27.0				27.7				26.5				26.2			
18.0	26.7	19.7m×25.3			25.3				25.9				25.0				24.8			
20.0	24.7	25.0			23.9	20.8m×23.4			24.4	20.3m×24.2			23.9	21.3m×23.2			23.5			
22.0	23.3	23.3			22.8	22.8			23.3	23.4			22.8	22.8			22.4	22.3m×22.2		
24.0	21.1	21.4			21.2	21.5			21.1	21.4			21.2	21.5			21.1	21.2		
26.0	19.0	19.5			18.9	20.4			19.3	19.9			19.2	20.4			18.8	19.8		
28.0	16.8	18.0			17.2	19.2			16.8	18.3			17.6	19.2			17.0	18.4		
30.0	29.6m×13.8	16.7	30.2m×16.6		15.9	17.8	31.7m×16.7		29.6m×13.8	16.8	31.2m×16.0		16.3	17.8			15.7	17.1		
32.0		15.6	15.6		13.5	16.5	16.5			15.3	15.5		13.5	16.5	32.7m×16.0		14.5	15.9		
34.0		14.4	14.5		15.1	15.2				14.1	14.2		32.5m×12.7	15.1	15.2		13.2	14.6	34.2m×16.3	
36.0		13.5	13.5		★33.1m×11.8	14.0	14.0			13.0	13.1		★33.1m×11.8	14.0	14.0		35.4m×11.0	13.6	13.3	
38.0	36.2m×13.4	12.6	39.8m×11.7		12.9	13.0			36.7m×12.7	12.3			12.9	13.0			★36.0m×10.0	12.5	12.2	
40.0		11.7	11.6		39.0m×12.8	12.1	41.8m×11.0			11.6	41.3m×11.2		39.6m×11.8	12.1			11.6	11.4		
42.0		11.1	11.0		★39.7m×12.1	11.2	10.9			11.0	11.0		★40.2m×11.8	11.0			10.9	10.8		
44.0		42.5m×10.9	10.4			10.5	10.4			43.5m×10.6	10.3		10.2	10.2			42.5m×10.8	10.2	10.2	45.2m×9.9
46.0			9.8			45.3m×10.1	9.8			9.7			9.7	9.6			★43.1m×10.5	9.6	9.6	
48.0			9.3			★45.0m×9.9	9.3			9.3			46.4m×9.6	9.1				9.1	9.1	
50.0			48.3m×9.2				8.8			8.8			★47.0m×9.4	8.6			49.3m×8.9	8.6	8.6	
52.0							51.2m×8.5							8.1				★49.9m×8.7	8.1	
54.0							★51.8m×8.2										52.7m×8.0		7.7	
56.0																	★53.3m×7.7			
58.0																				55.6m×7.4
																				★56.2m×7.2

(Note)

- All rated loads are based on the machine being operated on the firm, level, uniformly supporting surface ground, at any point of 360° around the machine within 75% of tipping load and applied load 1.25P+0.1F.
- The figure enclosed within bold lines in this table are the values determined based on the strength of the boom, etc.
- The working radius refers to the horizontal distance from the center of swinging to the hook axis.
- For the operation, be sure to raise the A-frame.
- In the case of the 27m tower jib or the 30m tower jib with a tower boom of 50m~62m, the lifting work can not be done with 1 part of line.
- When the tower boom is 62m, the TW-aux. jib can not be mounted to the tower jib.
- The angle formed by the center line of post and tower jib (offset angle) should not be always below 10 degrees.
- The angle formed by the center line of tower jib and the horizontal should not be below 15 degrees in case of lifting work.
- The actual lifting load is obtained by subtracting the mass of all lifting equipment such as the main hook, aux. hook, etc. from the values given in this table.  
35t Hook...1.1t    13.5t Hook...0.6t
- When the TW-aux. jib is mounted, the rated load with tower jib is obtained by subtracting 1.0t (including the mass of the aux. hook) from the values given in this table.
- The rated load of the TW-aux. jib is obtained by subtracting 0.5t from the values given in this table corresponding to the length of the mounted tower jib. But the max. Rated load is 13.5t.
- The rated load are limited according to the wire rope part line as shown below:  
1 part of line ... up to 13.5t    5 part of line ... up to 25.0t    3 parts of line ... up to 35.0t
- The working radius marked with an asterisk (★) in this table indicates the maximum working radius when the wire rope part line is 1 part of line.

# Tower Crane Rated Lifting Loads

## ■ TOWER JIB RATED LIFTING LOADS (92t Counterweight + 19t Carbody weight)

(unit : t)

Boom length (m)		44.0															
Jib length (m)		27.0				30.0				33.0				36.0			
Tower boom angle		90°	80°	70°	60°	90°	80°	70°	60°	90°	80°	70°	60°	90°	80°	70°	60°
Working radius (m)		90°	80°	70°	60°	90°	80°	70°	60°	90°	80°	70°	60°	90°	80°	70°	60°
8.0	8.7m × 30.0																
9.0	30.0					9.2m × 30.0				9.8m × 30.0							
10.0	30.0					30.0				29.9						10.3m × 28.5	
12.0	28.8					28.7				28.6						27.4	
14.0	27.6					27.5				27.3						26.2	
16.0	26.4					26.2				26.0						25.0	
18.0	25.3					24.9				24.7						24.1	
20.0	24.3	20.8m × 23.9				23.9	21.8m × 22.9			23.4						22.7	
22.0	23.3	23.4				22.8	22.8			22.4	22.8m × 21.9				21.4	23.9m × 20.2	
24.0	21.1	21.4				21.5	21.5			21.1	21.1				20.1	20.2	
26.0	19.3	19.9				19.8	20.4			19.0	19.8				18.9	19.0	
28.0	16.8	18.4				18.2	19.2			17.4	18.4				16.9	18.0	
30.0	29.6m × 18.8	17.0				16.6	17.8			16.0	17.2				15.4	16.9	
32.0		15.5	32.3m × 15.3			13.5	16.5	33.8m × 15.3		14.8	16.0				14.2	15.8	
34.0		14.2	14.2			32.5m × 12.7	15.1	15.2		13.2	14.8	35.3m × 13.7			13.1	14.6	
36.0		13.1	13.1			★33.1m × 11.8	14.0	14.0		35.4m × 11.0	13.7	13.3			12.1	13.7	36.8m × 12.9
38.0		37.2m × 12.6	12.3				12.9	13.0		★36.0m × 10.0	12.6	12.2			10.6	12.6	12.2
40.0			11.6				12.0	12.1			11.7	11.4			38.3m × 10.3	11.7	11.4
42.0			11.0	42.8m × 10.7			40.1m × 11.9	11.0			11.0	10.8			★38.9m × 9.6	11.0	10.7
44.0			10.4	10.3			★40.7m × 11.6	10.2	44.8m × 10.0		43.0m × 10.7	10.2			10.3	10.2	
46.0			9.7					9.7	9.6		★43.6m × 10.5	9.7	46.7m × 9.4		45.9m × 9.9	9.6	
48.0			9.3					9.1	9.1		9.2	9.1			★46.5m × 9.5	9.0	48.6m × 9.5
50.0			8.8					★48.1m × 9.1	8.6		8.7	8.5				8.6	8.3
52.0			8.5						8.1			8.0				8.2	8.0
54.0				51.3m × 8.5								★50.9m × 8.4			8.0		7.5
56.0												7.6				53.2m × 7.9	7.5
58.0												7.2				★53.8m × 7.7	7.1
60.0												57.1m × 7.0					6.8
62.0												★57.7m × 6.8					60.0m × 6.4
																	★60.6m × 6.2

(unit : t)

Boom length (m)		47.0																			
Jib length (m)		27.0				30.0				33.0				36.0				39.0			
Tower boom angle		90°	80°	70°	60°	90°	80°	70°	60°	90°	80°	70°	60°	90°	80°	70°	60°	90°	80°	70°	60°
Working radius (m)		90°	80°	70°	60°	90°	80°	70°	60°	90°	80°	70°	60°	90°	80°	70°	60°	90°	80°	70°	60°
8.0	8.7m × 30.0																				
9.0	30.0					9.2m × 30.0				9.8m × 29.5											
10.0	29.7					29.5				29.4						10.3m × 28.5					10.8m × 25.0
12.0	28.6					28.3				28.2						27.4					25.0
14.0	27.4					27.2				27.0						26.2					24.0
16.0	26.2					26.0				25.8						25.0					22.9
18.0	25.0					24.8				24.6						23.8					21.9
20.0	24.3	21.3m × 23.8				23.9				23.4						22.5					20.9
22.0	23.3	23.4				22.8	22.3m × 22.6			22.4	23.4m × 21.5				21.4						20.2
24.0	21.2	21.4				21.5	21.5			21.2	21.2				20.1	24.4m × 19.9					19.4
26.0	19.3	19.9				19.8	20.4			19.2	19.8				18.9	19.0					18.5
28.0	16.8	18.4				18.2	19.2			17.5	18.4				16.9	18.0					17.1
30.0	29.6m × 18.8	17.0				16.6	17.8			16.1	17.2				15.4	16.9					15.5
32.0		15.5	33.3m × 14.5			13.5	16.5			14.9	16.1				14.2	15.9					14.2
34.0		14.4	14.2			32.5m × 12.7	15.1	14.7		13.2	14.9				13.1	14.7					13.0
36.0		13.4	13.1			★33.1m × 11.8	14.0	14.0		35.4m × 11.0	13.8	36.3m × 13.1			12.1	13.8	37.8m × 12.3				11.9
38.0		37.7m × 12.6	12.3				12.9	13.0		★36.0m × 10.0	12.6	12.2			10.6	12.6	12.2				10.9
40.0			11.6				12.0	12.1			11.7	11.4			38.3m × 10.3	11.7	11.4				10.1
42.0			11.0				40.6m × 11.7	11.0			11.0	10.8			★38.9m × 9.6	11.0	10.7				41.2m × 8.8
44.0			10.4	44.3m × 10.0			★41.3m × 11.4	10.2		43.5m × 10.6	10.2	10.2			10.3	10.2					★41.8m × 7.9
46.0			9.6	45.6m × 10.0				9.7	46.3m × 9.6		★44.2m × 10.3	9.7			9.7	9.6					★41.8m × 7.9
48.0			9.2					9.2	9.1		9.2	48.2m × 9.0			46.4m × 9.6	9.0					8.5
50.0			8.7					8.6	8.6		8.7	8.5			★47.1m × 9.3	8.6	50.1m × 8.1				49.3m × 8.2
52.0			8.2					★49.1m × 8.8	8.1		51.3m × 8.4	8.0			8.2	7.9					★50.0m × 7.9
54.0				52.8m × 8.0				7.7	7.7		★52.0m × 8.2	7.6			7.8	7.4					7.7
56.0								55.7m × 7.4	7.4			7.2			54.2m × 7.7	7.0					7.3
58.0								★56.3m × 7.1	7.1			6.8			★54.9m × 7.5	6.7					57.1m × 7.1
60.0												58.6m × 6.7				6.4					★57.8m × 6.9
62.0												★59.2m × 6.5					61.5m × 6.2				6.3
64.0																	★62.1m × 6.0				6.0
66.0																					64.4m × 5.6
68.0																					★65.0m × 5.4

# LUFFING TOWER CRANE

## Tower Crane Rated Lifting Loads

### TOWER JIB RATED LIFTING LOADS (92t Counterweight + 19t Carbody weight)

(unit : t)

Boom length (m)	50.0																				
	30.0				33.0				36.0				39.0				42.0				
Jib length (m)	Tower boom angle																				
Working radius (m)	90°	80°	70°	60°	90°	80°	70°	60°	90°	80°	70°	60°	90°	80°	70°	60°	90°	80°	70°	60°	
9.0	9.2m x 25.0				9.8m x 25.0																
10.0	25.0				25.0				10.3m x 25.0				10.8m x 24.5								
12.0	25.0				25.0				25.0				24.0						11.3m x 23.3		
14.0	25.0				25.0				25.0				23.2						22.2		
16.0	25.0				25.0				24.8				22.4						21.4		
18.0	24.8				24.6				23.8				21.6						20.6		
20.0	23.9				23.4				22.5				20.9						19.8		
22.0	22.8	22.9m x 22.2			22.4	23.9m x 21.2			21.4				20.2						18.9		
24.0	21.5	21.5			21.2	21.2			20.1	24.9m x 19.6			19.4	25.9m x 18.5					18.1		
26.0	19.8	20.4			19.3	19.8			18.9	19.0			18.5	18.5					17.4	27.9m x 17.2	
28.0	18.2	19.2			17.6	18.4			16.9	18.0			17.1	17.2					16.5	16.8	
30.0	16.6	17.8			16.2	17.2			15.4	16.9			15.5	16.1					15.3	15.6	
32.0	13.5	16.5			15.0	16.1			14.2	15.9			14.2	15.1					14.1	14.6	
34.0	32.5m x 12.7	15.1	35.8m x 14.1		13.9	14.9			13.1	14.7			13.0	14.1					12.9	13.6	
36.0		14.0	14.0		35.4m x 12.3	37.3m x 12.3			12.1	13.8			11.9	13.2					11.9	12.8	
38.0		12.9	13.0		★36.0m x 11.3	12.6	12.2		10.6	12.6	38.8m x 11.9		10.9	12.2					11.0	11.8	
40.0		12.0	12.0			11.7	11.4		11.7	11.4	38.3m x 10.3		10.1	11.3	40.3m x 11.3				10.0	10.9	41.8m x 10.3
42.0		41.1m x 11.3	11.0			11.0	10.8		★38.9m x 9.6	11.0	10.7		41.2m x 8.8	10.4	10.6				9.2	10.0	10.3
44.0			10.2			44.0m x 10.4	10.2		10.3	10.2			★41.8m x 7.9	9.8	10.0				8.4	9.4	9.7
46.0		9.7	47.8m x 8.9			★44.7m x 10.2	9.6		9.7	9.6			9.2	9.4					44.1m x 8.3	8.8	9.1
48.0			9.2	8.9			9.1	49.7m x 8.6		46.9m x 9.4	9.0		8.5	8.9					★44.7m x 7.7	8.1	8.7
50.0			49.5m x 8.8	8.5			8.6	8.5		★47.6m x 9.2	8.5		51.6m x 7.8	8.5	8.5				7.6	8.3	
52.0				8.0			8.1	8.0			8.1	7.8		★50.5m x 7.8	8.1	8.1	53.5m x 7.4		7.2	7.9	
54.0				7.6			52.4m x 8.0	7.5		7.7	7.3			7.7	7.3				52.7m x 7.0	7.5	55.5m x 6.8
56.0				7.2			★53.0m x 7.8	7.0			6.9			7.3	7.0				★53.4m x 6.9	7.1	6.5
58.0				57.2m x 7.0				6.7			6.6			58.1m x 6.9	6.6				★54.4m x 6.9	6.7	6.3
60.0								60.1m x 6.3			6.3			★58.8m x 6.7	6.3					6.4	6.0
62.0								★60.7m x 6.1			6.0				6.0					61.0m x 6.2	5.8
64.0											63.0m x 5.9				5.7					★61.7m x 6.0	5.5
66.0											★63.6m x 5.7				65.9m x 5.4						5.2
68.0															66.5m x 5.2						5.0
70.0																					68.8m x 4.9
72.0																					★69.4m x 4.7

(unit : t)

Boom length (m)	53.0																						
	30.0				33.0				36.0				39.0				42.0				45.0		
Jib length (m)	Tower boom angle																						
Working radius (m)	90°	80°	70°	60°	90°	80°	70°	60°	90°	80°	70°	60°	90°	80°	70°	60°	90°	80°	70°	60°			
9.0	9.2m x 25.0				9.8m x 25.0																		
10.0	25.0				25.0				10.3m x 25.0				10.8m x 24.5										
12.0	25.0				25.0				25.0				24.0							11.3m x 23.3			
14.0	25.0				25.0				25.0				23.2							20.1			
16.0	25.0				25.0				24.6				22.4							19.4			
18.0	24.6				24.5				23.7				21.6							18.7			
20.0	23.9				23.4				22.5				20.9							18.0			
22.0	22.8	23.4m x 21.9			22.4				21.4				20.2							17.3			
24.0	21.5	21.5			21.2	24.4m x 20.9			20.1	25.4m x 19.3			19.4							16.6			
26.0	19.8	20.4			19.5	19.8			18.9	19.0			18.5	26.5m x 18.1						15.9			
28.0	18.2	19.2			17.7	18.4			17.2	18.0			17.1	17.2						15.3	28.9m x 15.3		
30.0	16.6	17.8			16.4	17.2			15.8	16.9			15.5	16.1						14.6	14.8		
32.0	13.5	16.5			15.1	16.1			14.5	15.9			14.2	15.1						13.9	14.1		
34.0	32.5m x 12.7	15.1			13.9	14.9			13.4	14.7			13.0	14.1						12.7	13.0		
36.0		14.0	36.8m x 13.4		35.4m x 12.3	13.8			12.4	13.8			11.9	13.2						11.7	12.2		
38.0		12.9	12.8		★36.0m x 11.3	12.6	12.0		10.6	12.6	39.8m x 11.5		10.9	12.2						10.8	11.4		
40.0		12.0	12.0			11.7	11.4		11.7	11.4	38.3m x 10.3		10.1	11.3	41.3m x 10.7					9.9	10.7		
42.0		41.1m x 11.3	11.0			11.0	10.8		★38.9m x 9.6	11.0	10.7		41.2m x 8.8	10.4	10.5				9.2	10.0	42.8m x 9.8		
44.0			10.2			10.4	10.2		10.3	10.2			★41.8m x 7.9	9.8	9.9				8.4	9.5	44.3m x 9.1		
46.0		9.7				44.8m x 10.2	9.6		9.7	9.6			9.2	9.3					44.1m x 8.3	7.6	8.6	8.6	
48.0			9.2	49.3m x 8.4		★45.2m x 10.0	9.1		47.4m x 9.3	9.0			8.5	8.8					★44.7m x 7.7	7.9	8.1		
50.0			8.7	8.3			8.6	51.2m x 8.1		48.1m x 9.0	8.5		8.0	8.4					★47.6m x 6.8	7.4	7.6		
52.0				7.9			8.1	7.9		8.1	53.1m x 7.3		7.1	7.1						7.0	7.2		
54.0				7.5			53.4m x 7.7	7.4		7.7	7.1		★51.9m x 7.1	7.6	7.2					6.6	6.9		
56.0				7.1			★54.9m x 7.5	6.9		7.3	6.8			7.2	6.9				★53.9m x 6.8	6.2	6.6		
58.0				6.8				6.6		56.3m x 7.2	6.5			6.8	6.5					56.1m x 6.2	6.3	58.9m x 5.6	
60.0				58.7m x 6.6				6.2		★56.9m x 7.0	6.2			6.2	6.2					★56.8m x 6.1	6.1	5.4	
62.0								61.8m x 6.0			5.9			59.2m x 6.4	6.0	5.9				6.0	5.6	5.8	5.2
64.0								★62.2m x 5.5			5.7			5.6						★62.7m x 5.8	5.0	5.0	
66.0											64.5m x 5.8			5.3						62.1m x 5.8	5.0	4.8	4.8
68.0											★65.1m x 5.4				67.4m x 5.1					4.8		★65.6m x 5.3	4.5
70.0														★69.0m x 4.9						4.6			4.3
72.0																					70.3m x 4.5		4.1
74.0																					★70.8m x 4.3		★73.2m x 4.0
76.0																							★73.8m x 3.9

# Tower Crane Rated Lifting Loads

## ■ TOWER JIB RATED LIFTING LOADS (92t Counterweight + 19t Carbody weight) (unit : t)

Boom length (m)		56.0															
Jib length (m)		30.0				33.0				36.0				39.0			
Tower boom angle		90°	80°	70°	60°	90°	80°	70°	60°	90°	80°	70°	60°	90°	80°	70°	60°
Working radius (m)																	
9.0	9.2m × 25.0					9.8m × 25.0											
10.0	25.0					25.0				10.3m × 25.0							10.8m × 24.5
12.0	25.0					25.0				25.0							24.0
14.0	25.0					25.0				25.0							23.2
16.0	25.0					25.0				24.5							22.4
18.0	24.5					24.5				23.6							21.6
20.0	23.8					23.4				22.4							20.9
22.0	22.8	23.9m × 41.8				22.4				21.3							20.2
24.0	21.5	21.5				21.2	24.9m × 20.6			20.1							19.4
26.0	19.8	20.4				19.5	19.8			18.9	26.0m × 19.9						18.5
28.0	18.2	19.2				17.8	18.4			17.5	18.0						17.1
30.0	16.6	17.8				16.5	17.2			16.2	16.9						15.5
32.0	13.5	16.5				15.2	16.1			14.9	15.9						14.2
34.0	32.5m × 12.7	15.1				13.9	14.9			13.8	14.7						13.0
36.0	14.0	37.9m × 12.5				35.4m × 12.3	13.8			12.7	13.8						11.9
38.0	12.9	12.5				★35.9m × 11.3	12.6	39.4m × 11.5		10.6	12.6						10.9
40.0	12.0	11.7				11.7	11.3			38.3m × 10.3	11.7	40.9m × 11.1					10.1
42.0	11.1	11.0				11.0	10.8			★38.9m × 9.6	11.0	10.8					41.2m × 9.9
44.0	42.2m × 11.1	10.2				10.4	10.2			10.3	10.2						★41.8m × 7.9
46.0		9.7					9.6				9.7	9.6					9.2
48.0		9.2					★45.7m × 9.9				48.0m × 9.1	9.0					8.5
50.0		8.7				50.9m × 7.9					★48.6m × 8.8	8.5					8.0
52.0						51.5m × 8.2	7.7			52.7m × 7.7		8.1					50.9m × 7.8
54.0						7.4				7.6	7.3						★51.5m × 7.6
56.0						7.0				54.4m × 7.5	6.8						7.2
58.0						6.7				★55.1m × 7.4	6.5						56.9m × 6.7
60.0						6.3					6.1						6.5
62.0						60.2m × 6.2					5.8						60.2m × 6.4
64.0											63.1m × 5.7						★60.8m × 6.2
66.0											★63.7m × 5.5						5.5
68.0																	66.0m × 5.2
70.0																	★66.6m × 5.0
72.0																	68.9m × 4.8
																	★69.9m × 4.6

Boom length (m)		56.0											
Jib length (m)		42.0				45.0				48.0			
Tower boom angle		90°	80°	70°	60°	90°	80°	70°	60°	90°	80°	70°	60°
Working radius (m)													
10.0	11.3m × 23.3												
12.0	23.0					11.9m × 20.8				12.4m × 18.4			
14.0	22.2					20.1				17.9			
16.0	21.4					19.4				17.3			
18.0	20.6					18.7				16.7			
20.0	19.8					18.0				16.0			
22.0	18.9					17.3				15.4			
24.0	18.1					16.6				14.8			
26.0	17.3					15.9				14.2			
28.0	16.5	28.0m × 16.9				15.3	29.0m × 15.2			13.5			
30.0	15.3	15.5				14.6	14.8			12.9	30.1m × 13.2		
32.0	14.1	14.5				13.9	14.1			12.2	12.8		
34.0	12.9	13.6				12.7	13.0			11.7	12.3		
36.0	11.9	12.8				11.7	12.2			11.1	11.4		
38.0	11.0	11.8				10.8	11.4			10.2	10.7		
40.0	10.0	10.9				9.9	10.7			9.6	10.1		
42.0	9.2	10.0				9.1	9.8			8.8	9.4		
44.0	8.4	9.4	43.9m × 9.4			8.4	9.2	45.4m × 8.8		8.2	8.8		
46.0	44.1m × 8.3	8.8	8.9			7.6	8.6	8.6		7.6	8.2	46.9m × 8.0	
48.0	★44.7m × 7.7	8.1	8.5			47.0m × 7.1	7.9	8.1		7.0	7.5	7.7	
50.0		7.6	8.1			★47.6m × 6.8	7.4	7.6		49.9m × 6.1	7.0	7.3	
52.0		7.2	7.7				7.0	7.2		★50.5m × 5.9	6.6	6.9	
54.0		53.8m × 6.9	7.3				6.6	6.9			6.2	6.6	
56.0		★54.4m × 6.7	6.9				6.2	6.6			5.8	6.3	
58.0			6.5	58.5m × 6.0			56.7m × 6.1	6.3			5.5	6.0	
60.0			6.3	5.8			★57.3m × 6.0	6.1	60.4m × 5.4		59.8m × 5.8	5.8	
62.0			6.0	5.6				5.8	5.2		★60.2m × 5.2	5.5	62.3m × 5.1
64.0			63.1m × 5.8	5.3				5.5	5.0			5.2	4.9
66.0			★63.7m × 5.6	5.0				66.0m × 5.3	4.8			5.0	4.7
68.0				4.8				★66.6m × 5.2	4.5			4.8	4.4
70.0				4.6					4.3			68.9m × 4.1	4.2
72.0				71.8m × 4.3					4.1			★69.5m × 4.6	4.0
74.0				★72.4m × 4.2					3.9				3.7
76.0									74.7m × 3.8				3.5
78.0									★75.3m × 3.7				77.8m × 3.4
80.0													★78.2m × 3.3

# LUFFING TOWER CRANE

## Tower Crane Rated Lifting Load

### TOWER JIB RATED LIFTING LOADS (92t Counterweight + 19t Carbody weight)

(unit : t)

Boom length (m)		59.0															
Jib length (m)		30.0				33.0				36.0				39.0			
Tower boom angle		90°	80°	70°	60°	90°	80°	70°	60°	90°	80°	70°	60°	90°	80°	70°	60°
Working radius (m)																	
9.0	9.2m×25.0					9.8m×25.0											
10.0	25.0					25.0				10.3m×25.0				10.8m×24.5			
12.0	25.0					25.0				25.0				24.0			
14.0	25.0					25.0				25.0				23.2			
16.0	25.0					25.0				24.3				22.4			
18.0	24.5					24.3				23.4				21.6			
20.0	23.8					23.3				22.3				20.9			
22.0	22.8					22.3				21.3				20.2			
24.0	21.5					21.2	25.4m×20.2			20.1				19.4			
26.0	19.8	24.4m×21.3				19.5	19.6			18.9	26.5m×18.9			18.5	27.5m×17.5		
28.0	18.2	19.2				17.8	18.4			17.5	18.0			17.1	17.2		
30.0	16.6	17.8				16.6	17.2			16.2	16.9			15.5	16.1		
32.0	13.5	16.5				15.3	16.1			14.9	15.9			14.2	15.1		
34.0	32.5m×12.2	15.1				13.9	14.9			13.8	14.7			13.0	14.1		
36.0		14.0				35.4m×12.3	13.8			12.7	13.8			11.9	13.2		
38.0		12.9	38.9m×12.0			★36.0m×11.3	12.6			10.6	12.6			10.9	12.2		
40.0		12.0	11.7			11.7	40.4m×11.1			11.7	11.7			10.1	11.3		
42.0		11.1	11.0			11.0	10.7			★38.9m×9.6	11.0	41.9m×10.7		41.2m×9.8	10.4	43.4m×10.0	
44.0		42.7m×10.9	10.2			10.4	10.2			10.3	10.2			★41.8m×7.9	9.8	9.8	
46.0			9.7			45.6m×10.0	9.6			9.7	9.6			9.2	9.2		
48.0			9.2			★46.2m×9.7	9.1			9.2	9.0			8.5	8.7		
50.0			8.7				8.6			48.5m×9.0	8.5			8.0	8.3		
52.0			8.1	52.3m×7.5			8.1			★49.1m×8.8	8.1			51.4m×7.7	7.9		
54.0			7.2	52.5m×8.0			7.6	54.2m×7.7			7.7			★52.0m×7.5	7.5		
56.0			6.8				55.4m×7.2	6.7			7.3	56.1m×6.5			7.1		
58.0			6.5				★56.1m×7.0	6.4			6.8	6.2			6.7	58.0m×6.2	
60.0			6.2					6.0				58.3m×6.8			6.4	5.9	
62.0				61.7m×5.9				5.7			★59.0m×6.5	5.6			61.2m×6.2	5.6	
64.0								5.5				5.4			★61.9m×6.0	5.3	
66.0								64.6m×5.4				5.1				5.0	
68.0								★65.2m×5.2				67.5m×5.0				4.7	
70.0												★68.1m×4.8				4.5	
72.0																70.4m×4.4	
74.0																★71.0m×4.3	

(unit : t)

Boom length (m)		59.0														
Jib length (m)		42.0				45.0				48.0				51.0		
Tower boom angle		90°	80°	70°	60°	90°	80°	70°	60°	90°	80°	70°	60°	90°	80°	70°
Working radius (m)																
10.0	11.3m×23.3															
12.0	23.0					11.9m×20.8				12.4m×17.7				12.9m×17.1		
14.0	22.2					20.1				17.2				16.8		
16.0	21.4					19.4				16.7				16.3		
18.0	20.6					18.7				16.1				15.8		
20.0	19.8					18.0				15.5				15.2		
22.0	18.9					17.3				15.0				14.7		
24.0	18.1					16.6				14.4				14.2		
26.0	17.3					15.9				13.8				13.6		
28.0	16.5	28.5m×16.4				15.3	29.6m×14.9			13.3				13.1		
30.0	15.3	15.5				14.6	14.8			12.7	30.6m×12.8			12.6		
32.0	14.1	14.5				13.9	14.1			12.2	12.3			12.1	31.6m×12.2	
34.0	12.9	13.6				12.7	13.0			11.7	11.8			11.0	11.6	
36.0	11.9	12.8				11.7	12.2			11.1	11.4			10.1	11.2	
38.0	11.0	11.8				10.8	11.4			10.2	10.7			9.5	10.5	
40.0	10.0	10.9				9.9	10.7			9.6	10.1			8.8	9.9	
42.0	9.2	10.0				9.1	9.8			8.8	9.4			8.2	9.2	
44.0	8.4	9.4	44.9m×9.2			8.4	9.2			8.2	8.8			7.7	8.6	
46.0	44.1m×8.3	8.8	8.9			7.6	8.6	46.4m×8.5		7.6	8.2			7.2	8.0	
48.0	★44.7m×7.7	8.1	8.5			47.0m×7.1	8.0	8.1		7.0	7.5	47.9m×7.3		6.6	7.4	
50.0		7.6	8.1			★47.6m×6.8	7.4	7.6		49.9m×6.1	7.0	7.1		6.1	6.8	49.4m×7.0
52.0		7.2	7.7				7.0	7.2		★50.5m×5.9	6.6	6.8		5.7	6.5	6.7
54.0		6.8	7.3				6.6	6.9			6.1	6.6		52.8m×5.5	6.0	6.5
56.0		54.3m×6.7	6.9				6.2	6.6			5.8	6.3		★53.4m×5.2	5.7	6.2
58.0		★54.9m×6.6	6.5				57.2m×6.0	6.3			5.5	6.0			5.4	5.9
60.0			6.3	60.0m×5.6			★57.8m×5.8	6.1			5.2	5.8			5.1	5.7
62.0			5.9	5.3				5.8	61.9m×5.0		60.1m×5.2	5.5	63.8m×4.7		5.0	5.4
64.0			5.5	5.1				5.5	4.8		★60.7m×5.1	5.2	4.7		63.0m×4.8	5.1
66.0			64.1m×5.5	4.8				5.3	4.6			5.0	4.5		★63.6m×4.7	4.9
68.0			★64.8m×5.4	4.5				67.0m×5.2	4.3			4.8	4.3			4.8
70.0				4.3				★67.7m×5.1	4.1			4.6	4.1			4.5
72.0				4.1					3.9			69.9m×4.8	3.9			4.2
74.0				73.3m×3.9					3.7			★70.6m×4.5	3.6			72.8m×3.9
76.0				★73.9m×3.9					76.2m×3.5				3.4			★73.5m×3.5
78.0									★76.8m×3.3				3.3			
80.0													79.1m×3.2			
82.0													★79.7m×3.1			

# Tower Crane Rated Lifting Loads

## ■ TOWER JIB RATED LIFTING LOADS (92t Counterweight + 19t Carbody weight) (unit : t)

Boom length (m)		62.0															
Jib length (m)		30.0				33.0				36.0				39.0			
Tower boom angle		90°	80°	70°	60°	90°	80°	70°	60°	90°	80°	70°	60°	90°	80°	70°	60°
Working radius (m)																	
9.0	9.2m × 25.0					9.8m × 25.0											
10.0	25.0					25.0				10.3m × 25.0							10.8m × 24.4
12.0	25.0					25.0				25.0							23.9
14.0	25.0					25.0				25.0							23.1
16.0	25.0					24.8				24.3							22.3
18.0	24.3					24.0				23.4							21.5
20.0	23.6					22.9				22.3							20.8
22.0	22.8					21.8				21.3							20.1
24.0	21.5	24.9m × 21.0				20.6				20.1							19.3
26.0	19.8	20.4				19.4	26.0m × 19.5			18.9	27.0m × 18.8						18.5
28.0	18.2	19.2				17.8	18.3			17.5	18.0						17.1
30.0	16.6	17.8				16.6	17.2			16.3	16.9						15.5
32.0	13.5	16.5				15.3	16.1			15.1	15.9						14.2
34.0	32.5m × 12.7	15.1				13.9	14.9			13.9	14.7						13.0
36.0	14.0					35.4m × 12.3	13.8			12.7	13.8						11.9
38.0	12.9	39.9m × 11.7				★35.9m × 11.3	12.6			10.6	12.6						11.0
40.0	12.0	11.7				11.7	41.4m × 10.9			38.3m × 10.3	11.7						10.2
42.0	11.1	11.0				11.0	10.7			★38.9m × 9.6	11.0	42.9m × 10.4					10.4
44.0	43.2m × 10.7	10.2				10.4	10.2			10.4	10.2						★41.8m × 7.9
46.0		9.7				9.8	9.6			9.8	9.6						9.2
48.0		9.2				46.1m × 9.5	9.1			9.3	9.0						8.5
50.0		8.7				★46.8m × 8.6	8.6			49.0m × 9.0	8.5						8.0
52.0		8.2	53.8m × 7.0			8.1				★49.7m × 8.7	8.1						★51.9m × 7.6
54.0		7.0	63.6m × 7.8			7.6	65.7m × 8.3			7.7	7.7						★52.6m × 7.4
56.0		6.7				7.0	6.3			7.3	57.6m × 6.0						7.1
58.0		6.3				6.3	56.5m × 5.9			6.8	5.9						6.7
60.0		6.0				6.0	★57.1m × 6.7			5.7	59.4m × 6.5						6.4
62.0		5.7				5.7	5.5			5.5	★60.9m × 6.2						6.1
64.0			63.2m × 5.5			5.7	5.3			5.3							62.2m × 6.1
66.0						4.9	4.9			4.9							★62.9m × 5.8
68.0						4.7	66.1m × 4.9			4.7							4.5
70.0						4.7	★66.7m × 4.7			4.7							69.0m × 4.6
72.0						4.4				4.4							★69.6m × 4.4
74.0						4.0				4.0							71.9m × 4.1
						4.0				4.0							★72.5m × 4.0

(unit : t)

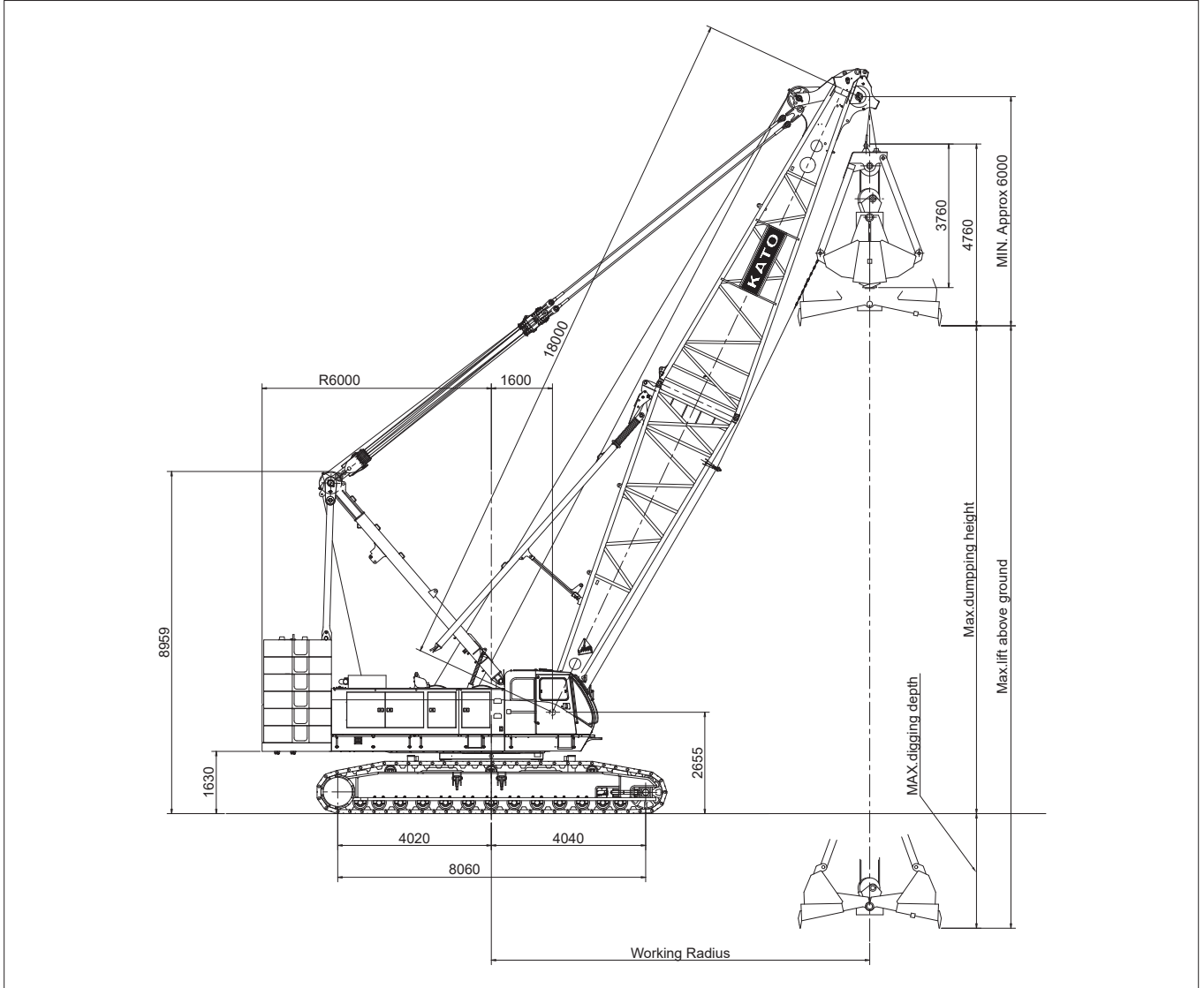
Boom length (m)		62.0														
Jib length (m)		42.0				45.0				48.0				51.0		
Tower boom angle		90°	80°	70°	60°	90°	80°	70°	60°	90°	80°	70°	60°	90°	80°	70°
Working radius (m)																
10.0	11.3m × 23.3															
12.0	23.0					11.9m × 20.8				12.4m × 17.7				12.8m × 16.9		
14.0	22.2					20.1				17.2				16.6		
16.0	21.4					19.4				16.7				16.1		
18.0	20.6					18.7				16.1				15.6		
20.0	19.8					18.0				15.5				15.0		
22.0	18.9					17.3				15.0				14.5		
24.0	18.1					16.6				14.4				14.0		
26.0	17.3					15.9				13.8				13.4		
28.0	16.5	29.0m × 11.7				15.3				13.3				12.9		
30.0	15.3	15.3				14.6	30.1m × 14.8			12.7	31.1m × 12.4			12.4		
32.0	14.1	14.5				13.7	14.1			12.2	12.2			11.9	32.1m × 11.9	
34.0	12.9	13.6				12.7	13.0			11.7	11.7			11.0	11.5	
36.0	11.9	12.8				11.7	12.2			11.0	11.3			10.1	11.0	
38.0	11.0	11.8				10.6	11.4			10.1	10.6			9.5	10.3	
40.0	10.0	10.9				9.7	10.7			9.5	10.0			8.8	9.7	
42.0	9.2	10.0				9.1	9.8			8.8	9.3			8.2	9.0	
44.0	8.4	9.4	45.9m × 9.0			8.2	9.2			8.0	8.7			7.7	8.4	
46.0	44.1m × 8.3	8.8	9.0			7.4	8.6	47.4m × 9.2		7.4	8.1			7.2	7.9	
48.0	★44.7m × 7.7	8.1	8.5			47.0m × 6.9	8.1	8.1		6.9	7.5	48.9m × 7.3		6.6	7.4	
50.0		7.6	8.1			★47.6m × 6.6	7.4	7.6		49.9m × 5.9	7.0	7.1		6.1	6.9	50.4m × 6.8
52.0		7.2	7.7			7.0	7.2			★50.6m × 5.9	6.6	6.8		5.7	6.3	6.5
54.0		6.8	7.3			6.6	6.9			6.1	6.6			52.9m × 5.5	5.8	6.3
56.0		6.8	6.9			6.2	6.6			5.8	6.3			★53.4m × 5.2	5.5	6.0
58.0	54.8m × 6.6	6.5	6.5			57.7m × 6.0	6.3			5.5	6.0			5.2	5.7	
60.0	★55.5m × 6.5	6.3	61.9m × 5.3			★58.4m × 5.8	6.1			5.2	5.8			4.9	5.5	
62.0		5.9	5.2			5.8	63.4m × 4.8			60.6m × 5.1	5.5			4.7	5.2	
64.0		5.6	5.0			5.5	4.7			★61.3m × 5.0	5.2	65.3m × 4.1		63.5m × 4.3	4.9	
66.0		65.1m × 5.4	4.7			5.3	4.5			5.0	4.0			★64.2m × 4.3	4.7	
68.0		★65.8m × 5.3	4.5			68.0m × 5.1	4.2			4.9	3.8				4.6	
70.0			4.2			★68.7m × 5.0	4.0			4.6	3.6				4.4	
72.0			3.9				3.8				70.9m × 4.5				4.2	
74.0			3.7				3.6			★71.6m × 4.3	3.2				73.8m × 3.6	
76.0			74.8m × 3.6				3.4				3.0				★74.5m × 3.3	
78.0			★75.4m × 3.5				77.7m × 3.2				2.8					
80.0							★78.3m × 3.1				2.7					
82.0											80.6m × 2.6					
84.0											★81.9m × 2.4					



# CLAMSHELL SPECIFICATION

## Dimensions/Specifications

(unit : mm)



### ■ CCH2500 Main Specifications

Performance		
Slewing speed	1.5min <sup>-1</sup>	
Travel speed	※ 0.9/0.6 km/hr	
Gradeability	30% (16.7°)	
Engine	Model	Cummins QSL9-3A (U.S.EPA Tier3,CARB Tier3,EU Stare III A)
	Rated output	242kW/2000min <sup>-1</sup>
	Total displacement	8.9 L
	Fuel tank capacity	510 L
	Battery	12V × 2pcs.

### ■ Clamshell Specifications

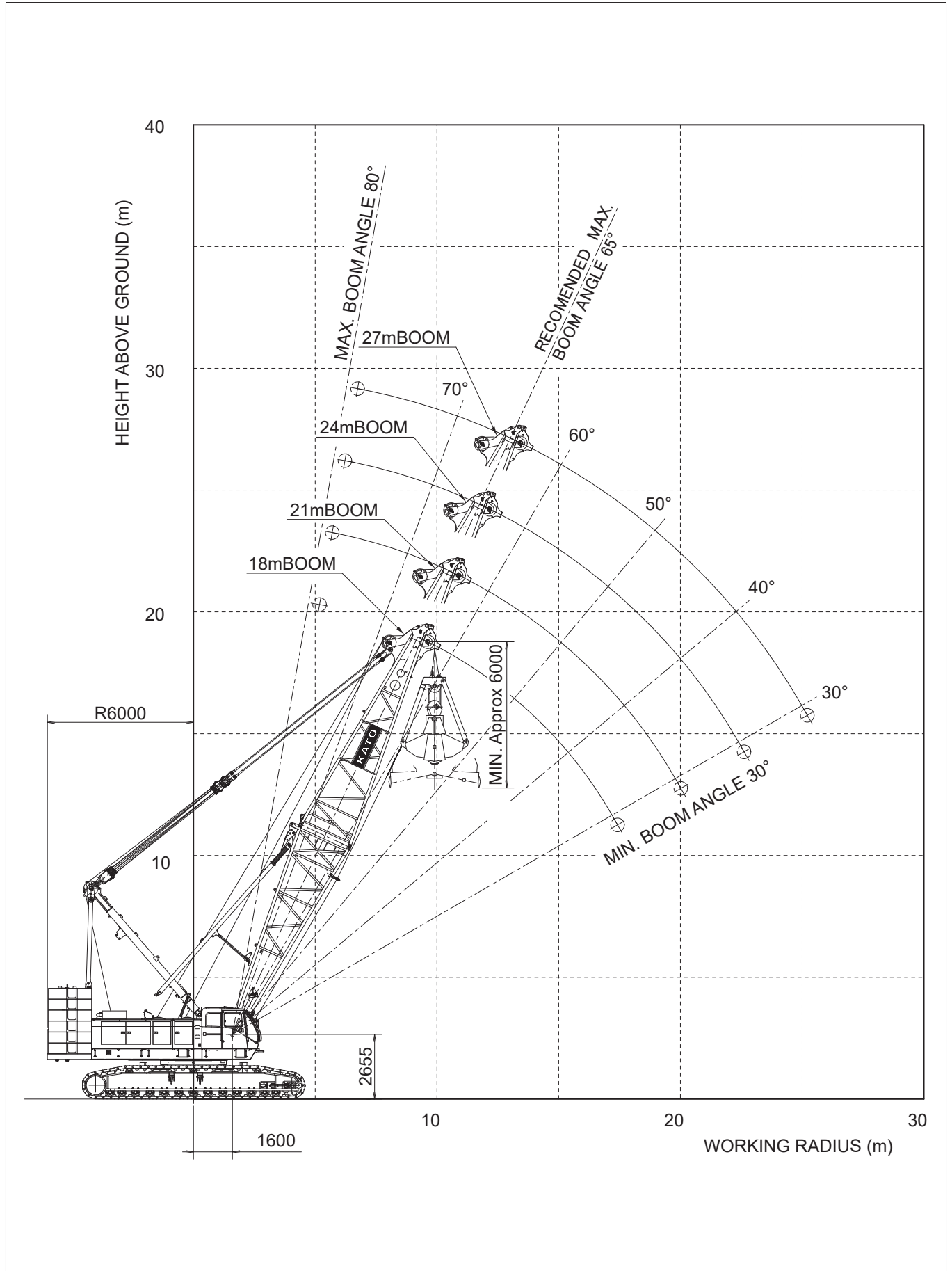
Performance		
Maximum lifting capacity	12.5 t (Bucket weight+Load)	
Boom length	18.0~27.0m	
Maximum lift above ground	46.0m (18.0m Boom + 2.5m <sup>3</sup> Bucket)	
Rope speed	Bucket closing	※ 120m/min
	Bucket holding	※ 120m/min
	Boom hoisting/lowering	※ 34m/min × 2
Rope part lines	Bucket closing	6 part lines (for all types bucket)
	Bucket holding	1 part line (for all types bucket)
	Boom hoist	20 part lines
Standard counterweight	92.0 t	
Carbody weight	19.0 t	
Crane total weight	Approx. 211t (18.0m boom+2.5m <sup>3</sup> Bucket)	
Average ground bearing pressure	113 kPa (1.15 kgf/cm <sup>2</sup> )	

※The value marked with "※" will be changed according to the loads given.





Clamshell Working Ranges Diagram



## Clamshell Bucket Specification

### Clamshell Bucket Specification

Classifications	Capacity (m <sup>3</sup> )	Weight (t)	Classifications
Heavy digging	2.0	6.5	Option
General digging	2.5	5.5	Standard
Medium duty	3.0	5.0	Option
Light duty	4.0	4.5	Option
Light duty	5.0	4.0	Option

### Wire Rope

Purpose	Rope dia (mm)	Breaking Strength(kN)	Rope Type
Bucket closing	φ 28	585	※IWRC 6×Fi (29)
Bucket suspension	φ 28	585	※IWRC 6×Fi (29)
Boom hoist	φ 22.4	357	IWRC 6×WS (31)
Boom suspension	φ 40	1360	IWRC 6×P·WS (36)
Hydraulic tugline	φ 10	54	6×19

Note:

The wire rope marked with “※” is for excavation work.

When carrying out crane work, it is necessary to use load hoisting wire rope.

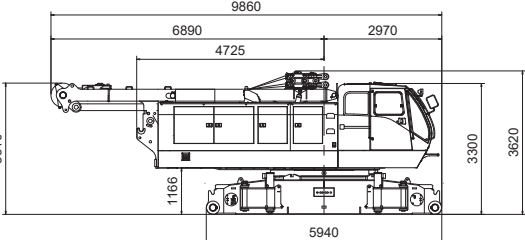
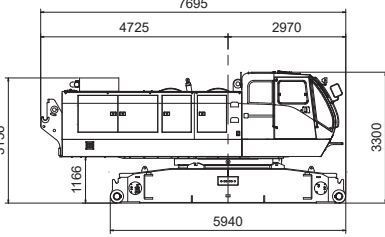
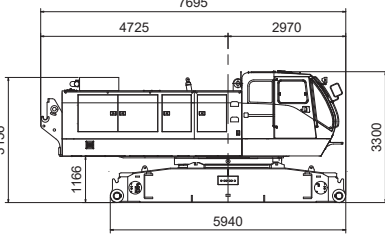
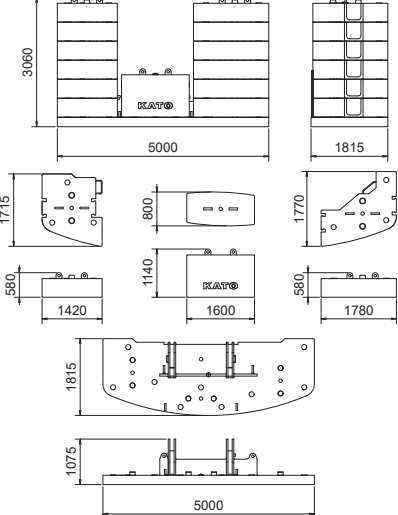
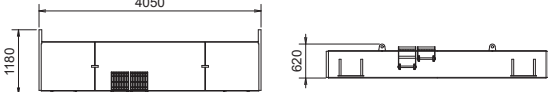
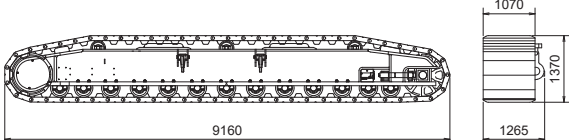
### Working Radius And Rated Loads

Boom length (m)	18.0				21.0				24.0				27.0			
	35°	45°	55°	65°	35°	45°	55°	65°	35°	45°	55°	65°	35°	45°	55°	65°
Working radius (m)	16.9	14.9	12.6	9.9	19.3	17.1	14.3	11.2	21.8	19.2	16.0	12.4	24.3	21.3	17.7	13.7
Rated lifting loads (t)	12.5	12.5	12.5	12.5	12.5	12.5	12.5	12.5	12.5	12.5	12.5	12.5	12.5	12.5	12.5	12.5
Boom point height (m)	12.6	15.1	17.1	18.8	14.3	17.2	19.6	21.5	16.0	19.3	22.1	24.2	17.8	21.4	24.5	26.9
Max. dumping height (m)	6.6	9.1	11.1	12.8	8.3	11.2	13.6	15.5	10.0	13.3	16.1	18.2	11.8	15.4	18.5	20.9
Max. digging depth (m)	39.4	36.9	34.9	33.2	37.7	34.8	32.4	30.5	36.0	32.7	29.9	27.8	34.2	30.6	27.5	25.1

Note:

- The maximum boom length is 27.0m.
- The rated lifting load indicates the maximum lifting weight of a bucket and its content. Select an appropriate bucket depending on content, so as not to exceed the rated lifting load.
- The working radius refers to the horizontal distance from the center of swinging to the vertical line through the center of the bucket.
- Maximum dumping height depends on the height of a bucket attached. In the chart, top clearance of 6m is assumed.
- Maximum digging depth is the value calculated by subtracting maximum dumping height from the maximum lifting range of 46m.
- The aux. jib cannot be used for bucket work.
- When lowering a bucket using half brake, ensure that the drop height is about 10m or less. Use powered lowering as well as free fall when the drop height is higher than 10m.
- The maximum weight of a bucket is 6.5t, but it is necessary to use a lighter bucket depending on work cycle and drop height.
- Avoid sudden acceleration or deceleration while slewing the machine, which would apply dragging the load sideway to the boom. Be careful especially when a longer boom is used.

Transport Dimensions and Weights

Name	Dimension (mm)	Q'ty	Weight (t)
1st Disassembly Base Machine with: Main/Aux. Boom Hoist Drum Main Boom Hoist Wire A-frame Equalizer Jack		1	43.0
2nd Disassembly Base Machine with: Main/Aux. Boom Hoist Drum		1	31.9
3rd Disassembly Base Machine Only		1	27.9
Counterweight Ass'y (6 stage piling) 3,060×1,815×5,000		5	Weight (L) 6.00×6 Weight (C) 8.10×1 Weight (R) 5.60×6 Weight Base 14.30×1 <hr/> Total 92.00
Carbody Weight 620×1,180×4,050		2	9.5
Crawler Ass'y 1,370×1,265×9,160		2	20.8×2
A-frame	H1095×W1825×L7240 Excluding Hoist Cylinder & Boom Hoisting Wire	1	3.72
Pedestal	□400×485	4	0.04
Jack up	H240×W1050×L1050	4	0.41

Transport Dimensions and Weights

Crane Boom				
Name	Dimension	Dimension (mm)	Q'ty	Weight (t)
Inner Boom (CR)		H2675×W2465×L9590	1	4.55
Outer Boom (CR)		H2460×W2355×L9775	1	3.41
Insert Boom (3m)		H2430×W2350×L3135	1	0.78
Insert Boom (6m)		H2430×W2350×L6135	1	1.29
Insert Boom (9m)		H2430×W2350×L9130	1	1.78
Taper Insert Boom		H2525×W2355×L6165	1	1.33
Equalizer		H465×W1140×L2360	1	1.07
Crane Jib				
Name	Dimension	Dimension (mm)	Q'ty	Weight (t)
1m Aux. Jib		H900×W730×L1650	1	0.33
Inner Jib (w/Strut, for CR Jib)		H1265×W1220×L6920	1	0.96
Outer Jib (for CR Jib)		H1065×W1055×L6865	1	0.46
Insert Jib (for CR Jib)		H1085×W1055×L6075	1	0.24
Tower Boom/Jib				
Name	Dimension	Dimension (mm)	Q'ty	Weight (t)
Tower Inner Boom		H2675×W2465×L9245	1	5.2
Tower Special Insert Boom		H2465×W2355×L9130	1	1.86
Tower Top		H2740×W2430×L3930	1	3.32
Strut		H1150×W2065×L7420	1	2.35
Middle Equalizer		H400×W785×L1450	1	0.35
Inner Jib		H1690×W2500×L9260	1	1.8
Outer Jib (Also for Crane Light Boom)		H1690×W1685×L9650	1	1.36 (Guide Sheave x 1pc) 1.40 (Guide Sheave x 2pcs)
3m Insert Jib (Also for Crane Light Boom)		H1790×W1685×L3090	1	0.31
6m Insert Jib (Also for Crane Light Boom)		H1790×W1685×L6090	1	0.51
9m Insert Jib		H1790×W1685×L9090	1	0.71

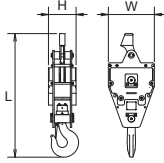
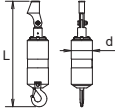
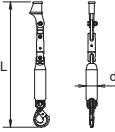
# Transport Dimensions and Weights

## Transport Dimensions and Weights

Hook (Crane & Tower)				
Name	Dimension	Dimension (mm)	Q'ty	Weight (t)
250ton Hook		H990×W770×L3560	1	3.5
200ton Hook		H940×W770×L3510	1	3.0
135ton Hook		H990×W770×L2610	1	2.9
125ton Hook		H940×W770×L2600	1	2.4
90ton Hook		H690×W740×L2245	1	1.6
60ton Hook		H620×W770×L2085	1	1.4

## ■ Transport Dimensions and Weights

### Transport Dimensions and Weights

Hook (Crane & Tower)				
Name	Dimension	Dimension (mm)	Q'ty	Weight (t)
35ton Hook		H445×W740×L1990	1	1.1
13.5ton Hook		D φ 340×L1700	1	0.6
13.5ton Swivel Hook		D φ 180×L2020	1	0.2

### Lubricating Oil List

		Volume	Standard Oil Specs
Engine (QSL9-3A)	Engine Oil	TOTAL : 27.0L	Shell RimulaX 15W-40 CH-4/CF
		H : 22.7L	
		L : 18.9	
	Coolant	TOTAL : 25.7L	(Anti-freezing 50% Concentration)
Hydraulic Oil Tank	Hydraulic Oil	TOTAL : 630L	Shell Tellus Oil 46
		Tank Level : 330L	
Reduction Gear	Gear Oil		Shell Spirax EP90 API GL-4

## ■Standard Equipment

### ■Safety Devices

- Moment Limiter :Over-load prevention device.  
Alarm at 90%,automatic stop at 100%
- Hook over-winding :Alarm and automatic stopper
- Boom over-hoisting :Automatic stopper
- Boom 2nd over-hoisting :All winch function(non resetable)
- Boom backstopper :Double-stem telescopic
- Swing lock :Pin-lock type
- Main and Auxiliary drum lock :Pawl type
- Boom hoisting drum lock :Pawl type
- Lever lock :Remote control circuit line cut off
- Automatic brake system
- Slewing warning buzzer(with voice alarm)
- Travel warning buzzer(with voice alarm)
- Engine start voice alarm · Switch of emergency stop the engine
- Hydraulic safety valves

### ■Instrument

- Tachometer(displayed by Moment Limiter)
- Hour meter
- Hydraulic pressure gauge for control circuit
- Fuel level gauge
- Engine coolant temperature gauge(indicated by OK monitor)
- Engine diagnostic monitor

### ■Auxiliary DEVICE

- Speed control for slewing
- Speed control for winch
- Pump power shift device
- Remote controller for jack and crawler connect cylinder

### ■Lighting

- Work light :24V x 80W
- Room light :24V x 10W

### ■Others

- Air conditioner
- Front windshield wiper
- Ceiling wiper
- Sun shade
- Sun visor
- Storage pouch
- Tool box
- Reclining operator's seat
- Floor mat
- Step for operator's cab(retractable type)
- Radio
- Cigarette lighter
- Rear view mirrors(on both sides)
- Warning horn
- Electric fuel pump
- "A" frame hoist cylinders
- Bronze tinted glass
- Footrest
- Electric engine throttle control grip
- Engine throttle pedal
- Loud speaker
- Foot-pin cylinders
- Crawler connect cylinder
- Rope guide roller on the boom back(for outer boom)

## ■Optional Specifications

### ■Additional Device

- 3rd hoisting winch(no free fall)
- Main/Auxiliary hoisting winch with free fall(with mode selector)
- Reeving winch combined use tagline
- Tagline
- Drum rotation indication
- Monitor TV(for rear/drum view)
- Monitor TV(for hook/load)
- Mirror for drum
- Combustion type heater
- Fire extinguisher
- Operator cabin roof guard
- Planking (case for erect the boom)

### ■Light And Instrument

- Yellow rotary light
- Airplane warning light
- Over load outside alarm light(red/yellow/green)
- Work light for drum
- Work light on boom
- Hand light
- Back light
- Level
- Anemometer

### ■Step And Guard

- Cat walk(no handrail,for rear cab)
- Handrail for cat walk
- Wire-mesh boom walkway(for inner boom)
- Wire-mesh for boom walkway(for insert boom and outer boom)
- Safety guard on cab (handrail)
- Safety guard rope on main boom (stanchion rope)

### ■Attachment

- 3m,6m,9m insert boom(with pendant rope and guide roller)
- Taper insert boom of light boom and 3m,6m insert jib(with tower)
- 13m basic jib and 6m insert jib(with pendant rope and guide roller)
- 3m,6m,9m Insert tower boom and 3m,6m,9m insert tower jib (with pendant rope and guide roller)
- 1m auxiliary jib
- 250/135t double hook block  
(five sheaves and additional sheave-block)
- 200/125t double hook block  
(five sheaves and additional sheave-block)
- 135t double hook block(six sheaves)
- 90t double hook block(four sheaves)
- 60t double hook block(three sheaves)
- 35t hook block(one sheave)
- 13.5t hook block
- 13.5t swivel hook block
- Additional boom point sheave-block (use for over 200t loads)
- Wire rope for front drum "P·S(19)+39×P·7" BS=688kN(use for 200t loads)
- Wire rope for front drum "P·S(19)+39×P·7" BS=755kN(use for 235t loads)
- Wire rope for front drum "IWRC 6×P·WS(36)" (use for over 235t loads)
- Wire rope for rear drum "P·S(19)+39×P·7"
- Lifting piece for insert booms
- Rope guide roller on the boom back

### ■Name Plate

- Name plate(both side of base machine)
- Name plate(outer boom or both side of insert boom)

### ■Other

- Large size tool box(with caster)
- Sling wire rope(for lifting machine,attachment)
- Lifting pad for crawler

\*Specifications are subject to change without notice due to improvements or modifications.

Address inquiries to:

**KATO**

**KATO WORKS CO.,LTD.**

9-37, Higashi-ohi 1-chome, Shinagawa-ku, Tokyo, 140-0011, Japan

Tel. : Head Office Tokyo +81(0)3 3458-1111  
Overseas Marketing Department. Tokyo +81(0)3 3458-1115

Fax. : Tokyo +81(0)3 3458-1152

URL <http://www.kato-works.co.jp>

**C05451**

10.2020-PDF (TI) 1