

STANDARD AND OPTIONAL EQUIPMENT

○ : Standard ● : Optional

●Safety equipment	HD25V5	HD30V5	HD35V5
ROPS canopy	○	○	○
TOPS canopy	●	●	●
Safety lock lever	○	○	○
Retractable seat-belt	○	○	○
Boom working light ※1	○	○	○
LED boom working light ※1	●	●	●
Front and Rear working light(Only cabin: Front 2, Rear 1)	●	●	●
Rear side mirror (only cabin)	●	●	●
Automatic parking brake (slewing table)	○	○	○
Automatic parking brake (traveling)	○	○	○
Caution indication	○	○	○
Reinforced hose(partial)	○	○	○
Rear side reflective plate	○	○	○
Engine fan guard	○	○	○
Secondary engine stop switch	-	○	○
Tie down point	○	○	-
Front guard(ROPS, cabin)	●	●	●
Traveling alarm	●	●	●

●Operation seat	HD25V5	HD30V5	HD35V5
12V electric supply port	○	○	○
Cup holder	○	○	○
Arm rest	○	○	○
Electric control throttle knob	○	○	○
Multiple one-key	●	●	●
Manual storage box	○	○	○
Analogue monitor	○	-	-
Analogue monitor(engine error code)	-	○	○
Seat suspension	○	○	○

●Operation room option (only cabin)	HD25V5	HD30V5	HD35V5
Heater	●	●	●
Air Conditioner	-	●	●
AM radio	●	●	●

※1 Cannot be installed at the same time ※2 Side cutter cannot be installed ※3 2nd or 2nd and 3rd aux piping cannot be selected without the 1st aux piping ※4 E grip type  
※5 Cannot be installed at the same time

SPECIFICATION AND COMBINATION OF BUCKET

● : General purpose □ : Light work × : Unusable

		HD25V5						HD30V5						HD35V5				
Bucket capacity (JIS M3) (m³)		0.04	0.05	0.06	0.07	0.08	0.09	0.04	0.05	0.06	0.07	0.08	0.09	0.10	0.055	0.08	0.11	0.12
Bucket width(mm)	without side cutter	250	320	370	420	470	520	250	320	350	400	450	500	550	350	450	550	610
	with side cutter	-	-	400	450	500	550	-	-	400	450	500	550	600	400	500	600	660
Number of bucket teeth		2	3	3	3	4	4	2	3	3	3	4	4	4	3	3	4	4
Standard arm		●	●	●	●	●	□	●	●	●	●	●	●	□	●	●	●	□
Long arm		●	●	●	×	×	×	●	●	●	●	×	×	×	●	●	×	×

SHOE

	HD25V5		HD30V5		HD35V5	
Type	Rubber	Steel	High-durability rubber(tough track)	Steel	High-durability rubber(tough track)	Steel
Shoe width(mm)	250		300		300	
Overall width(mm)	1,550		1,550		[Max./Min.]1,800/1,550	
Ground pressure(kPa)	30	32	28	29	29	30

- Before using this machine, read the instruction manual precautions thoroughly to operate it correctly.
- Specifications are subject to change without notice for improvement purposes.
- Photographs shown in the catalog were taken for publication and therefore may differ in some cases from actual objects.
- When operating the mini excavator, wear clothing and equipment in accordance to local legal and safety regulations.

● Contact for enquiry:



KATO WORKS CO.,LTD.

9-37, Higashi-ohi 1-chome, Shinagawa-ku, Tokyo, 140-0011, Japan  
Tel. : Head Office : Tokyo +81 (0)3 3458-1111  
Overseas Marketing Department : Tokyo +81 (0)3 3458-1115 / FAX: Tokyo +81 (0)3 3458-1163  
www.kato-works.co.jp



KATO

MINI EXCAVATOR

✓ FIVE  
HD25  
✓ FIVE  
HD30  
✓ FIVE  
HD35





Advanced low center of gravity design

# Powerful Strong Reliable

Ultra slewing mini excavators fit various job sites

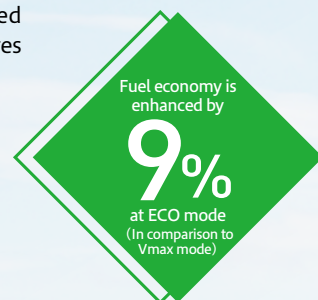
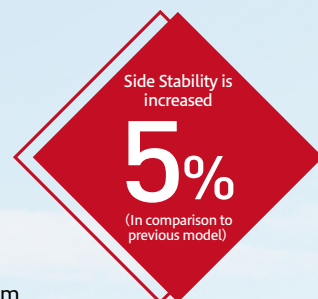
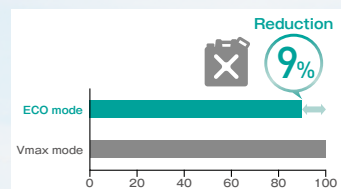
## Workability & Economy

### Enhancement of stability

Stability is enhanced in comparison to the previous model by lowering the center of gravity. The workability has been improved for efficient operation.

### Vmax mode and ECO mode

Operation mode is selectable from Vmax mode which is operation speed oriented and ECO mode which ensures low fuel consumption.



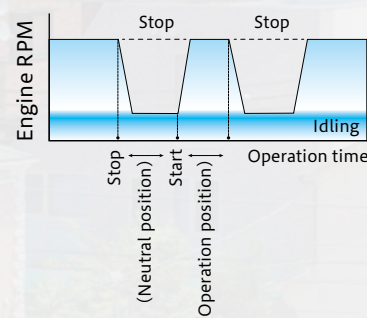
### Enhanced dumping height

Dumping height is higher than previous model (110mm higher than HD30/35V4). Workability has been improved.



### Auto-idling is standard feature

Optimum engine speed will be provided automatically in few seconds after returning the operation lever to the neutral position. It saves the fuel consumption by approx. 10%.



### Enhanced operability

The reaction at start and stop is significantly improved. The low gravity design suppresses vibration and enables for a non-stress operation.

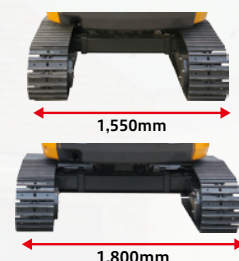
### Traveling auto shifting mode

Traveling speed 1 and 2 are automatically changed according to the traveling motor load. Can set only speed 1 by operating the switch on the dozer lever.



### Extendable undercarriage (HD35V5)

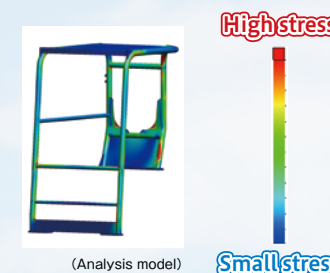
This undercarriage design is efficient for transportation and traveling in confined spaces ensuring compactness and high stability.



## Safety

### ROPS compliant 4-post canopy

4-post canopy with a retractable seat belt is available as standard feature. Safety of operator has significantly improved (Fasten your seat belt when you operate).



### Engine start system & safety lock system

The engine is turned on when that lever is in the neutral position. Auto-parking brake is activated when the lock lever is raised (Including dozer blade and swing). It offers high operating safety and prevents unexpected movements.



### Traveling & Slewing parking brake

Parking brake is equipped to prevent unexpected movement and secure safety.

### Emergency engine stop switch (HD30/35V5)

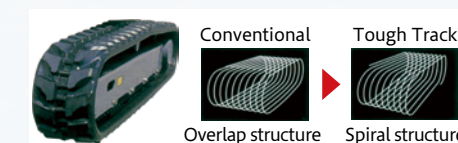
It is possible to stop the engine from outside of cabin at emergency situation.



## Durability

### High-durability Tough Track rubber shoes are equipped as Standard (HD30/35V5)

The durability is improved by spiral structure with great rug pattern and anti-corrosion steel cord.



	Conventional	Tough Track
Core metal shape		
Core metal edge FEM analysis		

### Working light under the boom

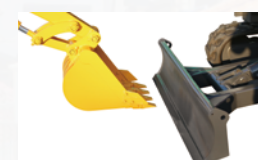
The light is installed to under the boom and protected from damages.

### Reinforced boom cylinder cover

The V-shaped double structure reinforced boom cylinder cover prevents the cylinder from damages.

### Fully versatile easy skimming work

The closer distance between bucket teeth and dozer blade allows it to skim the ground easier.



### Boom swing pin

Single large size pin reduces the wearing and the rattling sounds.

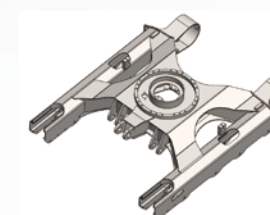


### Reinforced dozer blade

Dozer blade arm adopts sturdy square tube structure. It is strong and durable against twist.

### X-shaped under carriage (HD25/30V5)

It enhanced the strength against twist. Mud drainage performance has increased and cleaning is now carried out with ease.





# Comfortability

## Comfortable operating space

Ergonomic wide comfortable operating space has been designed to fit operator.

## Monitor

Brand new display with improved visibility of display due to the always lit LED light. Engine error code on the display supports efficient maintenance.



## Cup holder

The cup holder is installed.



## 12V electric supply port

Equipped with an electric supply port. (12V 10A)



## Comfortable lever control

Appropriate lever length and remote valve enhance lever operating comfortability. It also reduces the operators fatigue.

## Great access

Access to the operator seat has been improved by lowering the step height.



# Option

TOPS canopy



ROPS cabin



Front guard



1st aux. piping pedal



Traveling pedal



Proportional control lever



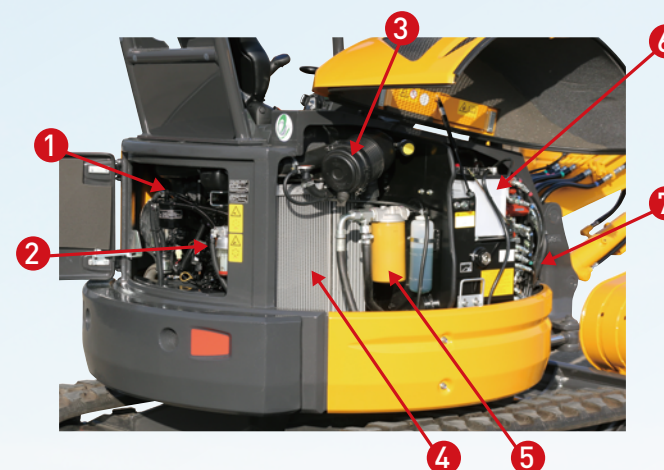
Additional counterweight



# Maintenance

## Wide openable engine cover

Engine and right-side covers are openable without using any tools. Daily maintenance such as engine check have been made easier.



- 1 Fuel filter
- 2 Water separator with electric sensor
- 3 Air cleaner (Double element)
- 4 Side by side cooling
- 5 Hydraulic oil return filter
- 6 Battery
- 7 Control valve



## Steel pressed cover

Durable steel cover is adopted and it is easier to repair damage such as scratch and dent.

Air Conditioner



Heater



Pattern change valve (AB)



Pattern change valve (ABCD)





