

# SR-800L



# SR-800L

9-37, Higashi-ohi 1-chome, Shinagawa-ku, Tokyo, 140-0011, Japan / Tel.: Head Office: Tokyo +81 (0)3 3458-1111 Overseas Marketing Department: Tokyo +81 (0)3 3458-1115 / FAX: Tokyo +81 (0)3 3458-1163

# SR-800L

## Rough Terrain Crane

Maximum lifting capacity: 80t × 1.7m

Maximum boom length: 44.5m



# KATO



Web site  
[kato-works.co.jp](http://kato-works.co.jp)



/ KATO WORKS OFFICIAL  
[youtube.com/user/katowork](https://www.youtube.com/user/katowork)



Instagram

[instagram.com/kato\\_works\\_official/](https://www.instagram.com/kato_works_official/)



- Before you operate the machine, study the instruction manual thoroughly and follow the instructions it contains.
- Some differences may arise between the machine delivered and the photographs in the catalog due to any added improvements.  
Note: The specification may be changed without notice.
- The actual colors of the body and interior may appear slightly different from those shown in this catalog due to the limitation of photography and printing.

- Contact for enquiry:

# KATO

## KATO WORKS CO.,LTD.

9-37, Higashi-ohi 1-chome, Shinagawa-ku, Tokyo, 140-0011, Japan

Tel.: Head Office: Tokyo +81 (0)3 3458-1111

Overseas Marketing Department: Tokyo +81 (0)3 3458-1115 / FAX: Tokyo +81 (0)3 3458-1163

<https://www.kato-works.co.jp>

QUALITY & EXPERIENCE  
SINCE 1895

C06181  
08.2025-500(FB) 1

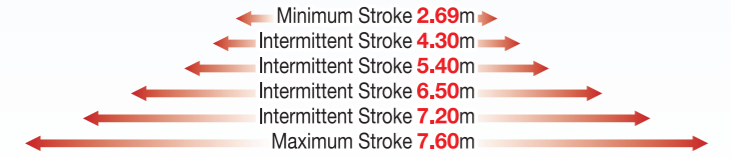
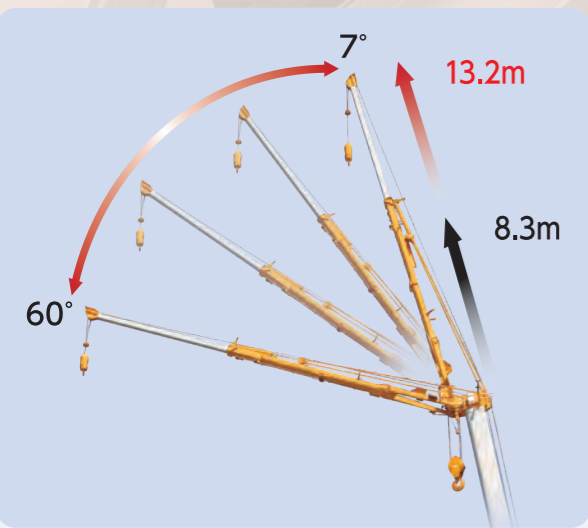
# Powerful & Reliable 6 section SUPERBOOM and 2 section SL jib

- ◆ Boom lifting capacity SUPERBOOM**
- Boom type..... 6-section round shaped full power boom
  - Maximum lifting capacity..... **80t x 1.7m**
  - Boom length..... **10.0m ~ 44.5m**
  - Maximum lifting height..... **45.5m**
- ◆ Jib lifting capacity**
- Jib type..... 2-section hydraulic luffing power jib
  - Maximum lifting capacity..... **4t x 75°**
  - Jib length..... **8.3m ~ 13.2m**
  - Maximum lifting height..... **58.6m**
  - Jib offset angle..... **7° ~ 60°**

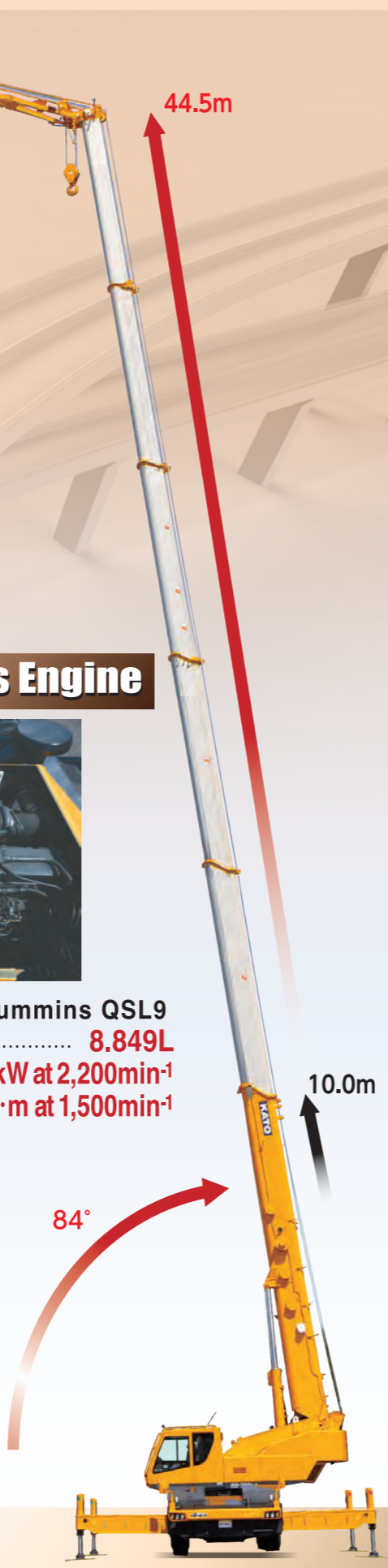
## Powerful Cummins Engine



- Model..... **Cummins QSL9**
- Piston displacement..... **8.849L**
- Maximum Output..... **242kW at 2,200min<sup>-1</sup>**
- Maximum Torque..... **1,250N·m at 1,500min<sup>-1</sup>**



## Outrigger Width



# Comfortable operator's cabin



**7-inch Monitor**

- A 7-inch monitor is installed when either the right-side view camera, rear-view camera, winch view camera, or a combination of these is installed.

**Liquid crystal display cluster meter**  
(At view while traveling)  
(Driving mode)

## Touch screen control ACS moment limiter

A range of limiting functions to increase Safety during Operation.

**Load factor limit**

- It limits the load factor to 80% ~ 100% of the rated lifting capacity and keep a safe margin.

**Working range limit**

- It limits the 2 vertical surface range and avoid collision.

