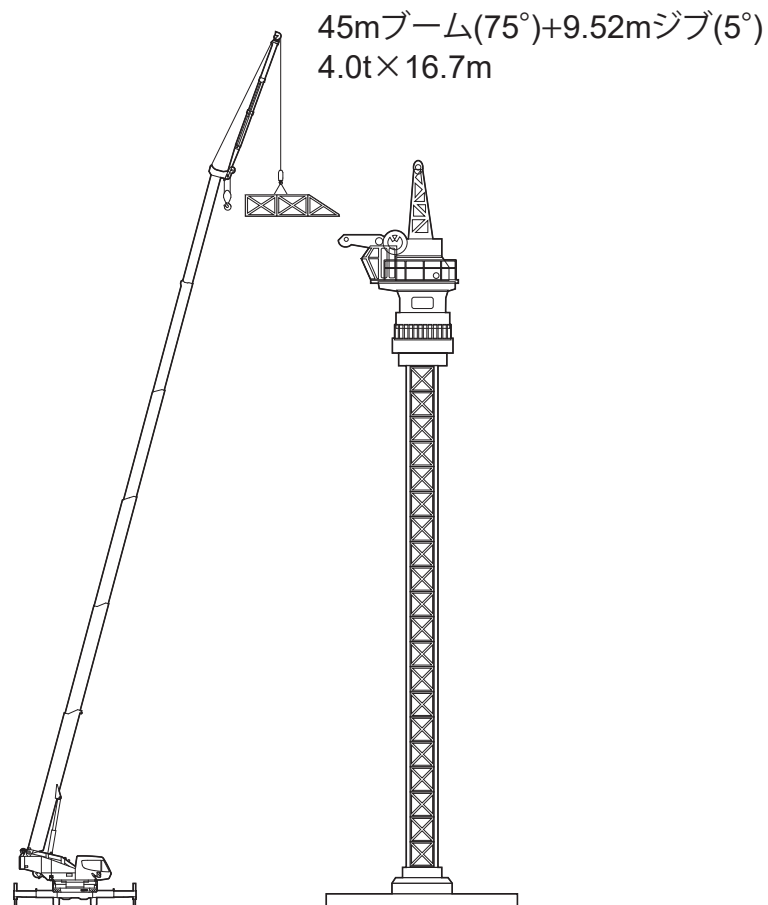
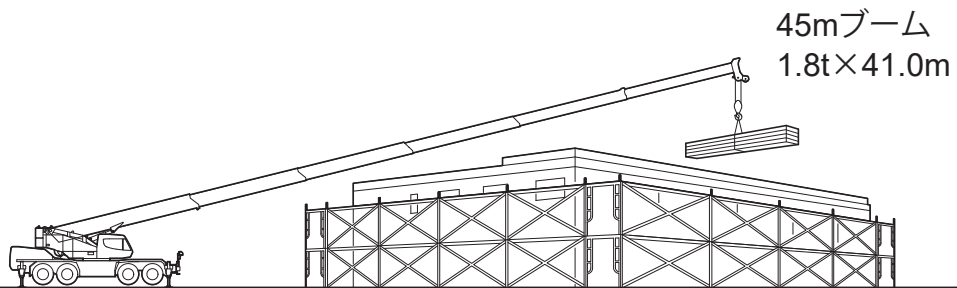
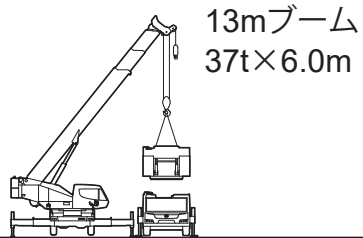
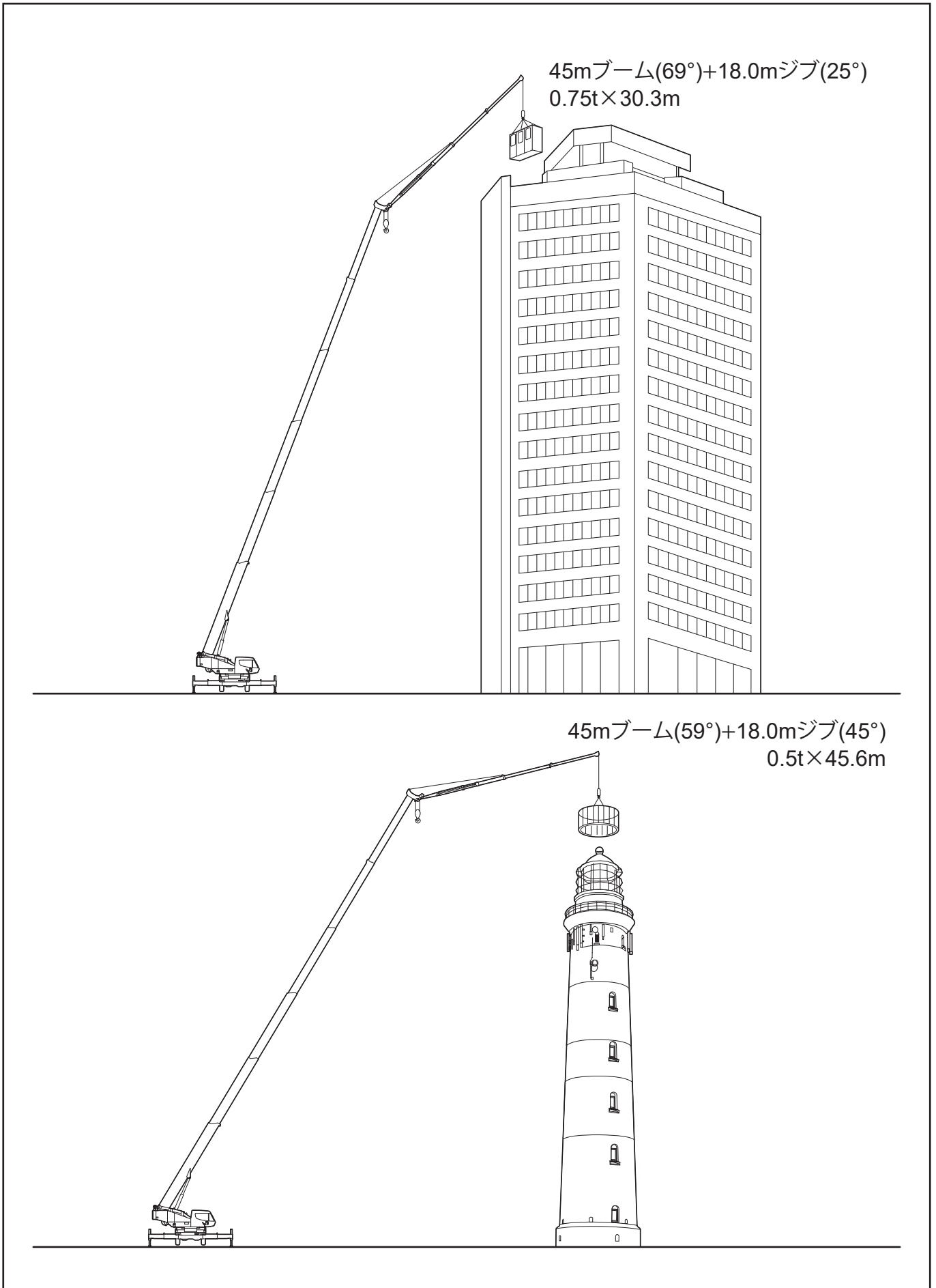


# 作業概念図

■ 作業概念図

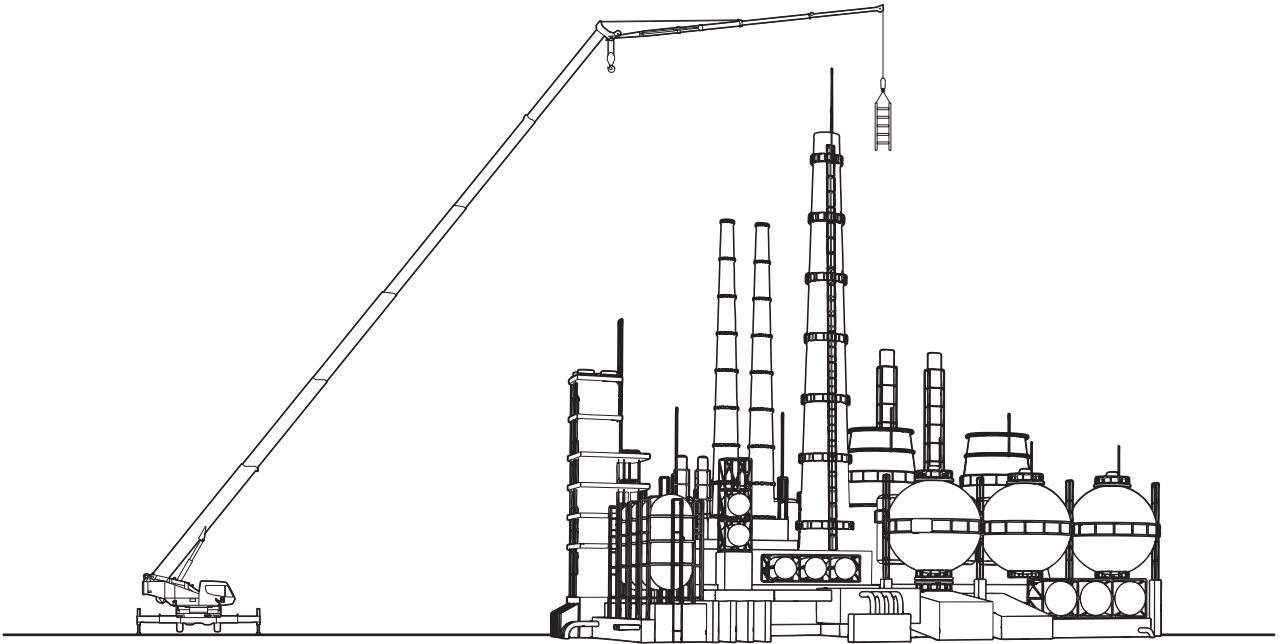


■作業概念図

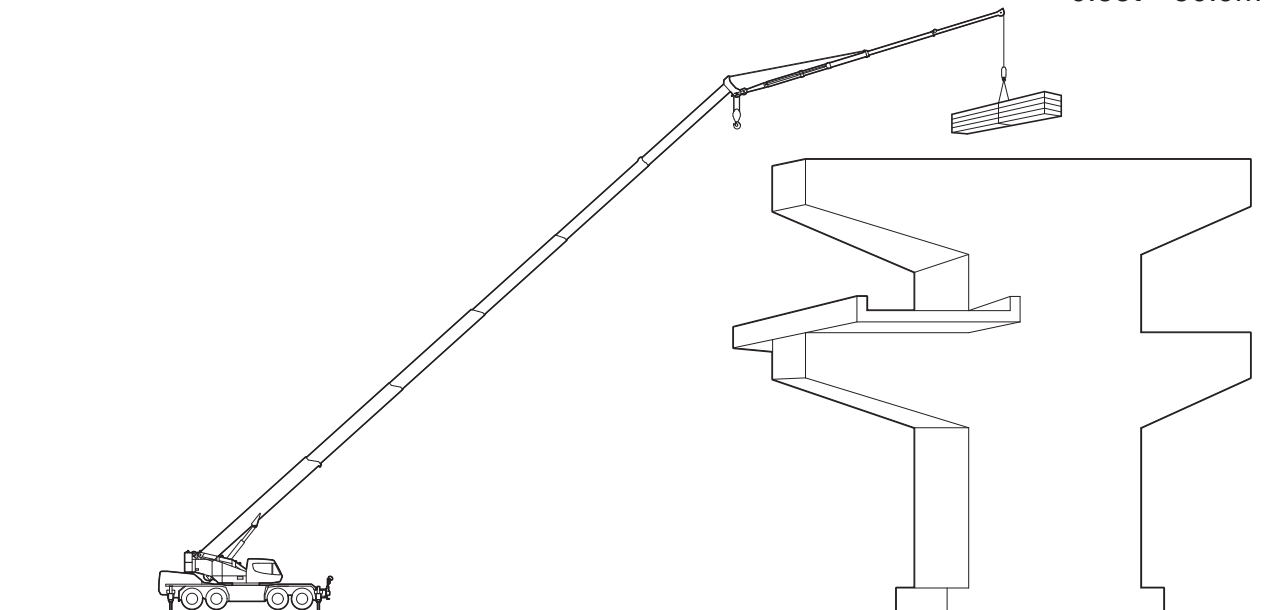


■ ジブ作業概念図

45mブーム(51°)+18.0mジブ(45°)  
0.5t×45.6m

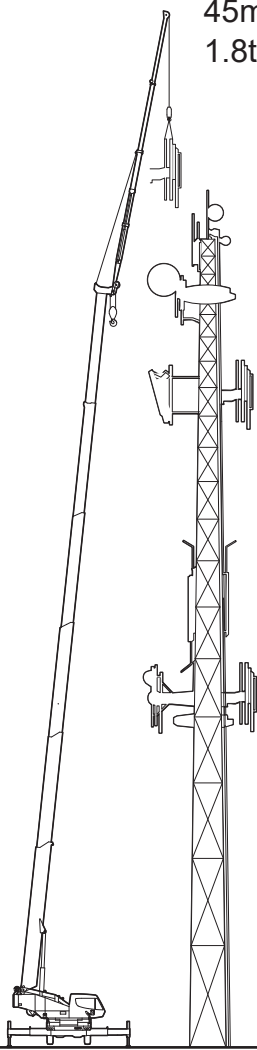


45mブーム(42°)+18.0mジブ(25°)  
0.55t×50.9m



■ジブ作業概念図

45mブーム(84°)+18.0mジブ(5°)  
1.8t×8.5m



45mブーム(32°)+18.0mジブ(25°)  
0.4t×55.1m

